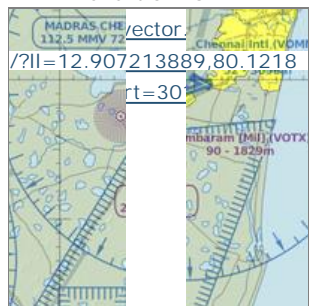


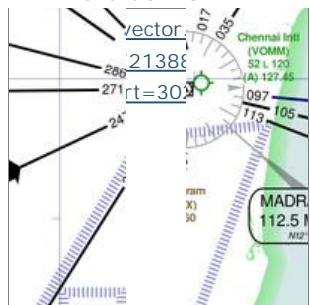
# VOTX Tambaram Airport

ARINC Data Effective 2013-12-12 0901Z

VFR Chart of VOTX



IFR Chart of VOTX



Satellite View of VOTX



<http://maps.google.com/maps?ll=12.907213889,80.121861111&t=h&z=16>

Advertisement

## Location Information for VOTX

Coordinates: N12°54.43' / E80°7.31'  
 View all [Airports in Tamil Nadu, India](/airports/India/Tamil%20Nadu).  
 Elevation is 90.0 feet MSL.  
 Magnetic Variation is 1° West

## Operations Data

Airport Use: Military

## Nearby Navigation Aids

ID	Name	Freq	Radial / Range	ID	Name	Freq
<b>MMV</b>	MADRAS CHENNAI	112.50	203° 5.2	<b>MA</b>	MADRAS	228
<b>KKP</b>	KANCHEEPURAM	115.40	074° 25.0	<b>AS</b>	MADRAS	211
<b>TTP</b>	TIRUPATI	115.70	144° 54.4	<b>TP</b>	TIRUPATI	333
<b>BIB</b>	BANGALORE	114.50	104° 132.5	<b>OM</b>	PONDICHERRY	385

## Runway 12/30

Dimensions: 5965 x 150 feet / 1818 x 46 meters  
 Surface: Hard

Runway 12	Runway 30
Coordinates: N12°54.60' / E80°7.01'	N12°54.12' / E80°7.89'
Elevation: 90	90
Runway Heading: 121°	301°

## Runway 05/23

Dimensions: 4965 x 150 feet / 1513 x 46 meters  
 Surface: Unknown

Runway 05	Runway 23
Coordinates: N12°54.03' / E80°6.93'	N12°54.63' / E80°7.50'
Elevation: 90	90
Runway Heading: 045°	225°

## Nearby Airports with Instrument Procedures

ID	Name	Heading / Distance
<b>VOMM</b> ( <a href="/airport/VOMM/Chennai-International-Airport">/airport/VOMM/Chennai-International-Airport</a> )	<a href="/airport/VOMM/Chennai-International-Airport">Chennai International Airport</a>	032° 6.1
<b>VOTP</b> ( <a href="/airport/VOTP/Tirupati-Airport">/airport/VOTP/Tirupati-Airport</a> )	<a href="/airport/VOTP/Tirupati-Airport">Tirupati Airport</a>	323° 55.1
<b>VOBL</b> ( <a href="/airport/VOBL/Bangalore-Devenahalli-International-Airport">/airport/VOBL/Bangalore-Devenahalli-International-Airport</a> )	<a href="/airport/VOBL/Bangalore-Devenahalli-International-Airport">Bangalore Devenahalli International Airport</a>	279° 142.6
<b>VOBG</b> ( <a href="/airport/VOBG/Hal-Airport-Bangalore-Airport">/airport/VOBG/Hal-Airport-Bangalore-Airport</a> )	<a href="/airport/VOBG/Hal-Airport-Bangalore-Airport">Hal Airport Bangalore Airport</a>	273° 144.0