

ORANJESTAD, ARUBA

ILS/DME RWY 11

LOC IBE 108.7
Chan 24
APCH CRS 110°
Rwy Idg 9000
TDZE 9
Arpt Elev 60

[USN] AL-2689 (DCA)

REINA BEATRIX INTL (TNCA)

▼ ** When ALS Inop, increase vis CAT AB 400m.
*** When ALS Inop, increase vis 400m.



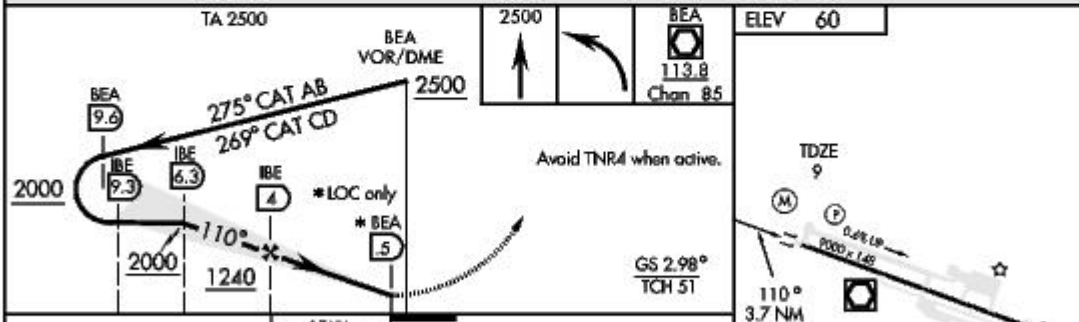
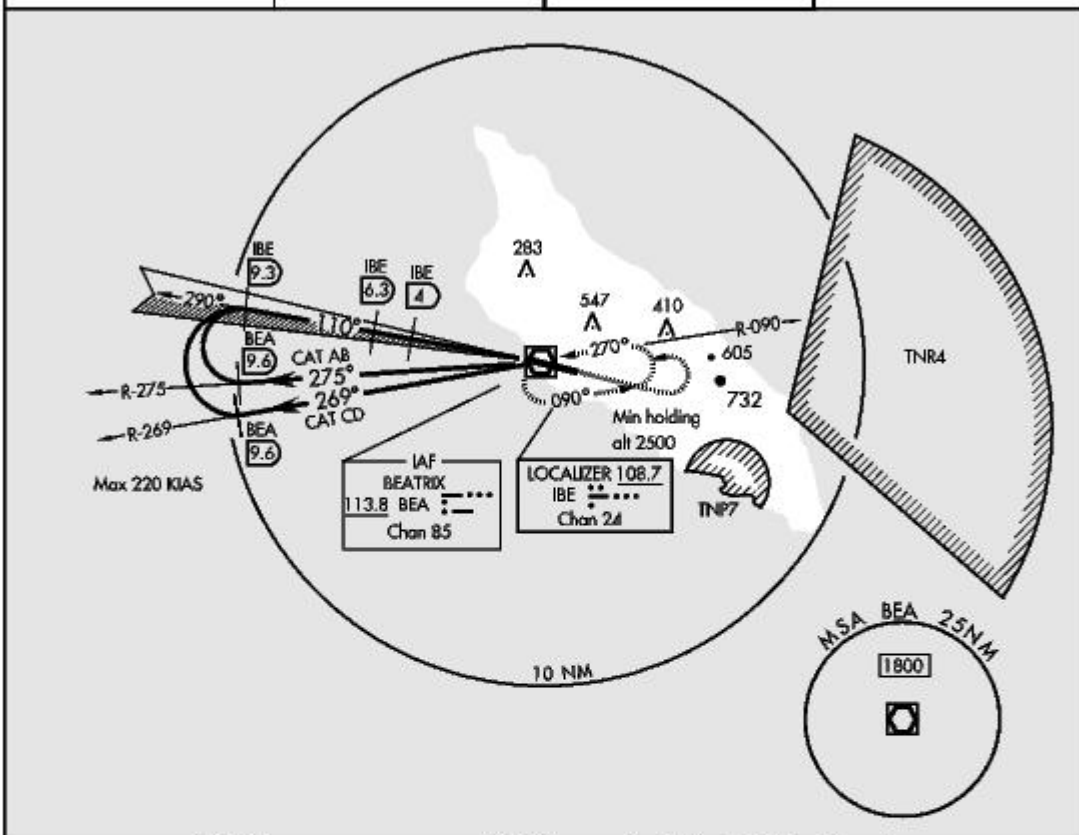
MISSED APPROACH: Climb straight ahead to 2500 then left to BEA VOR/DME and hold.

ATIS 132.1

BEATRIX APP CON 120.9

BEATRIX TOWER 120.9

GND CON 121.9



CATEGORY	A	B	C	D
S-ILS 11 **	209 - 800m 200 (200-800m)		209 - 1200m 200 (200-1200m)	
S-LOC 11 ***	340 - 1200m		331 (300 - 1200m)	
CIRCLING	860-1600m 800 (800-1600m)	860-2000m 800 (800-2000m)	1140 - 4800m 1080 (1100-4800m)	

ORANJESTAD, ARUBA
03023

12°30'N-70°01'W

REINA BEATRIX INTL (TNCA)

ILS/DME RWY 11

Effective 2 OCT 2003 - 30 OCT 2003

ORANJESTAD, ARUBA

VOR/DME RWY 11

VOR/DME BEA
113.8
Chan 85

APCH CRS
113°

Rwy ldg 9000
TDZE 9
Arpt Elev 60

[USN] AL-2689 (DCA)

REINA BEATRIX INTL (TNCA)

▼ * When ALS inop, increase vis 400m.



MISSED APPROACH: Climb straight ahead to 2500 then left to BEA VOR/DME and hold.

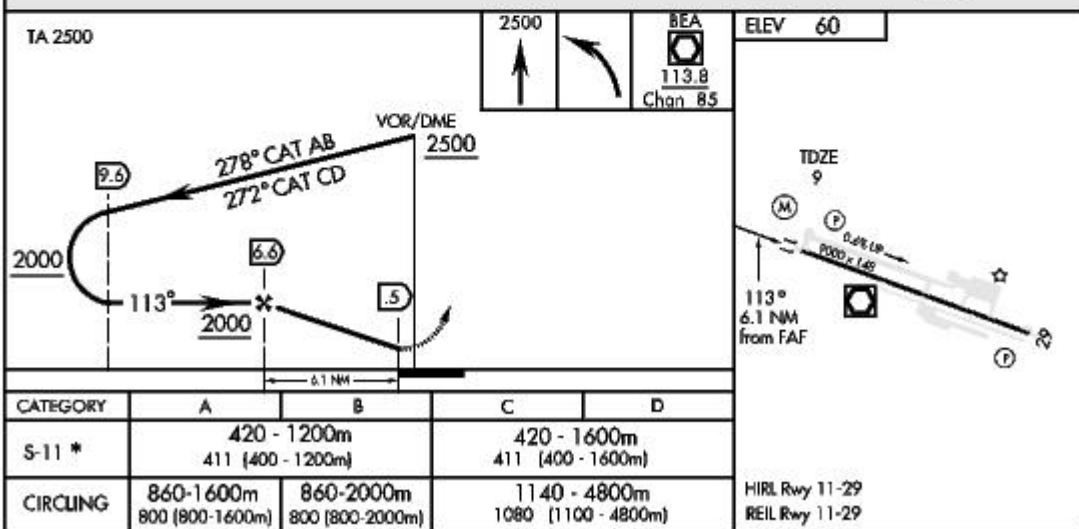
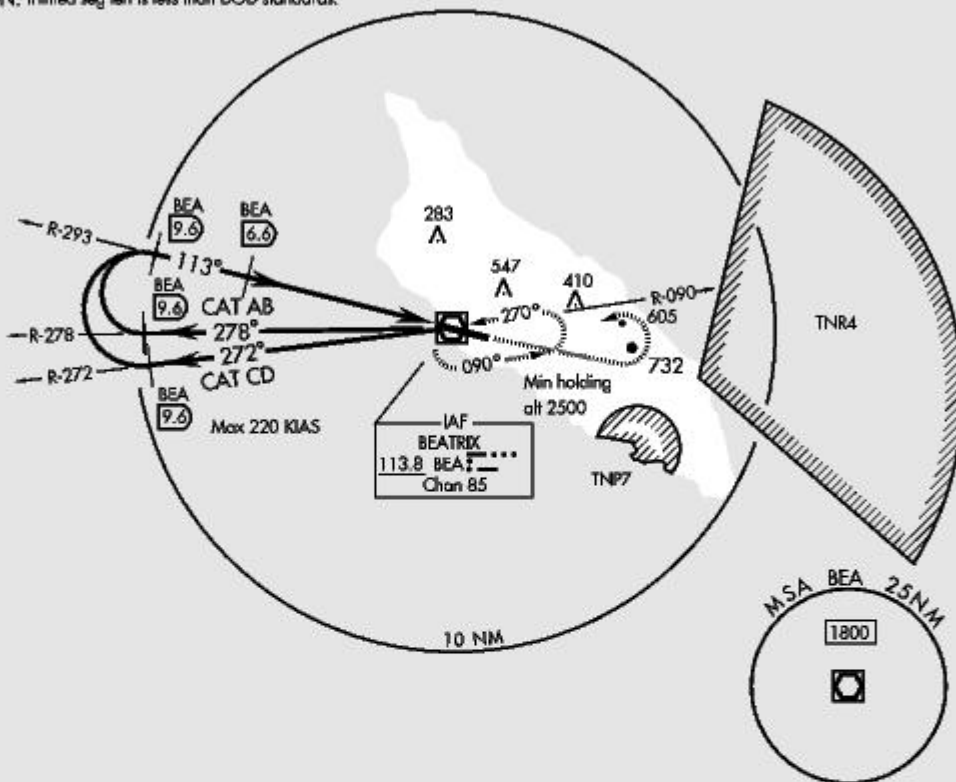
ATIS
132.1

BEATRIX APP CON
120.9

BEATRIX TOWER
120.9

GND CON
121.9

CAUTION: Inimed seg len is less than DOD standards.



ORANJESTAD, ARUBA
03023

12°30'N-70°01'W

REINA BEATRIX INTL (TNCA)

VOR/DME RWY 11

Effective 2 OCT 2003 - 30 OCT 2003

ORANJESTAD, ARUBA

VOR/DME RWY 29

VOR/DME BEA
113.8
 Chan **85**

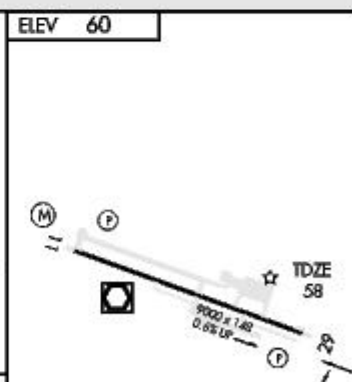
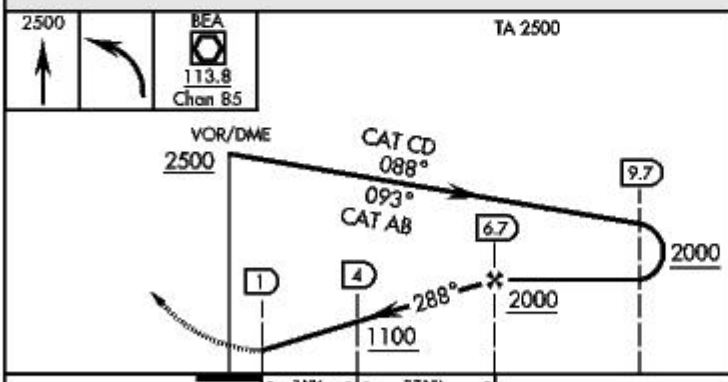
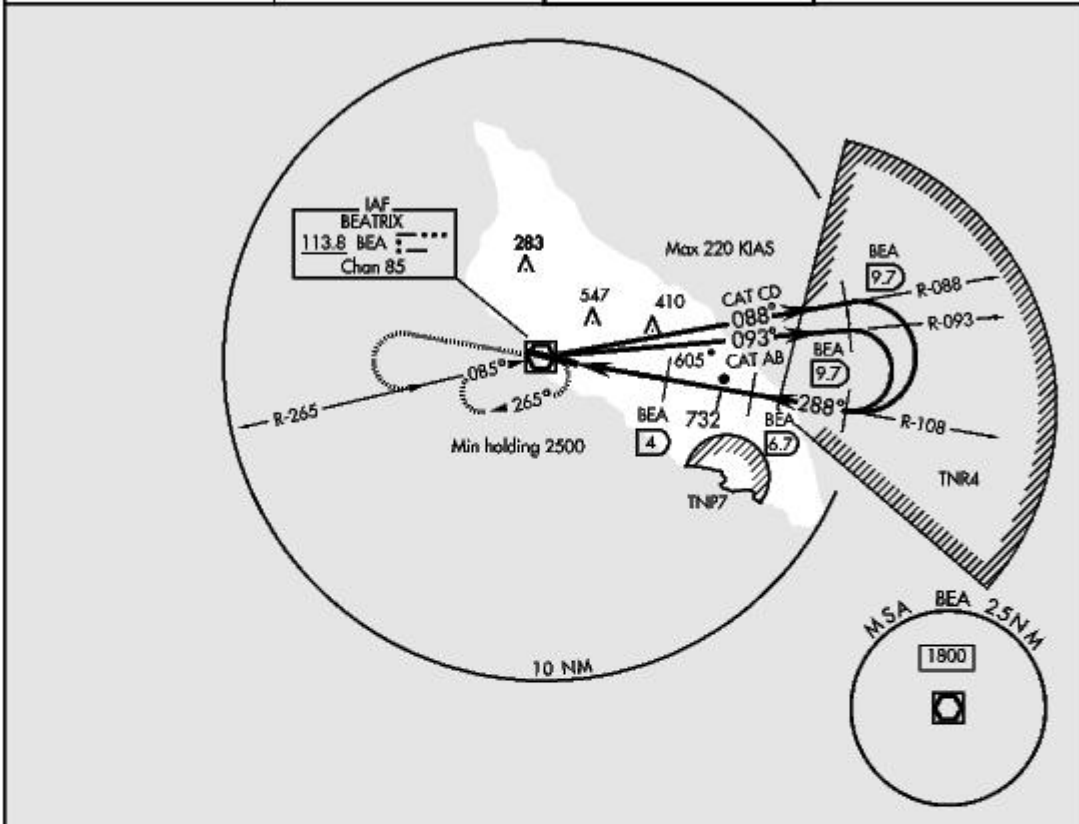
APCH CRS
288°

Rwy Idg **9000**
 TDZE **58**
 Arpt Elev **60**

[USN] AL-2689 (DCA) REINA BEATRIX INTL (TNCA)

MISSED APPROACH: Climb straight ahead to 2500 then left to BEA VOR/DME and hold.

ATIS **132.1** BEATRIX APP CON **120.9** BEATRIX TOWER **120.9** GND CON **121.9**



CATEGORY	A	B	C	D
S-29	660 - 1600m 602 (600-1600m)	660 - 2000m	660-2800m 602(600-2800m)	660-3200m 602(600-3200m)
CIRCLING	860 - 1600m 800(800-1600m)	860-2000m 800(800-2000m)	1140 - 4800m 1080 (1100 - 4800m)	

HIRL Rwy 11-29
 REIL Rwy 11-29

ORANJESTAD, ARUBA
 03023

12°30'N-70°01'W

REINA BEATRIX INTL (TNCA)

VOR/DME RWY 29

Effective 2 OCT 2003 - 30 OCT 2003

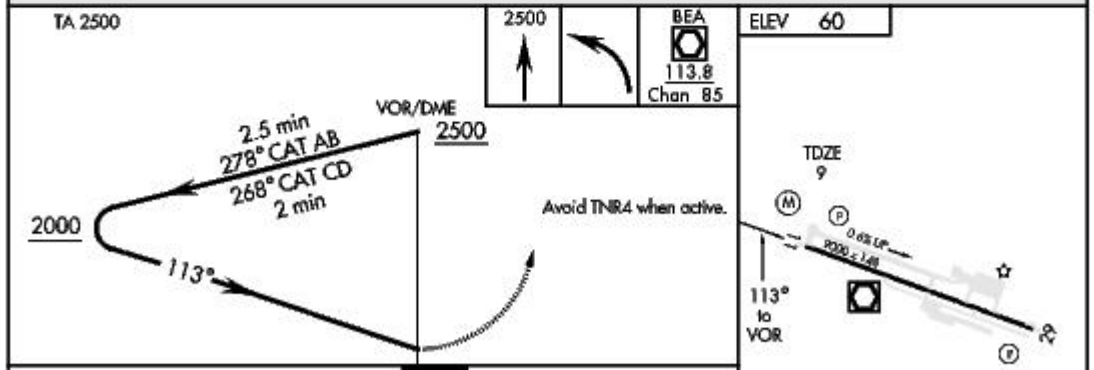
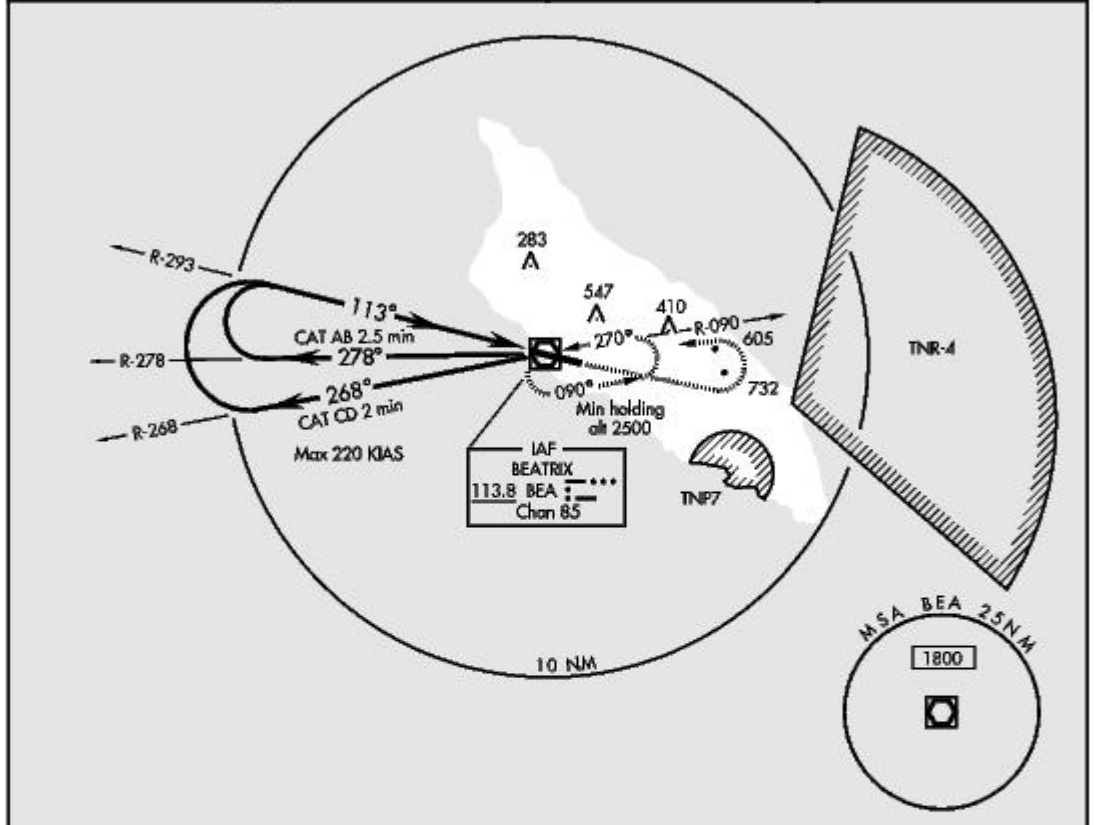
ORANJESTAD, ARUBA

VOR RWY 11

VOR/DME BEA 113.8 Chan 85	APCH CRS 113°	Rwy ldg TDZE Arpt Elev 9000 9 60	[USN] AL-2689 (DCA)	REINA BEATRIX INTL (TNCA)
---	-------------------------	--	---------------------	---------------------------

▽ * When ALS inop, increase vis 400m. M MISSED APPROACH: Climb straight ahead to 2500 then left to BEA VOR/DME and hold.

ATIS 132.1	BEATRIX APP CON 120.9	BEATRIX TOWER 120.9	GND CON 121.9
----------------------	---------------------------------	-------------------------------	-------------------------



CATEGORY	A	B	C	D
S-11 *	440 1200m 431 (400 - 1200m)		440-1600m 431 (400-1600m)	440-2000m 431 (400-2000m)
CIRCLING	860-1600m 800 (800-1600m)	860-2000m 800 (800-2000m)	1140 - 4800m 1080 (1100 - 4800m)	

ORANJESTAD, ARUBA 12°30'N-70°01'W REINA BEATRIX INTL (TNCA)

Effective 2 OCT 2003 - 30 OCT 2003

ORANJESTAD, ARUBA

VOR RWY 29

VOR/DME BEA
113.8
 Chan 85

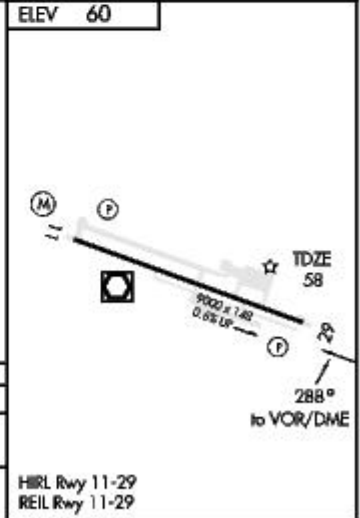
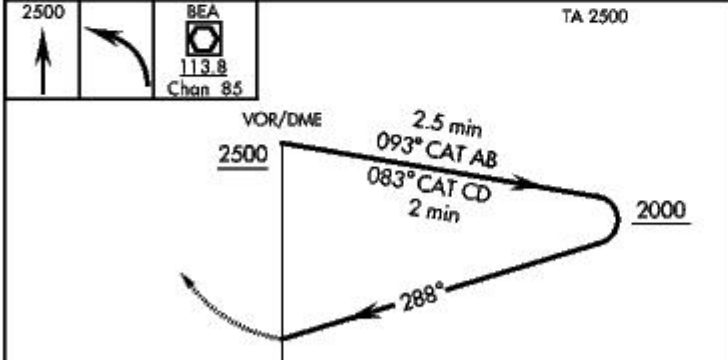
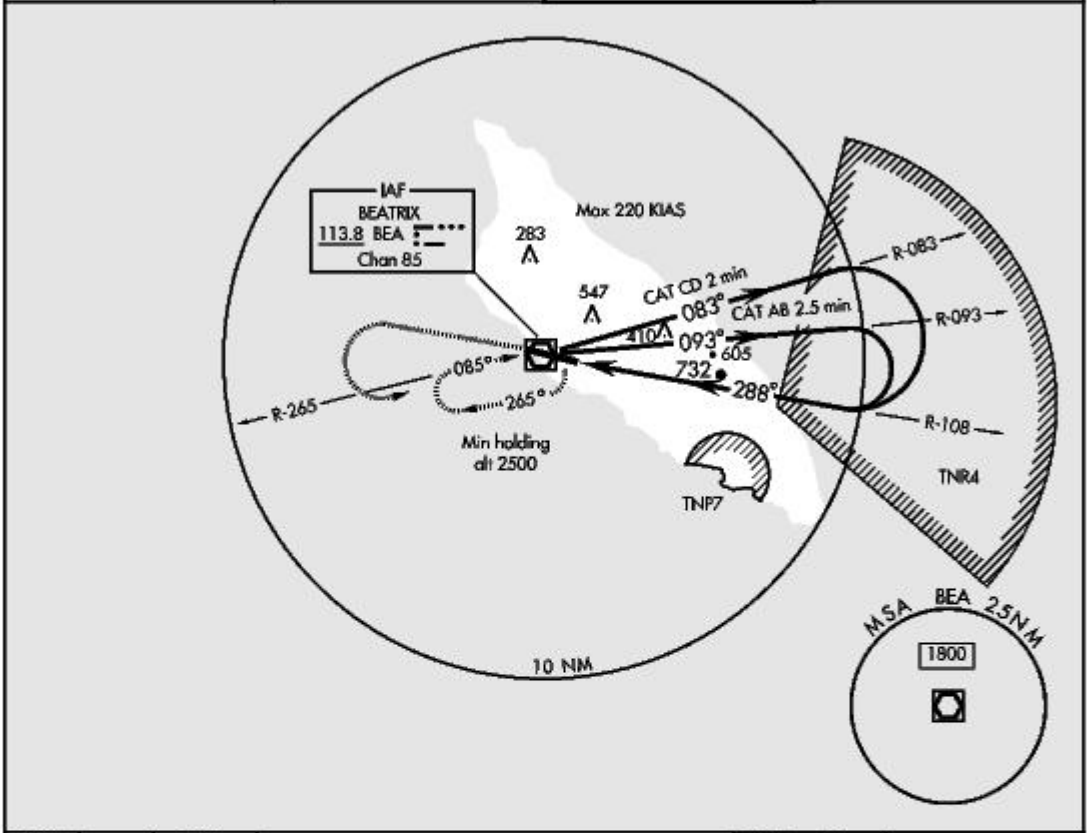
APCH CRS
288°

Rwy Idg **9000**
 TDZE **58**
 Arpt Elev **60**

[USN] AL-2689 (DCA)

REINA BEATRIX INTL (TNCA)

<p>▼</p> <p>MISSED APPROACH: Climb straight ahead to 2500 then left to BEA VOR/DME and hold.</p>			
<p>ATIS 132.1</p>	<p>BEATRIX APP CON 120.9</p>	<p>BEATRIX TOWER 120.9</p>	<p>GND CON 121.9</p>



CATEGORY	A	B	C	D
S-29	1040-2000m 982 (1000-2000m)	1040-2400m 982 (1000-2400m)	1040 - 4800m 982 (1000 - 4800m)	
CIRCLING	1040-2000m 980 (1000-2000m)	1040-2400m 980 (1000-2400m)	1140 - 4800m 1080 (1100 - 4800m)	

ORANJESTAD, ARUBA
 03023

12°30'N-70°01'W

REINA BEATRIX INTL (TNCA)

VOR RWY 29

Effective 2 OCT 2003 - 30 OCT 2003