

AERODROMES FOR USE BY INTERNATIONAL COMMERCIAL AIR TRANSPORT — LAND		
2	Ref point: Lat 01°22.70'N Long 173°09.00'E Site: Centre of runway	1 CITY/Aerodrome: TARAWA/Bonriki International
3	Distance and direction from city: 2NM north of Bikenibeu	14 Restaurant accommodation: At hotel and motels
4	Elevation: 9ft	15 Medical facilities: Available
5	Aerodrome reference temperature: 28°C-29°C	16 Transportation available: Taxis, buses, rental cars
6	Magnetic variation: 10°16'E (Jan 1993) annual change -0'58"	17 Cargo handling facilities: Very limited
7	Transition altitude: 11 000ft	18 Fuel grades: 100/130, Jet A1
8	Operational hours: 2000-0430 Mon-Fri 2000-0015 Sat Other times 24hr PN	19 Oil grades: Nil
9	Aerodrome operator or administrative authority: Director of Civil Aviation KIRIBATI	20 Oxygen and related servicing: Nil
10	Postal address: Director of Civil Aviation PO Box 487 Betio, Tarawa REPUBLIC OF KIRIBATI	21 Refuelling facilities and limitations: Hydrant dispenser. Requests for fuel to BP representative, Bonriki Airport
11	Telegraphic addresses: (AFTN): NGTAYAYX (TELEX): KI 77022 (Commercial): Aviation Betio, Tarawa	22 Hangar space available for visiting aircraft: Nil
12	Telephone number: (686) 28092 Facsimile number: (686) 28280	23 Repair facilities normally available: Limited
13	Overnight accommodation: Hotel (40 rooms) Motels	24 Rescue and fire protection: 68kg dry chemical unit
		25 Seasonal availability: All seasons
		26 Local flying restrictions: Daylight operations only
		27 Pre-flight altimeter check locations and elevations: RWY 09 threshold, elevation 9ft RWY 27 threshold, elevation 9ft

28 METEOROLOGICAL DATA													
Mean daily maximum and minimum temperatures (°C)													
Month	Jan	Feb	Mar	Apr	May	Jun	Jul	Aug	Sep	Oct	Nov	Dec	
Maximum	30.8	30.8	30.7	30.9	31.2	31.2	31.1	31.1	31.3	31.4	31.4	31.2	
Minimum	25.4	25.4	25.4	25.4	25.7	25.5	25.3	25.4	25.4	25.6	25.4	25.4	
Mean pressure in hectoPascals (hPa) at approximately the times of maximum and minimum temperature													
Maximum	1007	1007	1007	1008	1008	1008	1008	1008	1008	1008	1007	1006	
Minimum	1007	1007	1008	1008	1008	1009	1009	1009	1009	1009	1008	1007	
Mean absolute humidity in grams per cubic metre (gm/m³) at approximately the times of maximum and minimum temperature													
Maximum	22.7	22.7	23.0	23.4	23.4	22.8	22.1	22.0	21.7	21.5	22.2	22.4	
Minimum	21.3	21.2	21.4	21.8	21.7	21.4	21.0	20.9	20.9	20.4	20.8	21.4	
29 SLOPES: Longitudinal profiles of runways, stopways and clearways													
<p>The diagram illustrates the longitudinal profiles of RWY 09 and RWY 271, along with their associated stopways (SWY) and clearways (CWY). The profiles are shown relative to ELEVATIONS AMSL. RWY 09 has a 0.00% slope. Key elevation points are marked at 2161m, 2071m, 2011m, 0m, 2011m, 2071m, and 2161m. Vertical dashed lines indicate 9m high structures at various points. Arrows indicate the direction of the runways and clearways.</p>													

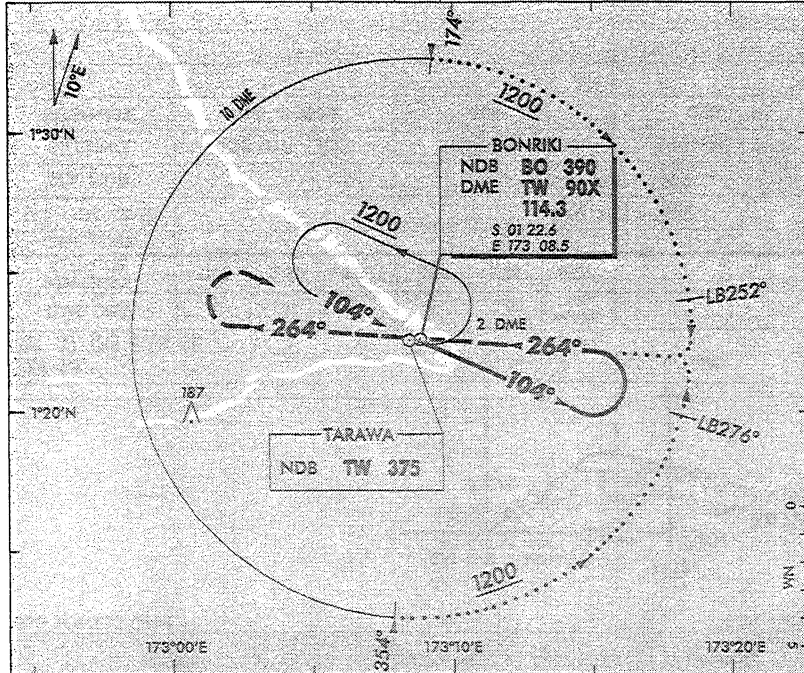
30 PHYSICAL CHARACTERISTICS									
RUNWAY			DIMENSIONS (METRES)				STRENGTH	SURFACE	
Designation	True Brg	Type	Runway	Stopway	Clearway	Strip	Runway	Runway	Stopway
09	098°	NPA	2011x45	60x45	60x150	2221x150*	PCN40/F/B/X/T	B	B
27	278°	NPA	2011x45	60x45	150x150	2221x150*	PCN40/F/B/X/T	B	B
*Power transformer 16ft AMSL obstructs strip on northern side approx 400m from eastern threshold at 62m from runway centreline.									
31 MOVEMENT AREAS									
Aprons:			Dimensions: 130x70		Taxiways:		Width: 23m		
			Surface: Bitumen				Surface: Bitumen		
			Strength: PCN25/F/B/X/T				Strength: PCN25/F/B/X/T		
VISUAL GROUND AIDS									
32	Taxiing guidance system: Sign boards: Nil								
33	Visual aids to location: Nil								
34	Indicators and ground signalling devices: WDI (not lighted)								
35	<p>LIGHTING AIDS</p> <p>Approach lighting:</p> <p>RWY 09 High intensity uni-directional white with one cross bar space at 30m intervals extending 210m from THR. Low intensity omni-directional red extending 410m from THR</p> <p>RWY 27 Nil</p> <p>RWY 09 PAPI 3.00 TCH 50ft</p> <p>Other lighting:</p> <p>Taxiways edge blue</p> <p>Apron areas floodlit</p> <p>Note: Due non remoting of lighting at FSS Cab delays may be experienced in changing intensities of all lighting.</p> <p>Runway lighting:</p> <p>RWY 09/27 Edge omni high intensity white.</p> <p>RWY 09 Threshold and wing bars uni-directional green</p> <p>RWY 27 Wing bars uni-directional green</p>								
36	Emergency lighting and secondary power supply: No standby power available. Battery operated portable lamps available to light up to 800m of runway.								
37	Obstacle marking and lighting: Apron flood light towers obstruction lit.								
38	MARKING AIDS Runway designation, threshold, centre line, edge								

39 EFFECTIVE OPERATIONAL LENGTHS						
RWY	TODA			TORA	ASDA	LDA
	m			m	m	m
	1:62.5	1:50	1:40			
09	2071	2071	2071	2011	2071	2011
27	2161	2161	2161	2011	2071	1931
40	ICAO Type C chart information not provided					
41	Not applicable					
42	DISABLED AIRCRAFT REMOVAL					
	Capability: Information not available					
43	Standard taxiing routes not established					

NZMS 255B
CHART TW3

By authority of the Director of Civil Aviation, Republic of Kiribati.

REPUBLIC OF KIRIBATI
NDB or NDB/DME Rwy 27
TARAWA/BONRIKI INTL



FLIGHT SERVICE STATION
BONRIKI FLIGHT SERVICE
118.1 118.5

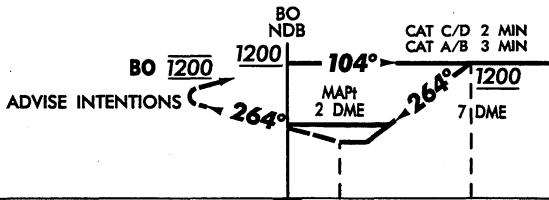
HOLDING BO 390

2.5NM MSA BO NDB

1200

USE BONRIKI QNH

FOR INTERPRETATION SEE SYMBOLS



ELEV 9ft
RWY 27 THR ELEV 9ft

0 2 4 6 8 10 DME

DME DIST	MAP 2	3	4	5	6	7	
ADVISORY ALTITUDE	MDA	520	690	860	1030	1200	
CATEGORY		A		B		C	D
STA NDB /DME		370 (361) - 1500					
STA NDB		410 (401) - 1500					
CIRCLING		420 (411) - 1900		510 (501) - 2800		600 (591) - 3700	
ALTERNATE		800 - 4000		800 - 5		800 - 6	

CHANGES: TV NDB POSN. ALTERNATE MINIMA, EDITORIAL.

SPFG
16 SEP 93

NDB or NDB/DME Rwy 27
TARAWA/BONRIKI INTL
REPUBLIC OF KIRIBATI

CAA

REPUBLIC OF KIRIBATI

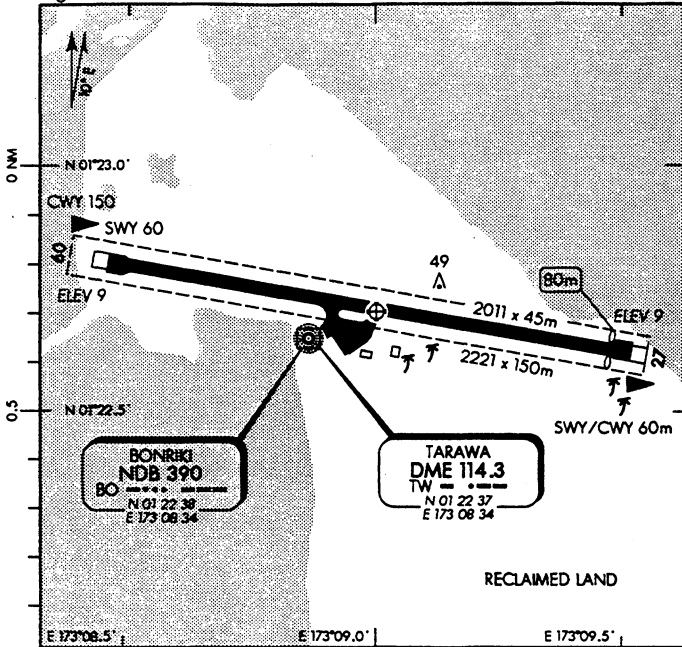
ELEVATION 9

TARAWA/BONRIKI INTL

NGTA

Flight Service: 118.1 118.5

By authority of the Director of Civil Aviation, Republic of Kiribati



OPERATIONAL DATA

RWY	Gp	SFC	Strength	Slope	EOL		
					TOD	LDG	
					1:40	1:30	DIST
09		B	PCN 40/P/B/X/T		2071	2011	
27		B			2161	1931	

VFR MINIMA

CEILING (ft) and VISIBILITY (m or km)		
	DAY	NIGHT
AIR TRANSPORT		
ALL OTHER		
NIGHT TRAINING		

BONRIKI NDB 390
BO
N 01 22 38
E 173 08 34

TARAWA DME 114.3
TW
N 01 22 37
E 173 08 34

RECLAIMED LAND

GOVERNMENT CIVIL AERODROME: EASTERN END OF TARAWA ATOLL

© Airways Corporation of NZ Ltd

1. Power transformer 16ft AMSL obstructs strip on northern side approx 400m from eastern threshold at 62m from runway centreline

LIGHTING

No standby power available
Battery operated portable lamps available to light up to 800m of runway

FACILITIES

Customs
Immigration
Passenger
Repairs: Limited

Fuel: By request to BP Representative, Bonriki Airport

CIVIL IFR TAKE-OFF MINIMA

CEILING (ft) and VISIBILITY (m or km)		
RWY	DAY	NIGHT
09	400-1500	NA
27	400-1500	NA

Changes from 16 SEP 93: Runway widened

TARAWA

Published 29 FEB 96
Effective 28 MAR 96