

KSEZ Sedona Airport

Sedona, Arizona, USA



GOING TO SEDONA?



Reserve a
Hotel Room

enterprise
Reserve Online

FAA INFORMATION EFFECTIVE 24 JULY 2014

[Loc](#) | [Ops](#) | [Rwys](#) | [IFR](#) | [FBO](#) | [Links](#)
[Com](#) | [Nav](#) | [Svcs](#) | [Stats](#) | [Notes](#)

Location

FAA Identifier: SEZ

Lat/Long: 34-50-54.9000N / 111-47-18.4000W
34-50.915000N / 111-47.306667W
34.8485833 / -111.7884444
(estimated)

Elevation: 4830 ft. / 1472.2 m (surveyed)

Variation: 13E (1985)

From city: 2 miles SW of SEDONA, AZ

Time zone: UTC -7 (year round; does not observe DST)

Zip code: 86336

Airport Operations

Airport use: Open to the public

Activation date: 05/1956

Sectional chart: [PHOENIX](#)

Control tower: no

ARTCC: ALBUQUERQUE CENTER

FSS: PRESCOTT FLIGHT SERVICE STATION

NOTAMs facility: SEZ (NOTAM-D service available)

Attendance: MAY-SEP 0700-1800, OCT-APR 0800-1700

Pattern altitude: TPA FOR PROPELLER ACFT 1173 AGL, JET ACFT 2173 AGL.

Wind indicator: lighted

Segmented circle: yes

Lights: ACTVT MIRL RY 03/21, REIL RY 03 & RY 21 - CTAF. PAPI RY 03 RY 21 OPER CONT.

Beacon: white-green (lighted land airport)

Operates sunset to sunrise.

Airport Communications

CTAF/UNICOM: 123.0

WX AWOS-2: 118.525 (928-282-1993)

PHOENIX APPROACH: 126.375

PHOENIX DEPARTURE: 126.375

WX ASOS at FLG (18 nm N): PHONE 928-779-2439

- APCH/DEP SVC PRVDD BY PHOENIX ATCT-TRACON ON FREQ 126.375 0545-2215L; APCH/DEP SVC PRVDD BY ALBUQUERQUE ARTCC ON FREQS 124.5/306.2 (WINSLOW RCAG) 2215-0545L.
- MINGUS MOUNTAIN RCO 122.3 (PRESCOTT RADIO)

Nearby radio navigation aids

Fuel Prices in Your Pocket

AirNav
FBO
iPhone App

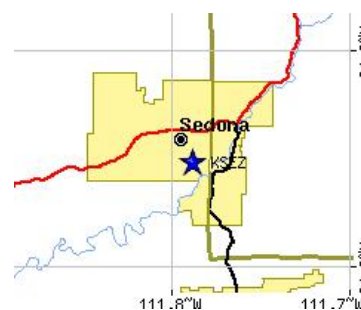
- Save searches for in-flight/offline use
- Write comments and update prices on the spot
- Confirm fuel prices when you pay

Download the **FREE** iPhone App from AirNav [CLICK HERE](#)

Leave your AirBoss card at home? Use the App!

Click below to watch the video

YouTube



Road maps at: [MapQuest](#) [Bing](#)
[Google](#) [Yahoo!](#)

Aerial photo

WARNING: Photo may not be current or correct



Photo by Adar Lotan
Photo taken 05-Mar-2013
from 7,500 ft AGL, looking north.

VOR radial/distance	VOR name	Freq	Var
FLG r183/18.8	FLAGSTAFF VOR/DME	113.85	14E
DRK r062/35.2	DRAKE VORTAC	114.10	14E

Airport Services

Fuel available: 100LL JET-A
 Parking: tiedowns
 Airframe service: MINOR
 Powerplant service: MINOR
 Bottled oxygen: NONE
 Bulk oxygen: NONE

Runway Information

Runway 3/21

Dimensions:	5132 x 100 ft. / 1564 x 30 m	
Surface:	asphalt, in good condition	
Weight bearing capacity:	Single wheel:	15.0
	Double wheel:	30.0
Runway edge lights:	medium intensity	
Operational restrictions:	RY 03 HAS AN UPHILL SLOPE.	
	RUNWAY 3	RUNWAY 21
	Latitude: 34-50.620345N	34-51.210328N
	Longitude: 111-47.674312W	111-46.939343W
	Elevation: 4736.1 ft.	4830.0 ft.
	Gradient: 1.9%	1.9%
	Traffic pattern: left	left
	Runway heading: 032 magnetic, 045 true	212 magnetic, 225 true
	Markings: basic, in good condition	basic, in good condition
	Visual slope indicator: 4-light PAPI on left (3.50 degrees glide path)	4-light PAPI on left (3.50 degrees glide path)
Runway end identifier lights:	yes	yes
Touchdown point:	yes, no lights	yes, no lights

Helipad H1

Dimensions: 50 x 50 ft. / 15 x 15 m
 Surface: concrete
 Runway edge lights: FLD
 Traffic pattern: left left

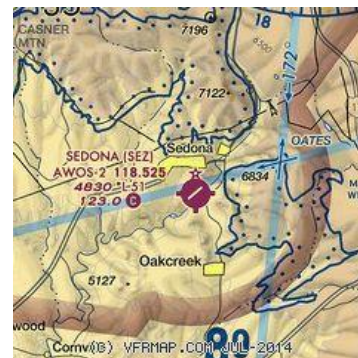
Airport Ownership and Management from official FAA records

Ownership: Publicly-owned
 Owner: YAVAPAI COUNTY
 1015 FAIR ST.
 PRESCOTT, AZ 86305
 Phone 928-282-4487
 Manager: ROD PROPST
 235 AIR TERMINAL DRIVE
 SEDONA, AZ 86336
 Phone 928-282-4487
 EMERGENCY PHONE NUMBER 928-300-3304 (TOM SIMPSON- CELL).

Airport Operational Statistics

Do you have a better or more recent aerial photo of Sedona Airport that you would like to share? If so, please [send us your photo](#).

Sectional chart



Airport distance calculator

Flying to Sedona Airport? Find the distance to fly.

From to KSEZ

[CALCULATE DISTANCE](#)

Sunrise and sunset

Times for 30-Jul-2014

	Local (UTC-7)	Zulu (UTC)
Morning civil twilight	05:09	12:09
Sunrise	05:36	12:36
Sunset	19:31	02:31
Evening civil twilight	19:59	02:59

Current date and time

Zulu (UTC)	30-Jul-2014 18:30:19
Local (UTC-7)	30-Jul-2014 11:30:19

METAR

KSEZ 301815Z AUTO 21008KT
 10SM CLR 34/08 A3019
 RMK AO2
KFLG 301757Z VRB03KT 10SM
 18nm N BKN070 BKN085 25/07
 A3035 RMK AO2 SLP163
 T02500067 10250 20106
 58002 \$

TAF

KSEZ 301720Z 3018/3118
 VRB05KT P6SM FEW100
 FM302000 23009G14KT
 P6SM SCT100 FM310400
 04009KT P6SM FEW100
KFLG 301720Z 3018/3118
 18nm N VRB03KT P6SM BKN070
 FM301900 23010G18KT
 P6SM BKN070 FM310300
 VRB05KT P6SM SCT080

NOTAMs

[Click for the latest NOTAMs](#)

NOTAMs are issued by the DoD/FAA and will open in a separate window not

Aircraft based on the field: 65	Aircraft operations: avg 96/day *	controlled by AirNav.
Single engine airplanes: 58	40% transient general aviation	
Multi engine airplanes: 2	31% air taxi	
Jet airplanes: 1	25% local general aviation	
Helicopters: 2	4% military	
Ultralights: 2	* for 12-month period ending 01 May 2012	

Additional Remarks

A58-21 8 FT FENCE 150 FT FM RY END 125 FT L.
A58-03 5 FT FENCE 150 FT FM RY END 25 FT L.

- ARPT ON 500 FT HIGH MESA.
- RY 03 CALM WIND RY.
- BIRD AND WILDLIFE ON AND INVOF ARPT.
- TURBULENCE MAY BE EXPERIENCED INVOF ARPT.
- NOISE SENSITIVE AREA AVOID SCENIC FLGTS BLO 6500 FT MSL.
- OVERNIGHT TRANSIENT FEE FOR ALL USERS.
- HELICOPTERS OPERATING FM PRIVATE HELIPADS SOUTH & WEST OF RY 03/21.
- NO TGL NOISE SENSITIVE AREA.
- HELI OPNS RESTRICTED TO HELIPADS ADJ TO TWY INTXN A7 SW MAIN TRML BLDG.
- LANDING FEE FOR TUBINE AIRCRAFT WITHOUT FUEL PURCHASE
- WHEN LANDING RY 21, DURING STRONG SW WIND CONDITIONS, STRONG DOWN DRAFTS ARE VERY PROBABLE NE OF APCH END OF RY 21.

Instrument Procedures

NOTE: All procedures below are presented as PDF files. If you need a reader for these files, you should [download](#) the free Adobe Reader.

NOT FOR NAVIGATION. Please procure official charts for flight.
FAA instrument procedures published for use between 24 July 2014 at 0901Z and 21 August 2014 at 0900Z.

IAPs - Instrument Approach Procedures

GPS RWY 03 ****CHANGED**** [download](#)







Departure Procedures (Obstacle)

OATES ONE (RNAV) (OBSTACLE) ****CHANGED**** [download](#)
NOTE: Special Take-Off Minimums/Departure Procedures [download](#) (113KB)
apply

Other nearby airports with instrument procedures:

[KFLG](#) - Flagstaff Pulliam Airport (18 nm N)
[KPRC](#) - Ernest A. Love Field Airport (33 nm W)
[KPAN](#) - Payson Airport (42 nm SE)
[40G](#) - Valle Airport (51 nm N)
[KINW](#) - Winslow-Lindbergh Regional Airport (53 nm E)

FBO, Fuel Providers, and Aircraft Ground Support

Business Name	Contact	Services / Description	Fuel Prices	Comments
 Red Rock Aviation	928-282-1046 [web site] [email]	Aviation fuel, Aircraft parking (ramp or tiedown), GPU / Power cart, Passenger terminal and lounge, Catering, Computerized weather    	 100LL Jet A FS \$5.98 \$6.51 GUARANTEED MEMBERS ONLY Discounts Login Join	★★★★★ 19 read write
More info about Red Rock				

Aviation

Alternatives at nearby airports

IMPORTANT: Note that the FBOs below are NOT at KSEZ but at other nearby airports. Do not expect services from these FBOs to be available at KSEZ.



Located at [KFLG](#)

UNICOM 122.95
 928-779-9585
 toll-free 1-877-947-3326
[\[web site\]](#)
[\[email\]](#)

At [KFLG](#) (Flagstaff Pulliam Airport), 18 miles NNE
 Aviation fuel, Aircraft ground handling, Oxygen service, Aircraft parking (ramp or tiedown), Hangars, GPU / Power cart, Passenger terminal and lounge, ...
[More info and photos of Wiseman Aviation \(KFLG\)](#)

Located at [KFLG](#)



100LL Jet A
 FS \$5.89 \$5.79
 SS \$5.39 \$5.29
[GUARANTEED](#)



21 [read write](#)

FS=[Full service](#)
 SS=[Self service](#)



Where to Stay: Hotels, Motels, Resorts, B&Bs, Campgrounds

The hotels featured here are reported to be very convenient to the Sedona Airport. If your hotel/inn/B&B/resort is near the Sedona Airport, provides convenient transportation, or is otherwise attractive to pilots, flight crews, and airport users, consider listing it here.

Business Name	Contact	Services / Description	Distance	Comments
		no information available		
Sky Ranch Lodge & Motel	928-282-6400	If you are affiliated with Sky Ranch Lodge & Motel and would like to show here your services, contact info, web link, logo, and more, click here	on airport	not yet rated 1 read write



AirNav users who flew into KSEZ have stayed at...

	Miles	Price (\$)
BEST WESTERN PLUS INN OF SEDONA	1.0	151-170
POCO DIABLO RESORT	0.9	168-249
KINGS RANSOM SEDONA HOTEL	1.5	121-140
HILTON SEDONA RESORT & SPA	5.3	189-219
BELL ROCK INN	4.6	139-219
SOUTHWEST INN AT SEDONA	1.8	141-163
BEST WESTERN COTTONWOOD INN	15.0	76-81
AMARA RESORT AND SPA	2.3	169-219
KINGS RANSOM INN	1.5	132-216
SUPER 8 MOTEL SEDONA	1.3	90-100
THE ORCHARDS INN OF SEDONA	2.0	164-165
KOKOPELLI SUITES	1.7	170-171

Hotels in other cities near Sedona Airport

37 in [Sedona](#)
 3 in [Cottonwood](#)
 1 in [Jerome](#)

Other hotels near Sedona Airport

	Miles	Price (\$)
SKY RANCH LODGE	0.3	100-145
A SUNSET CHATEAU	0.6	
VILLAS OF POCO DIABLO	0.9	155-156
BABY QUAIL INN	0.9	85-86
SEDONA SPRINGS RESORT	1.0	125-195
VILLAS OF SEDONA	1.1	195-196
HAMPTON INN SEDONA	1.1	125-139
SEDONA ROUGE HOTEL AND SPA	1.2	209-210
VILLAS AT POCO DIABLO	1.2	

Distances are approximate, and may vary depending on the actual route traveled and the location of the travel start on the airport.

Would you like to see your business listed on this page?

If your business provides an interesting product or service to pilots, flight crews, aircraft, or users of the Sedona Airport, you should consider listing it here. To start the listing process, click on the button below

[ADD YOUR BUSINESS OR SERVICE](#)

Other Pages about Sedona Airport

[airport.sedona.net](#)
[www.swaviator.com/...](#)

[UPDATE, REMOVE OR ADD A LINK](#)

Copyright © AirNav, LLC. All rights reserved.

[Privacy Policy](#) [Contact](#)

SEDONA, ARIZONA

AL-6169 (FAA)

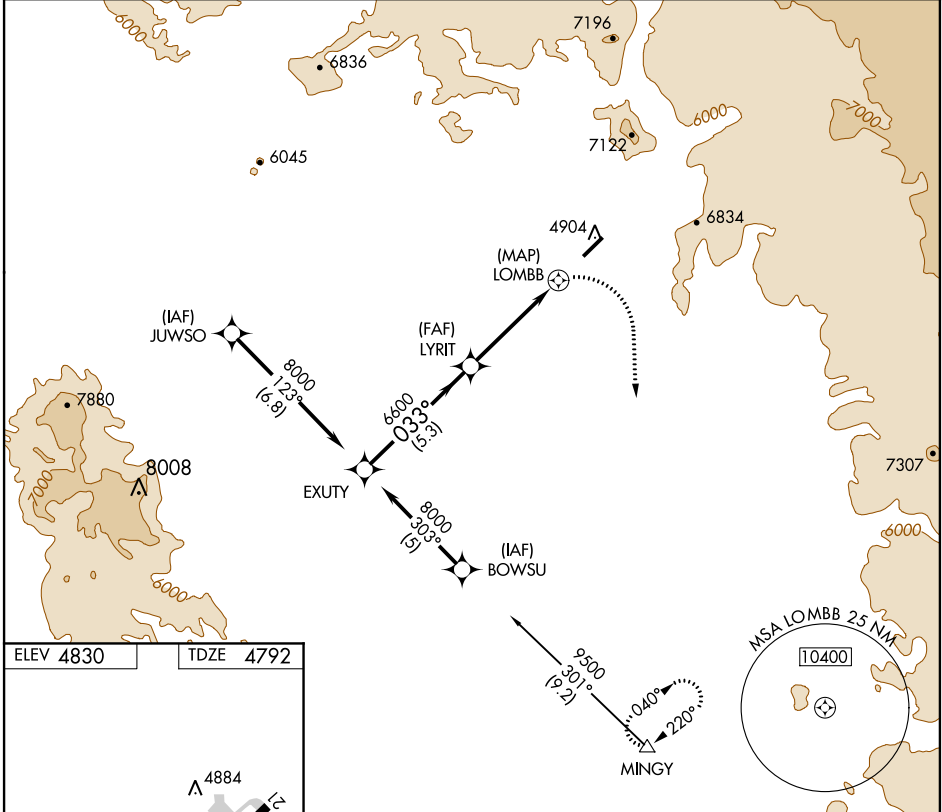
GPS RWY 3 SEDONA (SEZ)

APP CRS 033°	Rwy Idg 5132
	TDZE 4792
	Apt Elev 4830

⚠ When local altimeter not received, procedure not authorized.
⚠ NA Cat D circling not authorized northwest of Rwy 3-21.

MISSED APPROACH: Climbing right turn to 12000 direct MINGY WP and hold.

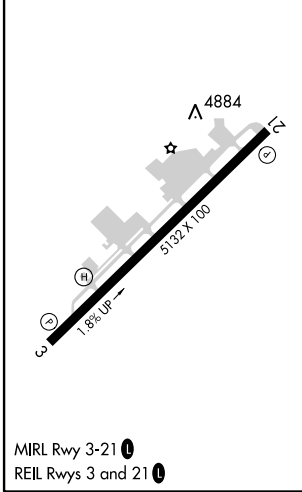
AWOS-2 118.525	PHOENIX APP CON* 126.375 236.775	PRESCOTT RADIO 122.3	UNICOM 123.0 (CTAF)
--------------------------	--	--------------------------------	-------------------------------



SW-4, 24 JUL 2014 to 21 AUG 2014

SW-4, 24 JUL 2014 to 21 AUG 2014

ELEV 4830	TDZE 4792
-----------	-----------



EXUTY	VGSIs and descent angles not coincident (VGS Angle 3.50\TCH 53).			12000	MINGY
8000	LYRIT	6600	LOMBB		
Procedure Turn NA					
5.3 NM		4.4 NM		1.3 NM	
CATEGORY	A	B	C	D	
S-3	6140-1½ 1348 (1400-1½)	6240-1½ 1448 (1500-1½)	6560-3	1768 (1800-3)	
CIRCLING	6140-1½ 1310 (1400-1½)	6240-1½ 1410 (1500-1½)	6560-3	1730 (1800-3)	

SEDONA, ARIZONA
Orig-A 14149

34°51'N-111°47'W

SEDONA (SEZ) GPS RWY 3

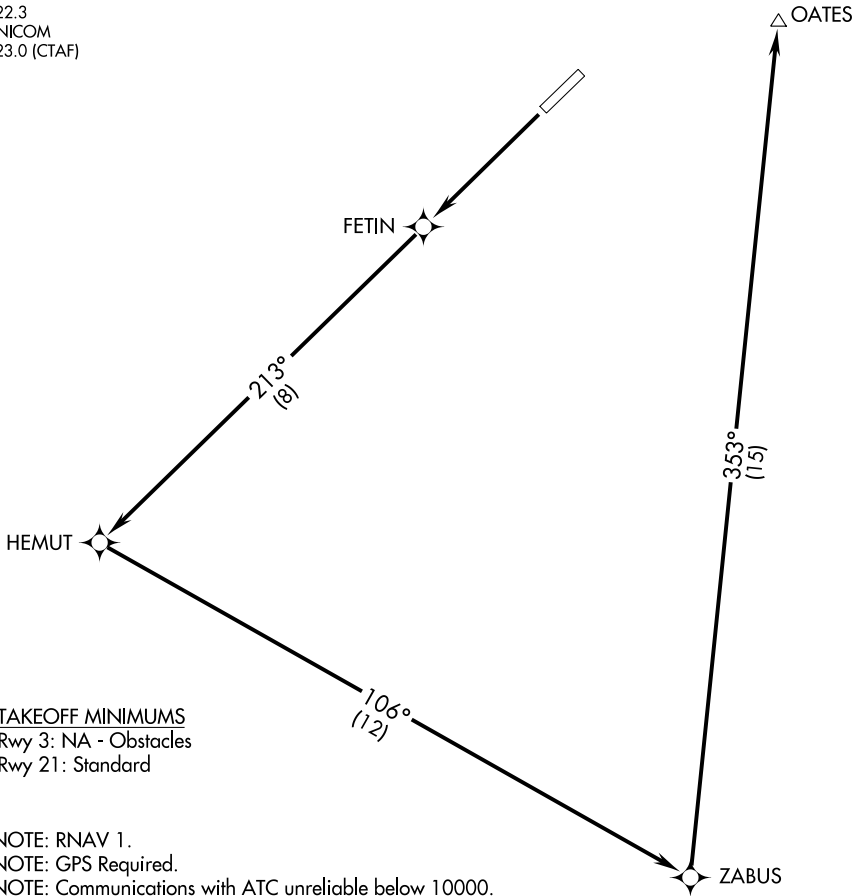
(OATES1.OATES) 14149

OATES ONE DEPARTURE (RNAV) (OBSTACLE)

SL-6169 (FAA)

SEDONA (SEZ)
SEDONA, ARIZONA

PHOENIX APP CON *
126.375 236.775
PRESCOTT RADIO
122.3
UNICOM
123.0 (CTAF)



TAKEOFF MINIMUMS
Rwy 3: NA - Obstacles
Rwy 21: Standard

NOTE: RNAV 1.
NOTE: GPS Required.
NOTE: Communications with ATC unreliable below 10000.

TAKEOFF OBSTACLE NOTES
Rwy 21: Trees beginning 1642' from DER, 240' right of centerline, up to 100' AGL/4786' MSL.
Bush 147' from DER, 202' left of centerline, 5' AGL/4740' MSL.

NOTE: Chart not to scale

DEPARTURE ROUTE DESCRIPTION

TAKEOFF RUNWAY 21: Climb direct FETIN then via 213° track/8 NM to HEMUT, then left turn via 106° track/12 NM to ZABUS, then left turn via 353° track/15 NM to OATES. Maintain 10500 or assigned altitude.

OATES ONE DEPARTURE (RNAV) (OBSTACLE)

(OATES1.OATES) 14149

SEDONA, ARIZONA
SEDONA (SEZ)

SW-4, 24 JUL 2014 to 21 AUG 2014

SW-4, 24 JUL 2014 to 21 AUG 2014



TAKEOFF MINIMUMS AND (OBSTACLE) DEPARTURE PROCEDURES

14205

INSTRUMENT APPROACH PROCEDURE CHARTS



IFR TAKEOFF MINIMUMS AND (OBSTACLE) DEPARTURE PROCEDURES

Civil Airports and Selected Military Airports

ALL USERS: Airports that have Departure Procedures (DPs) designed specifically to assist pilots in avoiding obstacles during the climb to the minimum enroute altitude, and/or airports that have civil IFR takeoff minimums other than standard, are listed below. Takeoff Minimums and Departure Procedures apply to all runways unless otherwise specified. Altitudes, unless otherwise indicated, are minimum altitudes in MSL.

DPs specifically designed for obstacle avoidance are referred to as Obstacle Departure Procedures (ODPs) and are described below in text, or published separately as a graphic procedure. If the (Obstacle) DP is published as a graphic procedure, its name will be listed below, and it can be found in either this volume (civil), or the applicable military volume, as appropriate. Users will recognize graphic obstacle DPs by the term "(OBSTACLE)" included in the procedure title; e.g., TETON TWO (OBSTACLE). If not specifically assigned a departure procedure (i.e., ODP, SID, or radar vector) as part of an IFR clearance, an ODP may be required to be flown for obstacle clearance, even though not specifically stated in the IFR clearance. When doing so in this manner, ATC should be informed when the ODP being used contains a specified route to be flown, restrictions before turning, and/or altitude restrictions.

Some ODPs, which are established solely for obstacle avoidance, require a climb in visual conditions to cross the airport, a fix, or a NAVAID in a specified direction, at or above a specified altitude. These procedures are called Visual Climb Over Airport (VCOA). To ensure safe and efficient operations, the pilot must verbally request approval from ATC to fly the VCOA when requesting their IFR clearance.

Graphic DPs designed by ATC to standardize traffic flows, ensure aircraft separation and enhance capacity are referred to as "Standard Instrument Departures (SIDs)". SIDs also provide obstacle clearance and are published under the appropriate airport section. ATC clearance must be received prior to flying a SID.

CIVIL USERS NOTE: Title 14 Code of Federal Regulations Part 91 prescribes standard takeoff rules and establishes takeoff minimums for certain operators as follows: (1) Aircraft having two engines or less - one statute mile. (2) Aircraft having more than two engines - one-half statute mile. These standard minima apply in the absence of any different minima listed below.

MILITARY USERS NOTE: Civil (nonstandard) TAKEOFF minima are published below. For military takeoff minima, refer to appropriate service directives.

NAME	TAKEOFF MINIMUMS	NAME	TAKEOFF MINIMUMS
BATTLE MOUNTAIN, NV		BLANDING, UT	
BATTLE MOUNTAIN (BAM)		BLANDING MUNI (BDG)	
AMDT 3 09127 (FAA)		AMDT 1A 14037 (FAA)	
TAKEOFF MINIMUMS: Rwy 3 , std. w/ a min climb of 282' per NM to 7300 or 4700-3 for climb in visual conditions.		TAKEOFF MINIMUMS: Rwy 35 , 800-1 or std. with a min. climb of 350 feet per NM to 6700.	
Rwy 12 , std. w/ a min climb of 386' per NM to 7600 or 4700-3 for climb in visual conditions.		DEPARTURE PROCEDURE: Rwy 17 , turn left, thence...	
DEPARTURE PROCEDURE: Rwy 3 , climb heading 032° to 8200 before proceeding on course or climb in visual conditions to cross Battle Mountain Airport at or above 9100 before proceeding on course. Rwy 12 , climb heading 122° and BAM R-076 to 10000 before proceeding on course or climb in visual conditions to cross Battle Mountain Airport at or above 9100 before proceeding on course. Rwy 21 , climb direct BAM VORTAC and BAM R-205 to 10100 before proceeding on course. Rwy 30 , climb heading 302° and BAM R-324 to 9100 before proceeding on course.		Rwy 21 , turn right, thence... ...climb to 9000 on heading 090° and DVC R-223 to DVC VORTAC, then continue climb on course to MEA. Rwy 35 , turn right climb to 9000 via heading 090° and DVC R-223 to DVC VORTAC, then continue climb on course to MEA.	
BEAVER, UT		BRIGHAM CITY, UT	
BEAVER MUNI (U52)		BRIGHAM CITY (BMC)	
ORIG 07242 (FAA)		AMDT 6A 11349 (FAA)	
TAKEOFF MINIMUMS: Rwys 7, 25 , NA-obstacles.		TAKEOFF MINIMUMS: Rwy 35 , NA	
Rwys 13, 31 , 2600-2¾ for climb in visual conditions.		DEPARTURE PROCEDURE: Rwy 17 , climbing right turn heading 207° and OGD R-331 to OGD VORTAC before proceeding on course.	
DEPARTURE PROCEDURE: Rwys 13, 31 , climb in visual conditions to cross Beaver Muni Airport Northwest bound at or above 8300 then climb to 10100 via MLF VORTAC R-102 to MLF VORTAC. Do not exceed 210 KIAS until established on MLF VORTAC R-102.		NOTE: Rwy 17 , poles 266' from DER, 558' right of centerline, 30' AGL/4258' MSL.	
BRYCE CANYON, UT			
BRYCE CANYON (BCE)			
AMDT 1 11069 (FAA)			
DEPARTURE PROCEDURE: use BRYCE DEPARTURE.			

14205



TAKEOFF MINIMUMS AND (OBSTACLE) DEPARTURE PROCEDURES





14205

BULLHEAD CITY, AZ

LAUGHLIN/BULLHEAD INTL (IFP)
AMDT 1 09183 (FAA)

TAKEOFF MINIMUMS: **Rwy 16**, std. w/ a min. climb of 370' per NM to 1800, or 1700-3 for climb in visual conditions. **Rwy 34**, std. w/ a min. climb of 495' per NM to 5500, or 1700-3 for climb in visual conditions.

DEPARTURE PROCEDURE: **Rwy 16**, climb via heading 164° and EED VORTAC R-334 to EED VORTAC, or for climb in visual conditions: cross Laughlin/Bullhead Intl airport at or above 2300, then continue climbing via heading 155° and EED VORTAC R-335 to EED VORTAC. **Rwy 34**, climb via heading 344° to 1600, then climbing right turn direct EED VORTAC, or for climb in visual conditions: cross Laughlin/Bullhead Intl airport at or above 2300, then continue climbing via heading 155° and EED VORTAC R-335 to EED VORTAC. **All Aircraft** climb in EED VORTAC holding pattern (East, right turn, 257° inbound) to cross EED VORTAC at or above MEA for direction of flight before proceeding on course.

NOTE: **Rwy 16**, multiple bushes beginning 3600' from DER, left of centerline, up to 12' AGL/1029' MSL. **Rwy 34**, multiple poles beginning 2211' from DER, right of centerline, up to 105' AGL/821' MSL.

CARSON CITY, NV

CARSON (CXP)
ORIG 08325 (FAA)

TAKEOFF MINIMUMS: **Rwy 27**, NA-obstacles.
DEPARTURE PROCEDURE: **Rwy 9**, use JIMPA DEPARTURE.

CASA GRANDE, AZ

CASA GRANDE MUNI (CGZ)
AMDT 1B 14037 (FAA)

TAKEOFF MINIMUMS: **Rwy 5**, 300-1 or std. w/ min. climb of 354' per NM to 1700.

DEPARTURE PROCEDURE: **Rwy 5**, climbing right turn direct TFD VORTAC, thence...

Rwy 23, climb direct TFD VORTAC, thence...
...continue climb in holding pattern (SW, right turns, 048° inbound) to MEA for direction of flight.
NOTE: **Rwy 5**, pole 4034' from DER, 805' left of centerline, 109' AGL/1593' MSL.

CEDAR CITY, UT

CEDAR CITY RGNL (CDC)
AMDT 2A 14037 (FAA)

TAKEOFF MINIMUMS: **Rwy 8**, 3500-3 or std. with a min. climb of 450' per NM to 10000.

DEPARTURE PROCEDURE: **Rwys 2, 8**, turn left, thence...

Rwys 20, 26, turn right, thence...
...climb direct to CDC VOR/DME, continue climb to 9000 on CDC R-348. Northbound continue on course. All others reverse course, climb to cross CDC VOR/DME at or above MCA for direction of flight.

CHANDLER, AZ

CHANDLER MUNI (CHD)

DEPARTURE PROCEDURE: **Rwy 4R**, climbing left turn heading 220°. **Rwys 22L, 22R**, climbing left turn heading 190°. **All Aircraft**, continue climb via TFD R-350 to TFD VORTAC. NOTE: **Rwy 4L**, multiple towers and buildings beginning 69' from DER, 397' left of centerline, up to 80' AGL/1319' MSL.

STELLAR AIRPARK (P19)

DEPARTURE PROCEDURE: **Rwy 17**, turn left, climb via heading 150°. **Rwy 35**, turn right. **All aircraft** climb via TFD R-350 direct TFD VORTAC. NOTE: **Rwy 17**, tower and signs beginning 574' from DER, 183' right of centerline, up to 50' AGL/1124' MSL. Sign 611' from DER, 365' left of centerline, 42' AGL/1214' MSL.

CLIFTON/MORENCI, AZ

GREENLEE COUNTY (CFT)
ORIG 10210 (FAA)

DEPARTURE PROCEDURE: Use SAN SIMON DEPARTURE.

COLORADO CITY, AZ

COLORADO CITY MUNI (AZC)
ORIG 95089 (FAA)

TAKEOFF MINIMUMS: **Rwy 2**, NA.
DEPARTURE PROCEDURE: **Rwy 11**, turn right. **Rwys 20, 29**, turn left. **All aircraft** climb to 7400 via the 160° bearing from AZC NDB then continue climb on course.

COOLIDGE, AZ

COOLIDGE MUNI (P08)
ORIG 96284 (FAA)

DEPARTURE PROCEDURE: **Rwys 5, 35**, climbing left turn heading 280° to intercept TFD R-063, then via R-063 to TFD VORTAC before proceeding on course. **Rwy 17**, climbing right turn heading 240° to intercept TFD R-090, then via R-090 to TFD VORTAC before proceeding on course. **Rwy 23**, climb runway heading to intercept TFD R-090, then via R-090 to TFD VORTAC before proceeding on course.

DAVIS-MONTHAN AFB (KDMA),

TUCSON, AZ AMDT 1 14205

TAKE-OFF MINIMUMS: **Rwy 12**, 5300-3, or standard with minimum climb of 234 ft/NM to 9700.

DEPARTURE PROCEDURE: **Rwy 12**, climb to 10,000 on track 125°, intercept DMA R-120 for RADAR vectors. **Rwy 30**, climb to 6500 on track 305°, intercept DMA R-312 for RADAR vectors.

TAKE-OFF OBSTACLES: **Rwy 12**: Terrain 2707' MSL, 37' from DER, 415' left of centerline. Terrain 2707' MSL, 8' from DER, 424' left of centerline. Terrain 2707' MSL, 0' from DER, 500' left of centerline. Pole 45' AGL/2776' MSL, 3511' from DER, 1052' left of centerline. Vehicle 10' AGL/2727' MSL, 1710' from DER, 195' right of centerline. Vehicle 10' AGL/2727' MSL, 1498' from DER, 787' left of centerline. Aircraft tail 39' AGL/2748' MSL, 81' from DER, 572' left of centerline. **Rwy 30**: Terrain 2590' MSL, 34' from DER, 220' left of centerline. Terrain 2592' MSL, 0' from DER, 500' right of centerline. Terrain 2592' MSL, 13' from DER, 493' right of centerline. Pylon 86' AGL/2645' MSL, 3601' from DER, 1209' left of centerline. Pylon 98' AGL/2672' MSL, 4455' from DER, 332' left of centerline. Pylon 98' AGL/2665' MSL, 3771' from DER, 882' left of centerline. Pylon 98' AGL/2664' MSL, 4112' from DER, 606' left of centerline. Pylon 98' AGL/2665' MSL, 3416' from DER, 1169' left of centerline. Pylon 86' AGL/2658' MSL, 3296' from DER, 1373' left of centerline. Terrain 2591' MSL, 0' from DER, 500' left of centerline. Aircraft tail 39' AGL/2635' MSL, 34' inward of DER, 510' right of centerline.

24 JUL 2014 to 21 AUG 2014

24 JUL 2014 to 21 AUG 2014

14205





TAKEOFF MINIMUMS AND (OBSTACLE) DEPARTURE PROCEDURES



14205

DELTA, UT

DELTA MUNI (DTA)

ORIG 05356 (FAA)

TAKEOFF MINIMUMS: **Rwy 17**, std. with a min. climb of 412' per NM to 6600, or 1800-3 for climb in visual conditions. Climb in visual conditions NA at night.

Rwy 12, NA-terrain. **Rwy 30**, NA-airspace.

DEPARTURE PROCEDURE: **Rwy 17**, climb via DTA VORTAC R-347 to DTA VORTAC, or climb in visual conditions to cross DER southbound at or above 6400, then via DTA VORTAC R-347 to DTA VORTAC, thence...**Rwy 35**, climb via heading 346° to 5800, then climbing left turn via heading 180° and DTA VORTAC R-310 to DTA VORTAC, thence...

...climb in holding pattern (hold south, left turn, 004° inbound) to cross DTA VORTAC at or above airway MEA for route of flight.

NOTE: **Rwy 17**, trees 1598' from DER, 62' right of centerline, 60' AGL/4799' MSL.

DOUGLAS BISBEE, AZ

BISBEE- DOUGLAS INTL (DUG)

AMDT 1 12040 (FAA)

DEPARTURE PROCEDURE: **Rwys 8,17**, climbing right turn on heading 330° to intercept DUG VORTAC R-286 to 9500. **Rwy 26**, climbing right turn to intercept DUG VORTAC R-286 to 9500. **Rwy 35**, climbing left turn to intercept DUG VORTAC R-286 to 9600.

NOTE: **Rwy 8**, trees and terrain beginning 145' from DER, 51' left of centerline, up to 8' AGL/4220' MSL. Trees and terrain beginning 22' from DER, 247' right of centerline, up to 13' AGL/4197' MSL. **Rwy 17**, trees and terrain beginning 91' from DER, 76' left of centerline, up to 5' AGL/4118' MSL. Trees and terrain beginning 12' from DER, 146' right of centerline, up to 5' AGL/4115' MSL. **Rwy 26**, tree and terrain beginning 16' from DER, 233' left of centerline, up to 5' AGL/4167' MSL. Trees and terrain beginning 17' from DER, 32' right of centerline, up to 7' AGL/4167' MSL. **Rwy 35**, trees and terrain beginning 118' from DER, 15' left of centerline, up to 6' AGL/4190' MSL. Tree and terrain beginning 75' from DER, 100' right of centerline, up to 11' AGL/4200' MSL.

DUCHESNE, UT

DUCHESNE MUNI (U69)

ORIG 77223 (FAA)

DEPARTURE PROCEDURE: Climb direct to MTU VORTAC to depart at or above 7200 eastbound or 10000 westbound.

ELKO, NV

ELKO RGNL (EKO)

AMDT 5A 11013 (FAA)

TAKEOFF MINIMUMS: **Rwys 12,30**, NA-terrain. **Rwy 5**, std. w/ min. climb of 495' per NM to 8000. **Rwy 23**, 2500-3 or std. w/ min. climb of 340' per NM to 8000.

DEPARTURE PROCEDURE: **Rwy 5**, climb heading 053° to 6000, then climbing right turn direct BQU VOR/DME, then. . . **Rwy 23**, (V32 Southwest) climb heading 233° to 6000, then climbing left turn heading 200° to intercept BQU R-241 (V32). **Rwy 23**, (all others), climb heading 233° to 6000, then climbing left turn direct BQU VOR/DME, then. . .

climb in BQU VOR/DME holding pattern (South, left turns, 340° inbound) to cross BQU VOR/DME at the MEA/MCA/MOCA for direction of flight.

NOTE: **Rwy 5**, trees, poles, and antennas beginning 412' from DER, 131' left of centerline, up to 107' AGL/5207' MSL. Trees poles, antennas and lights beginning 497' from DER, 84' right of centerline, up to 91' AGL/5191' MSL. **Rwy 23**, pole 1244' from DER, 663' left of centerline, 45' AGL/5085' MSL. Signs, poles, road, silo and tree beginning 673' from DER, 171' right of centerline, up to 68' AGL/5132' MSL.

ELY, NV

ELY AIRPORT-YELLAND FIELD (ELY)

AMDT 2 11181 (FAA)

DEPARTURE PROCEDURE: use ELY DEPARTURE.

EUREKA, NV

EUREKA (05U)

ORIG 13234 (FAA)

TAKEOFF MINIMUMS: **Rwy 18**, NA-Terrain.

DEPARTURE PROCEDURE: use MINES (RNAV) DEPARTURE.

FALLON, NV

FALLON MUNI (FLX)

AMDT 1 10154 (FAA)

DEPARTURE PROCEDURE: **Rwy 21**, climbing right turn...**Rwys 3, 13, 31**, climbing left turn...

...to 9300 direct HZN VORTAC, continue climb in HZN VORTAC holding pattern (West, left turns, 075° inbound) cross HZN VORTAC at or above 9300 before proceeding on course, continue climb to MEA or assigned altitude.

NOTE: **Rwy 3**, vehicle on road 39' from DER, 306' right of centerline, 15' AGL/3971' MSL. Tree 111' from DER, 424' left of centerline 25' AGL/3988' MSL. Tree 364' from DER, 272' right of centerline, 25' AGL/3988' MSL. **Rwy 13**, trees beginning 3' from DER, 494' right of centerline, up to 25' AGL/4021' MSL. Vehicle on road beginning 22' from DER, 80' left of centerline, up to 15' AGL/3978' MSL. **Rwy 21**, vehicle on road 477' from DER, 241' left of centerline, 15' AGL/3984' MSL. Tree 710' from DER, 75' left of centerline, 25' AGL/3994' MSL. **Rwy 31**, trees beginning 52' from DER, 159' right of centerline, up to 25' AGL/3975' MSL. Trees beginning 111' from DER, 140' left of centerline, up to 25' AGL/3981' MSL.

24 JUL 2014 to 21 AUG 2014

24 JUL 2014 to 21 AUG 2014

14205



TAKEOFF MINIMUMS AND (OBSTACLE) DEPARTURE PROCEDURES





TAKEOFF MINIMUMS AND (OBSTACLE) DEPARTURE PROCEDURES



14205

FALLON NAS(VAN VOORHIS FLD)(KNFL)

FALLON, NV..... 10154

TAKEOFF MINIMUMS: **Rwy 13L/R**, Diverse departures authorized 131° CW 311°, standard with minimum climb rate of 245 ft/NM to 7200. **Rwy 31L/R**, Diverse departures authorized 083° CCW 131°, standard with minimum climb rate of 225 ft/NM to 7200. **Rwy 7**, Diverse departures authorized, standard with minimum climb rate of 295 ft/NM to 12,200 (Civil) or 275 ft/NM to 12,000 (Military). **Rwy 25**, Diverse departures authorized 132° CW 073°, standard with minimum climb rate of 250 ft/NM to 12,200 (Civil) or 240 ft/NM to 12,000 (Military).

FILLMORE, UT

FILLMORE MUNI (FOM)

ORIG 10322 (FAA)

TAKEOFF MINIMUMS: **Rwy 4**, std. w/ min. climb of 250' per NM to 6200, or 1800-3 for climb in visual conditions.

DEPARTURE PROCEDURE: **Rwy 4**, climbing left turn to 9600 on DTA R-141 to DTA VORTAC, climb in DTA VORTAC holding pattern (South, left turns, 004° inbound) to cross DTA VORTAC at or above MEA for route of flight or for climb in visual conditions cross Fillmore Muni airport Northwest bound at or above 6600, then climb to 9600 on DTA R-146 to DTA VORTAC. Continue climb in DTA VORTAC holding pattern (South, left turns, 004° inbound) to cross DTA VORTAC at or above MEA for route of flight. **Rwy 22**, climbing right turn to 9600 on DTA R-152 to DTA VORTAC, climb in DTA VORTAC holding pattern (South, left turns, 004° inbound) to cross DTA VORTAC at or above MEA for route of flight.

NOTE: **Rwy 4**, light 60' from DER, 393' left of centerline, 8' AGL/4987' MSL. Windsock 129' from DER, 301' left of centerline, 21' AGL/5000' MSL. Rising terrain 132' from DER, 385' right of centerline, 4989' MSL. Fence beginning 138' from DER, 174' right of centerline, up to 15' AGL/4996' MSL. Buildings beginning 259' from DER, 455' right of centerline, up to 13' AGL/5012' MSL. Beacon 311' from DER, 505' left of centerline, 52' AGL/5031' MSL. Trees beginning 333' from DER, 242' left of centerline, up to 37' AGL/5034' MSL. Vehicle on road beginning 472' from DER, 608' left to 1093' right of centerline, up to 35' AGL/5073' MSL. Pole 488' from DER, 620' left of centerline, 38' AGL/5037' MSL. Windmeter, 623' from DER, 342' left of centerline, 9' AGL/5008' MSL. Building 873' from DER, 196' left of centerline, 17' AGL/5016' MSL. **Rwy 22**, fence 97' from DER, 302' left of centerline, 15' AGL/4916' MSL. Vehicle on road beginning 228' from DER, 398' left of centerline, up to 9' AGL/4928' MSL.

FLAGSTAFF, AZ

FLAGSTAFF PULLIAM (FLG)

AMDT 2A 14037 (FAA)

DEPARTURE PROCEDURE: **Rwy 3**, turn right.

Rwy 21, turn left. Aircraft departing FLG R-160 CW R-175 climb on course. All others climb southbound on FLG R-172 to 9000, then climbing left turn direct FLG VOR/DME.

NOTE: **Rwy 21**, trees beginning 73' from DER, left and right of centerline, up to 85' AGL/7065' MSL.

FORT HUACHUCA-SIERRA VISTA, AZ

SIERRA VISTA MUNI-LIBBY AAF (FHU)

AMDT 3 13346 (FAA)

TAKEOFF MINIMUMS: **Rwy 21**, NA - Terrain. **Rwy 26**, std. w/min. climb of 330' per NM to 7300. DEPARTURE PROCEDURE: **Rwys 3,8,12**, climbing left turn, thence...

Rwys 26,30, climbing right turn, thence...
... **All aircraft**, intercept FHU VOR/DME R-021 or bearing 018° from DAO NOB to TOMBS INT, continue climb in TOMBS holding pattern (hold N, left turns, 201° inbound to FHU VOR/DME or 198° inbound to DAO NDB) to 9500 before proceeding on course.

NOTE: **Rwy 3**, trees 253' from DER, 130' left of centerline, 10' AGL/4595' MSL. Tree 199' from DER, 271' right of centerline, 10' AGL/4595' MSL. **Rwy 8**, reflector 121' from DER, 174' right of centerline, 4' AGL/4603' MSL. **Rwy 12**, terrain beginning 22' from DER, 93' right of centerline, up to 4639' MSL. **Rwy 26**, reflector and terrain beginning 102' from DER, 173' left of centerline, up to 4' AGL/4747' MSL. Reflector 101' from DER 173' right of centerline, 4' AGL/4723' MSL. **Rwy 30**, multiple bushes beginning 334' from DER, 112' left of centerline, up to 15' AGL/4626' MSL. Bush 132' from DER, 198' right of centerline, 16' AGL/4627' MSL.

GLENDALE, AZ

GLENDALE MUNI (GEU)

AMDT 2 07242 (FAA)

TAKEOFF MINIMUMS: **Rwy 19**, NA-ATC.

DEPARTURE PROCEDURE: **Rwy 1**, Use DRAKE (RNAV) DEPARTURE.

GLOBE, AZ

SAN CARLOS APACHE (P13)

AMDT 2 08101 (FAA)

DEPARTURE PROCEDURE: Use IZTIR DEPARTURE.

GOODYEAR, AZ

PHOENIX GOODYEAR (GYR)

ORIG 06271 (FAA)

TAKEOFF MINIMUMS: **Rwy 3**, NA-ATC.

DEPARTURE PROCEDURE: **Rwy 21**, Use POTER DEPARTURE.

GRAND CANYON, AZ

GRAND CANYON NATIONAL PARK (GCN)

ORIG 07242 (FAA)

TAKEOFF MINIMUMS: **Rwy 3**, NA-environmental.

DEPARTURE PROCEDURE: **Rwy 21**, use GRAND DEPARTURE.

24 JUL 2014 to 21 AUG 2014

24 JUL 2014 to 21 AUG 2014

14205



TAKEOFF MINIMUMS AND (OBSTACLE) DEPARTURE PROCEDURES





TAKEOFF MINIMUMS AND (OBSTACLE) DEPARTURE PROCEDURES



14205

HEBER, UTHEBER CITY MUNI-RUSS MCDONALD FIELD
(36U)

AMDT 3A 14149 (FAA)

TAKEOFF MINIMUMS: **Rwys 4, 22**, 5800-3 for climb in visual conditions. Climb in visual conditions NA at night.DEPARTURE PROCEDURE: **Rwy 4**, for climb in visual conditions, cross Heber City Muni-Russ McDonald Field at or above 11300 MSL before proceeding on course.When executing VCOA, notify ATC prior to departure. **Rwy 22**, for climb in visual conditions, cross Heber City Muni-Russ McDonald Field at or above 11300 MSL before proceeding on course. When executing VCOA, notify ATC prior to departure.NOTE: **Rwy 4**, multiple trees, bushes, poles, buildings, vehicles, terrain, sign, fence, and wind sock beginning 20' from DER, left and right of centerline, up to 100' AGL/5708' MSL. **Rwy 22**, multiple trees beginning 608' from DER, left and right of centerline, up to 100' AGL/6411' MSL. Multiple bushes, poles, terrain and fence beginning 12' from DER, 225' left of centerline, up to 25' AGL/6344' MSL.**HILL AFB (KHIF)**

OGDEN, UT

Diverse departures not authorized, use radar vectors or published Departure Procedures (DP) for obstacle avoidance.

HUNTINGTON, UT

HUNTINGTON MUNI (69V)

AMDT 2A 09295 (FAA)

TAKEOFF MINIMUMS: **Rwys 18, 26, 36**, NA. **Rwy 30**, 1700-3 or std. with a min. climb of 300' per NM to 8100.DEPARTURE PROCEDURE: **Rwys 8, 12**, climbing left turn direct PUC VOR/DME...**Rwy 30**, climbing right turn direct PUC VOR/DME....
...continue climb in PUC VOR/DME holding pattern (hold S, right turns, 009° inbound) to MEA for direction of flight.NOTE: **Rwy 8**, tree 2663' from DER, 922' left of centerline, 40' AGL/5979' MSL. **Rwy 12**, tree 333' from DER, 132' right of centerline, 40' AGL/5919' MSL. **Rwy 30**, tree 2065' from DER, 875' left of centerline, 40' AGL/5999' MSL.**KANAB, UT**

KANAB MUNI (KNB)

AMDT 3 10042 (FAA)

TAKEOFF MINIMUMS: **Rwy 1**, std. with min. climb of 742' per NM to 6600, or 1100-3 with min. climb of 535' per NM to 6900, or 2400-3 for climb in visual conditions.DEPARTURE PROCEDURE: **Rwy 19**, climb heading 171° to 6800 before turning. **Rwy 1**, climb heading 006° to 6100 before turning, or for climb in visual conditions, cross Kanab Muni airport at or above 7100 before proceeding on course.NOTE: **Rwy 1**, vent on building 554' from DER, 370' left of centerline, 16' AGL/4884' MSL. Trees beginning 1138' from DER, 302' left of centerline, up to 100' AGL/5939' MSL. Rising terrain and trees beginning 1.68 NM from DER, 247' right of centerline, up to 100' AGL/5239' MSL. Rising terrain and trees beginning 1.76 NM from DER, 766' left of centerline, up to 100' AGL/5599' MSL. Rising terrain beginning 3.5 NM from DER, left and right of centerline, up to 6359' MSL. **Rwy 19**, trees beginning 271' from DER, 506' right of centerline, up to 100' AGL/4899' MSL.**KINGMAN, AZ**

KINGMAN (IGM)

TAKEOFF MINIMUMS: **Rwys 3,17,21,35**, 800-1 or std. with a min. climb of 210' per NM to 7000.

DEPARTURE PROCEDURE: Climb northbound on IGM R-010 until reaching 6000; reverse course to the left and continue climb to 9000 direct to IGM. If unable to cross IGM at 9000 continue climb in IGM holding pattern (SW, left turns, 027° inbound).

LAGUNA AAF (LGF)

YUMA PROVING GROUND, AZ (03247)

Rwy 6, 18, 36, turn right, climb to 3600 direct BZA VORTAC.**Rwy 24**, climb to 3600 direct to BZA VORTAC.TAKEOFF OBSTACLES:
Rwy 18, 386' (6' AGL) windssock, 818' from DER, 194' left of centerline.**LAKE HAVASU CITY, AZ**

LAKE HAVASU CITY (HII)

AMDT 2 12152 (FAA)

TAKEOFF MINIMUMS: **Rwy 14**, std. w/min. climb of 465' per NM to 4800, or 1500-3 for climb in visual conditions. **Rwy 32,600-1¼** w/min. climb of 492' per NM to 1100, or 1500-3 for climb in visual conditions.DEPARTURE PROCEDURE: **Rwy 14**, climbing right turn heading 300° to intercept EED VORTAC R-155 to EED VORTAC, continue climb in EED VORTAC holding pattern (East, right turns, 257° inbound) to cross EED VORTAC at or above 6100 before proceeding on course or ...**Rwy 32**, climbing left turn heading 290° to intercept EED VORTAC R-155 to EED VORTAC, continue climb in EED VORTAC holding pattern (East, right turns, 257° inbound) to cross EED VORTAC at or above 6100 before proceeding on course or ...**Rwys 14, 32**, ... For climb in visual conditions: cross Lake Havasu City airport northwest bound at or above 2300, then Intercept EED VORTAC R-138 to EED VORTAC, continue climb in EED VORTAC holding pattern (East, right turns, 257° inbound) to cross EED VORTAC at or above 6100 before proceeding on course. When executing VCOA, notify ATC prior to departure.NOTE: **Rwy 14**, pole 3327' from DER, 46' right of centerline, 107' AGL/868' MSL. Poles 3468' from DER, 195' left of centerline, up to 107' AGL/890' MSL. Trees/bushes 976' from DER, 380' left of centerline, up to 46' AGL/829' MSL. Terrain 143' from DER, 346' left of centerline, up to 804' MSL. **Rwy 32**, trees 1544' from DER, 416' right of centerline, up to 44' AGL/793' MSL.

24 JUL 2014 to 21 AUG 2014

24 JUL 2014 to 21 AUG 2014

14205



TAKEOFF MINIMUMS AND (OBSTACLE) DEPARTURE PROCEDURES



TAKEOFF MINIMUMS AND (OBSTACLE) DEPARTURE PROCEDURES

14205

LAS VEGAS, NV

HENDERSON EXECUTIVE (HND)

ORIG 05132 (FAA)

TAKEOFF MINIMUMS: **Rwy 17L/R**, Cat A/B std. with a min. climb of 491' per NM to 6000, or 2100-3 for climb in visual conditions, Cat C/D NA. **Rwy 35L/R**, Cat A/B std. with a min. climb of 312' per NM to 4700, or 2100-3 for climb in visual conditions, Cat C/D NA.

DEPARTURE PROCEDURE: **Rwy 17L/R**, climbing right turn via LAS R-157 to LAS VORTAC before proceeding on course, or for climb in visual conditions: Cross Henderson Executive Airport eastbound at or above 4500, then via BLD R-249 to BLD VORTAC. **Rwy 35L/R**, climbing right turn via BLD R-257 to BLD VORTAC before proceeding on course, or for climb in visual conditions: Cross Henderson Executive Airport eastbound at or above 4500, then via BLD R-249 to BLD VORTAC.

NOTE: **Rwy 17L**, tree 5610' from DER, 82' left of centerline, 100' AGL/2739' MSL. Tree 1.9 miles from DER, 1495' left of centerline, 100' AGL/2859' MSL. **Rwy 17R**, tree 4041' from DER, 859' left of centerline, 100' AGL/2739' MSL.

MCCARRAN INTL (LAS)

AMDT 6 10210 (FAA)

TAKEOFF MINIMUMS: **Rwys 19L/R**, std. w/ min. climb of 210' per NM to 2600. **Rwy 25R**, 300-2 or standard with a minimum climb of 230' per NM to 2600.

DEPARTURE PROCEDURE: **Rwys 1L/R**, climbing right turn direct BLD VORTAC before proceeding on course. **Rwys 7L/R**, climb heading 075° to 3700, then climbing right turn direct BLD VORTAC before proceeding on course. **Rwys 25 L/R**, climb heading 255° to 2800 ,then climbing right turn direct BLD VORTAC before proceeding on course. **Rwys 19 L/R**, climbing left turn via heading 120° and BLD R-257 direct BLD VORTAC before proceeding on course.

NOTE: **Rwy 1L**, building 1508' from DER, 463' left of centerline, 71' AGL/2146' MSL. Pole 453' from DER, 283' left of centerline, 38' AGL/2118' MSL. Sign 1042' from DER, 694' left of centerline, 35' AGL/2124' MSL. **Rwy 1R**, sign 1331' from DER, 448' right of centerline, 60' AGL/2120' MSL. Vents 604' from DER, 539' right of centerline, up to 17' AGL/2095' MSL. **Rwy 7L**, trees 761' from DER, left and right of centerline, up to 42' AGL/2074' MSL. Pole 747' from DER, 442' right of centerline, 25' AGL/2057' MSL. **Rwy 7R**, tower 1457' from DER, 847' right of centerline, 65' AGL/2096' MSL. **Rwy 19L**, multiple buildings, trees and poles 1394' from DER, 251' right of centerline, up to 96' AGL/2284' MSL. Sign 2181' from DER, 1062' right of centerline, 36' AGL/2236' MSL. **Rwy 19R**, trees 1563' from DER, 329' left of centerline, up to 55' AGL/ 2236' MSL. Multiple buildings, signs and poles 197' from DER, 59' right of centerline, up to 75' AGL/2291' MSL. **Rwy25L**, multiple poles, sign and buildings 1003' from DER, 145' left of centerline, up to 97' AGL/2291' MSL. Tree 2837' from DER, 1008' left of centerline, 72' AGL/2230' MSL. Railroad 2564' from DER, 773' left of centerline, 66' AGL/2223' MSL.

Rwy 25R, multiple poles and trees 533' from DER, 1' left of centerline, up to 271' AGL/2457' MSL. Building 1822' from DER, 652' left of centerline, 59' AGL/2238' MSL. Roads 669' from DER, 17' right of centerline, up to 29'AGL/2208' MSL.

NORTH LAS VEGAS (VGT)

AMDT 3 08045 (FAA)

DEPARTURE PROCEDURE: Use BOULDER CITY DEPARTURE.

LOGAN, UT

LOGAN-CACHE (LGU)

AMDT 8 09351 (FAA)

TAKEOFF MINIMUMS: **Rwys 10,28** ,NA-obstacles. DEPARTURE PROCEDURE: **Rwys 17, 35**, use ORNEY DEPARTURE.

LOVELOCK, NV

DERBY FIELD (LLO)

ORIG-B 11349 (FAA)

TAKEOFF MINIMUMS: **Rwy 2**, 2300-2 or std. with a min. climb of 300' per NM to 6200. **Rwy 8**, 1100-1 or std. with a min. climb of 250' per NM to 5000. **Rwys 20, 26**, 2300-2 or std. with a min. climb of 260' per NM to 6200.

DEPARTURE PROCEDURE: **Rwy 2**, turn right. **Rwys 8,20,26**, turn left, climb direct LLC VORTAC. Aircraft departing 330° CW 359° climb via LLC R-333 to ROBUD INT, 360° CW 089° climb in LLC VORTAC holding pattern (hold NW, left turns, 153° inbound) to depart LLC VORTAC at or above 8600; 090° CW 219° climb on course; 220° CW 329° climb in LLC VORTAC holding pattern to depart LLC VORTAC at or above 8600. Continue climb on course to MEA or assigned altitude.

LUKE AFB (KLUF),

GLENDALE, AZ AMDT 4, 14009

DEPARTURE PROCEDURE: **Rwy 3L, 3R**, Climb heading 030° to LUF 4 DME, then climbing left turn on a heading between 320° CW to 360° from DER. Expect RADAR vectors on course from Luke RAPCON. **Rwy 21L, 21R**, Climb heading 210° to LUF 8 DME, then climb on a heading between 180° CW to 222° from DER. Expect RADAR vectors on course from Luke RAPCON.

TAKE-OFF OBSTACLES: **Rwy 3L**: Taxiing aircraft, 19' AGL/1123' MSL, 1221' from DER, 782' left of centerline. Taxiing aircraft, 19' AGL/1123' MSL, 1407' from DER, 609' left of centerline. **Rwy 21L**: Taxiing aircraft, 38' AGL/1117' MSL, 1428' from DER, 774' left of centerline.

MARANA, AZ

MARANA RGNL(AVQ)

ORIG-A 13234 (FAA)

TAKEOFF MINIMUMS: **Rwys 3, 12**, N/A-Obstacles DEPARTURE PROCEDURE: **Rwy 21**, climb to 6500 via heading 360° and TUS R-308 to TOTEC Int/TUS 57 DME, then as filed. **Rwy 30**, climb to 6500 via heading 303° intercept TUS R-308 above 3500, to TOTEC Int/TUS 57 DME, then as filed.

NOTE: **Rwy 21**, road 53' from DER, 413' left of centerline, 15' AGL/2035' MSL. Tree 800' from DER, 695' left of centerline, 32' AGL/2043' MSL. Multiple trees and poles beginning 518' from DER, 190' right of centerline, up to 38' AGL/2049' MSL. **Rwy 30**, multiple trees beginning 148' from DER, 275' right of centerline, up to 19' AGL/2020' MSL.

MESA, AZ

FALCON FIELD (FFZ)

AMDT 4 10210 (FAA)

DEPARTURE PROCEDURE: use MESA DEPARTURE.

24 JUL 2014 to 21 AUG 2014

24 JUL 2014 to 21 AUG 2014

14205

TAKEOFF MINIMUMS AND (OBSTACLE) DEPARTURE PROCEDURES



TAKEOFF MINIMUMS AND (OBSTACLE) DEPARTURE PROCEDURES



14205

MICHAEL AAF (KDPG),

DUGWAY PROVING

GROUND, UT. AMDT 2, 12236

DEPARTURE PROCEDURES: **Rwy 12**, Climb heading 122° to 5700, then climbing right turn on a heading between 202° CW to 302° to 10,000 before proceeding on course. **Rwy 30**, Climbing left turn on a heading between 267° CW to 300° to 10,000 before proceeding on course.

MILFORD, UT

MILFORD MUNI/BEN AND JUDY BRISCOE FIELD (MLF)

AMDT 2 12096 (FAA)

TAKEOFF MINIMUMS: **Rwy 34**, std. w/min. climb of 487' per NM to 6500 or 1500-3 for climb in visual conditions.

DEPARTURE PROCEDURE: **Rwy 16**, climb direct MLF VORTAC, thence ...

... Aircraft departing on V235 or V21 southbound proceed on course.

... All other aircraft climb to 11000 on MLF VORTAC R-168, then right turn direct MLF VORTAC. Continue climb-in-hold, right turns, 348° inbound to cross MLF VORTAC at or above MEA/MCA for route of flight. **Rwy 34**, climbing left turn to intercept MLF VORTAC R-310 to MLF VORTAC, thence...

... Aircraft departing on V235 or V21 southbound; proceed on course .

... All other aircraft, climb-in-hold, MLF VORTAC, right turns, 348° inbound to cross MLF VORTAC at or above MEA/MCA for Route of flight.

... or climb in visual conditions to cross Milford Muni/Ben and Judy Briscoe Field airport southbound at or above 6400, then climb on MLF VORTAC R-345 to MLF VORTAC. Aircraft departing on V235 and V21 southbound; proceed on course. All other aircraft climb to 11000 on MLF VORTAC R-168, then, right turn direct MLF VORTAC. Continue climb in- hold, right turns, 348° inbound to cross MLF VORTAC at or above MEA/MCA for route of flight.

NOTE: **Rwy 16**, trees beginning 440' from DER, 332' right of centerline, up to 100' AGL/5159' MSL. Trees beginning 4912' from DER, 1451' right of centerline, up to 100' AGL/5179' MSL. **Rwy 34**, vehicles on roadway 231' from DER, across centerline, up to 15' AGL/5054' MSL. Trees beginning 3177' from DER, 508' left of centerline, up to 100' AGL/5119' MSL.

MINDEN, NV

MINDEN-TAHOE (MEV)

AMDT 2 11349 (FAA)

TAKEOFF MINIMUMS: **Rwys 12,16,30**, NA - Obstacles.

DEPARTURE PROCEDURE: **Rwy 34**, use MINDEN (RNAV) DEPARTURE.

MOAB, UT

CANYONLANDS FIELD (CNY)

AMDT 3A 14037 (FAA)

TAKEOFF MINIMUMS: **Rwy 3**, std. with a min. climb of 320' per NM to 5800. **Rwy 21**, std. with a min. climb of 330' per NM to 5400.

DEPARTURE PROCEDURE: **Rwy 3**, turn left, thence... **Rwy 21**, turn right, thence...

...climb to 6700 on OAB R-293, then climbing right turn direct OAB VOR/DME. Climb in OAB holding pattern (NW, left turns, 113° inbound) to 10000 then proceed on course.

NOTE: **Rwy 3**, tree 4383' from DER, 1507' right of centerline, 50' AGL/4729' MSL. Road 1749' from DER, 905' left of centerline, 15' AGL/4635' MSL. Tree 3914' from DER, 1166' right of centerline, 50' AGL/4690' MSL. Tree 1.25 NM from DER, 400' right of centerline, 50' AGL/4758' MSL. **Rwy 21**, pole 2026' from DER, 78' right of centerline, 80' AGL/4625' MSL. Pole 2061' from DER, 40' right of centerline, 80' AGL/4625' MSL. Pole 2095' from DER, 857' right of centerline, 80' AGL/4623' MSL. Pole 1980' from DER, 344' right of centerline, 80' AGL/4602' MSL.

NELLIS AFB (KLSV)

LAS VEGAS, NV

ORIG 12320

Rwy 3L/R, 10,200-3* SR-SS

Rwy 21L/R, 10,200-3* SR-SS

Diverse departure not authorized.

MILITARY: Use published DP, if unable to comply with DP climb gradient file appropriate DP for intended destination and notify clearance delivery and request RADAR Vectors (Climb Gradient of 300' per NM until 12,000 for RADAR Vectors). If unable to comply with RADAR Vector climb gradient, A/C must depart VFR.

* **CIVIL:** Use published DP, if unable to comply with DP climb gradient file appropriate DP for intended destination and notify clearance delivery and request RADAR Vectors (Climb Gradient of 330' per NM until 12,000 for RADAR Vectors). If unable to comply with RADAR Vectors climb gradient, A/C may use published weather minimums or depart VFR.

TAKE-OFF OBSTACLES: **RWY 3L:** Terrain 0' AGL/1869' MSL, 0' from DER, 303' left of centerline. Terrain 0' AGL/ 1870' MSL, 0' from DER, 500' left of centerline. Road 15' AGL/1914' MSL, 1322' from DER, 801' left of centerline. **RWY 3R:** C-5 on taxiway 65' AGL/1934' MSL, 1346' from DER, 821' right of centerline. Road 15' AGL/1994' MSL, 3930' from DER, 1403' right of centerline. **RWY 21L:** Trees 90' AGL/1929' MSL, 4596' from DER, 1595' right of centerline. Trees 90' AGL/ 1929' MSL, 4942' from DER, 540' right of centerline. Trees 60' AGL/1879' MSL, 931' from DER, 725' left of centerline. Trees 52' AGL/1881' MSL, 2069' from DER, 693' left of centerline. Trees 42' AGL/ 1863' MSL, 1642' from DER, 744' left of centerline. Trees 45' AGL/1861' MSL, 1377' from DER, 737' left of centerline. Trees 35' AGL/1855' MSL, 1011' from DER, 662' left of centerline. Trees 47' AGL/ 1868' MSL, 1846' from DER, 844' left of centerline. Trees 38' AGL/1858' MSL, 826' from DER, 760' left of centerline. Trees 60' AGL/1879' MSL, 948' from DER, 627' left of centerline. Trees 60' AGL/ 1879' MSL, 2722' from DER, 342' left of centerline. **RWY 21R:** Terrain 0' AGL/1834' MSL, 23' from DER, 471' right of centerline. Trees 90' AGL/1929' MSL, 4596' from DER, 596' right of centerline. Building 45' AGL/1884' MSL, 2276' from DER, 1036' right of centerline. Road 15' AGL/1854' MSL, 1406' from DER, 465' right of centerline. Terrain 0' AGL/ 1835' MSL, 0' from DER, 500' right of centerline. Building 38' AGL/1868' MSL, 2160' from DER, 1077' right of centerline. Tower 100' AGL/1938' MSL, 1462' from DER, 1135' right of centerline. Tower 100' AGL/1939' MSL, 1157' from DER, 1135' right of centerline.

24 JUL 2014 to 21 AUG 2014

24 JUL 2014 to 21 AUG 2014

14205



TAKEOFF MINIMUMS AND (OBSTACLE) DEPARTURE PROCEDURES



TAKEOFF MINIMUMS AND (OBSTACLE) DEPARTURE PROCEDURES

14205

NEPHI, UT

NEPHI MUNI (U14)

ORIG 11293 (FAA)

DEPARTURE PROCEDURE: Use NEPHI DEPARTURE.

NOGALES, AZ

NOGALES INTL (OLS)

AMDT 2 09351 (FAA)

TAKEOFF MINIMUMS: Use NOGALES DEPARTURE.

OGDEN, UT

OGDEN-HINCKLEY (OGD)

AMDT 2 08101 (FAA)

TAKEOFF MINIMUMS: **Rwys 7, 16**, NA- Obstacles.DEPARTURE PROCEDURE: **Rwys 3, 21, 25, 34**, Use EMONT DEPARTURE.

PAGE, AZ

PAGE MUNI (PGA)

AMDT 2 08045 (FAA)

TAKEOFF MINIMUMS: **Rwys 7, 25**, NA – obstacles**Rwy 15**, 300-1 or std. w/ min. climb of 252' per NM to 6500, or 1900-3 for climb in visual conditions.DEPARTURE PROCEDURE: **Rwy 15**, climb via 157° heading to 6000, then climbing right turn to PGA VOR/DME. cross PGA VOR/DME at or above 7700.Continue climb in PGA VOR/DME holding pattern (hold NW, right turns, 147° inbound) to airway MEA, or climb in visual conditions: cross Page airport at or above 6100, before proceeding on course. **Rwy 33**, climb via 337° heading to 6000, then climbing left turn to PGA VOR/DME. Cross PGA VOR/DME at or above 7700. Continue climb in PGA VOR/DME holding pattern (hold NW, right turns, 147° inbound) to airway MEA.NOTE: **Rwy 15**, terrain 192' from DER, 274' right of centerline, 4323' MSL, tree 1.07 NM from DER, 167' left of centerline, 4519 MSL, transmission lines 1.96 NM from DER, 825' left of centerline, 100' AGL/4519' MSL, power line 4.00 NM from DER, 3606' right of centerline, 75' AGL/4819' MSL, power line 4.35 NM from DER, 3968' right of centerline, 75' AGL/4919' MSL, power line 5.36 NM from DER, 5039' right of centerline, 75' AGL/5119' MSL, power line 4.51 NM from DER, 4136' right of centerline, 75' AGL/5019' MSL, tree 4.52 NM from DER, 1508' right of centerline, 100' AGL/5173' MSL, AAO 4.58 NM from DER, 1617' right of centerline, 200' AGL/5187' MSL, AAO 5.15 NM from DER, 4456' left of centerline, 200' AGL/5190' MSL, tree 5.56 NM from DER, 4097' right of centerline, 30' AGL/5249' MSL, AAO 5.98 NM from DER, 653' left of centerline, 200' AGL/5440' MSL.

PANGUITCH, UT

PANGUITCH MUNI (U55) ...

ORIG 11153 (FAA)

TAKEOFF MINIMUMS: **Rwy 18**, std. w/min. climb of 350' per NM to 9200 or 2200-3 for climb in visual conditions.**Rwy 36**, std. w/min. climb of 450' per NM to 9500 or 2200-3 for climb in visual conditions.DEPARTURE PROCEDURE: **Rwy 18**, climb heading 185° to 9200 then left turn to intercept BCE VORTAC R-274, continue climb to 12000 to BCE VORTAC, or for climb in visual conditions: cross Panguitch Muni Airport southeast bound at or above 8800' MSL then via BCE R-320 to BCE VORTAC thence ... **Rwy 36**, climb heading 005° to 9500 then left turn to intercept BCE VORTAC R-323 (V257), continue climb to 12000 to BCE VORTAC, or for climb in visual conditions: cross Panguitch Muni Airport southeast bound at or above 8800' MSL then via BCE R-320 to BCE VORTAC thence...

...continue climb in BCE VORTAC holding pattern (hold southwest, right turn, 045° inbound) to cross BCE VORTAC at or above MEA for route of flight.

NOTE: **Rwy 36**, terrain 64' from DER, 426' right of centerline, 6775' MSL. Terrain 426' from DER, 565' right of centerline, 6779' MSL. **Rwy 18**, terrain beginning 114' from DER, 306' left of centerline, 6758' MSL. Terrain 26' from DER, 229' left of centerline 6756' MSL. Terrain 388' from DER, 91' left of centerline 6766' MSL. Terrain 316' from DER, 321' left of centerline 6766' MSL.

PARKER, AZ

AVI SUQUILLA (P20)

ORIG 81106 (FAA)

TAKEOFF MINIMUMS: **Rwy 1**, 800-1½. **Rwy 19**, 300-1.DEPARTURE PROCEDURE: **Rwy 19**, right turn. **Rwy 1**, left turn. Climb via R-067 to PKE VORTAC, to cross above 4500. Continue climb on course to MEA or assigned altitude.

PAYSON, AZ

PAYSON (PAN)

AMDT 1A 12320 (FAA)

TAKEOFF MINIMUMS: **Rwy 6**, std. w/ min. climb of 360' per NM to 9300, or 2500-3 for climb in visual conditions.**Rwy 24**, std. w/ min. climb of 375' per NM to 9300, or 2500-3 for climb in visual conditions.DEPARTURE PROCEDURE: **Rwys 6, 24**, for climb in visual conditions: Cross Payson Airport at or above 7500 MSL before proceeding on course. When executing VCOA, notify ATC prior to departure.NOTE: **Rwy 6**, tree 197' from DER, 118' right of centerline, up to 12' AGL/5170' MSL. Bush 83' from DER, 99' right of centerline, up to 3' AGL/5161' MSL. **Rwy 24**, bush 15' from DER, 133' right of centerline, 6' AGL/5148' MSL. Tree 320' from DER, 183' right of centerline, 12' AGL/5154' MSL. Fence 85' from DER, 84' left of centerline, 4' AGL/5141' MSL. Tree 164' from DER, 126' left of centerline, 9' AGL/5147' MSL.

24 JUL 2014 to 21 AUG 2014

24 JUL 2014 to 21 AUG 2014

14205

TAKEOFF MINIMUMS AND (OBSTACLE) DEPARTURE PROCEDURES



TAKEOFF MINIMUMS AND (OBSTACLE) DEPARTURE PROCEDURES

14205

**PHOENIX, AZ**

PHOENIX-DEER VALLEY (DVT)

AMDT 5 05300 (FAA)

DEPARTURE PROCEDURE: Use DEER VALLEY DEPARTURE.

PHOENIX SKY HARBOR INTL (PHX)

AMDT 5 12320 (FAA)

TAKEOFF MINIMUMS: **Rwy 26**, 500-2¾ or std. w/ min. climb of 290' per NM to 1800.DEPARTURE PROCEDURE: **Rwys 7L, 7R, 8**, climb on 078° heading to 3000, then climbing right turn direct PXR VORTAC. **Rwys 25L, 25R**, climb on 258° heading to 1550 then climbing right turn to join PXR R-260 (V16) westbound, climb to 5000. **Rwy 26**, climb on 258° heading to 1550 then climbing left turn to join PXR R-260 (V16) westbound, climb to 5000.

Westbound departures continue climb on PXR R-260.

All others, climbing right turn direct PXR VORTAC.

NOTE: **Rwy 7R**, multiple transmission towers, 3202'from DER, 1122' right of centerline, up to 125' AGL/1260' MSL. **Rwy 8**, multiple light poles, beginning 2540' from DER, 900' left of centerline, up to 100' AGL/1234' MSL. Light pole, 1640' from DER, 794' right of centerline, 42' AGL/1177' MSL. **Rwy 25L**, multiple light poles, beginning 682' from DER, 521' left of centerline, up to 90' AGL/1201' MSL. Sign, 902' from DER, 711' left of centerline, 59' AGL/1170' MSL. **Rwy 25R**, tree, 1036' from DER, 666' right of centerline, 30' AGL/1140' MSL. **Rwy 26**, multiple electrical systems, beginning 43' from DER, 450' left and right of centerline, up to 33' AGL/1142' MSL. Multiple trees, beginning 118' from DER, 214' right of centerline, up to 24' AGL/1133' MSL. Obstruction light on blast fence, 176' from DER, 547' left of centerline, 9' AGL/1120' MSL. Sign, 520' from DER, 567' right of centerline, 14' AGL/1125' MSL. Pole, 82' from DER, 64' right of centerline, 18' AGL/1127' MSL. Multiple light poles, beginning 315' from DER, beginning 318' left of centerline, up to 60' AGL/1170' MSL. Multiple light poles, beginning 2302' from DER, beginning 193' right of centerline, up to 60' AGL/1171' MSL.**PHOENIX-MESA GATEWAY (IWA)**

AMDT 1 10042 (FAA)

DEPARTURE PROCEDURE: use PHOENIX DEPARTURE.

PRESCOTT, AZ

ERNEST A. LOVE FIELD (PRC)

AMDT 4 14093 (FAA)

DEPARTURE PROCEDURE: Use PRESCOTT DEPARTURE.

PRICE, UT

CARBON COUNTY RGNL/BUCK DAVIS FLD (PUC)

AMDT 4 09071 (FAA)

TAKEOFF MINIMUMS: **Rwy 7**, NA - per flight check **Rwy 32**, std. w/ min. climb of 425' per NM to 7000, or 3400-3 for climb in visual conditions. **Rwy 36**, std. w/ min. climb of 400' per NM to 7200, or 3400-3 for climb in visual conditions.DEPARTURE PROCEDURE: **Rwy 14**, climb on a heading between 126° CW to 193°, thence...**Rwy 18**, climb on a heading between 192° CCW to 125°, thence...**Rwy 25**, climb on a heading between 176° CCW to 124°, thence... **Rwy 32**, climb to 7000 then climbing left turn on a heading between 175° CCW to 145°, thence...**Rwy 36**, climb to 6400 then climbing right turn on a heading between 141° CW to 184°, maintain 210K until completion of turn, thence......continue climb to assigned altitude for direction of flight. **Rwys 32, 36**, for climb in visual conditions cross Carbon County Rgnl / Buck Davis Field at or above 9200 before proceeding on course.NOTE: **Rwy 14**, multiple trees beginning 121' from DER, 3' left of centerline, up to 40' AGL/5839' MSL. **Rwy 25**, trees 515' from DER, 535' right of centerline, up to 40' AGL/5879' MSL. **Rwy 32**, trees 9544' from DER, 1644' left of centerline, up to 40' AGL/6900' MSL. Trees 11332' from DER, 74' right of centerline, up to 40' AGL/6800' MSL. **Rwy 36**, poles 2599' from DER, 615' left of centerline, 40' AGL/6079' MSL. Poles 2715' from DER, 668' right of centerline, 59' AGL/6098' MSL.**PROVO, UT**

PROVO MUNI (PVU)

DEPARTURE PROCEDURE: Use PROVO DEPARTURE.

RENO, NV

RENO/STEAD (RTS)

AMDT 3A 09183 (FAA)

TAKEOFF MINIMUMS: CAT A,B only, CAT C,D NA. **Rwys 8,14**, 1300-2 or std. with a min. climb of 400' per NM to 6500. **Rwy 26**, 1900-2 or std. with a min. climb of 410' per NM to 7200. **Rwy 32**, 2300-2 or std. with a min. climb of 420' per NM to 7200.DEPARTURE PROCEDURE: **Rwys 8,32**, climbing right turn heading 100° and FMG VORTAC R-314 to FMG VORTAC. **Rwy 14**, left turn climb direct FMG VORTAC. **Rwy 26**, climbing right turn heading 050° and FMG VORTAC R-314 to FMG VORTAC. All aircraft climb in FMG VORTAC holding pattern (NE, right turns, 221° inbound) to depart FMG VORTAC; R-260 CW R-170 at or above 10000; R-171 CW R-195 at or above 10500; R-196 CW R-259 at or above 12000.

24 JUL 2014 to 21 AUG 2014

24 JUL 2014 to 21 AUG 2014

14205



TAKEOFF MINIMUMS AND (OBSTACLE) DEPARTURE PROCEDURES





14205

RENO, NV (CON'T)RENO/TAHOE INTL (RNO)
AMDT 4 07354 (FAA)

TAKEOFF MINIMUMS: **Rwy 7**, NA-terrain. **Rwy 16L**, std. w/ min. climb of 730' per NM to 8000, or 600-1½ w/ min. climb of 480' per NM to 8000, or 2700-3 for climb in visual conditions. **Rwy 16R**, std. w/ the following minimum climb requirements: 210 knots or less, 385' per NM to 8000; more than 210 knots, 420' per NM to 8900, or 2700-3 for climb in visual conditions. Resume normal speed after passing FMG VORTAC. **Rwy 25**, std. w/ min. climb of 470' per NM to 7800, or 2700-3 for climb in visual conditions. **Rwy 34L**, std. w/ min. climb of 320' per NM to 7000, or 2700-3 for climb in visual conditions. **Rwy 34R**, std. w/ min. climb of 480' per NM to 7000, or 500-1½ w/ min. climb of 320' per NM to 7000, or 2700-3 for climb in visual conditions.

DEPARTURE PROCEDURE: **Rwys 16L/R**, climb heading 164° to 6600 then climbing left turn direct FMG VORTAC, thence. . . or for climb in visual conditions: cross Reno/Tahoe Intl Airport at or above 7000 via heading 054° and FMG R-234 to FMG VORTAC, thence. . . **Rwy 25**, climb heading 254° to 5000 then climbing right turn direct FMG VORTAC, thence. . . or for climb in visual conditions: cross Reno/Tahoe Intl Airport at or above 7000 via heading 054° and FMG R-234 to FMG VORTAC, thence. . . **All aircraft**: continue climb in FMG VORTAC holding pattern (northeast, left turn, 221° inbound) to cross FMG VORTAC at or above MEA/MCA for route of flight.

NOTE: **Rwy 16L**, multiple poles, trees, bushes and terrain beginning 618' from DER, 133' left of centerline, up to 20' AGL/4961' MSL.

Rwy 16R, multiple trees 2784' from DER, 171' right of centerline, up to 20' AGL/4510' MSL. Multiple trees and terrain beginning 746' from DER, 380' left of centerline, up to 20' AGL/4703' MSL. **Rwy 25**, multiple trees and poles beginning 829' from DER, 201' right of centerline, up to 103' AGL/4523' MSL. Building 6023' from DER, 456' right of centerline, 152' AGL/4608' MSL. Fence 222' from DER, 270' right of centerline, up to 5' AGL/4415' MSL. Multiple trees and poles beginning 500' from DER, 31' left of centerline, up to 20' AGL/4506' MSL. **Rwy 34L**, multiple trees and poles beginning 1229' from DER, 180' right of centerline, up to 20' AGL/4498' MSL. Multiple trees beginning 1193' from DER, 331' left of centerline, up to 20' AGL/4489' MSL. **Rwy 34R**, multiple trees and poles beginning 1067' from DER, 172' right of centerline, up to 20' AGL/4497' MSL. Multiple trees and poles beginning 1230' from DER, 350' left of centerline, up to 20' AGL/4498' MSL. Building 1.2 NM from DER, 1730' right of centerline, 363' AGL/4780' MSL.

RICHFIELD, UTRICHFIELD MUNI (RIF)
AMDT 1 08157 (FAA)

DEPARTURE PROCEDURE: **Rwy 1**, use RICHFIELD (RNAV) DEPARTURE. **Rwy 19**, use HAMET (RNAV) DEPARTURE.

ROOSEVELT, UTROOSEVELT MUNI (74V)
AMDT 1 02108 (FAA)

TAKEOFF MINIMUMS: **Rwy 25**, 700-3 or std. with a min. climb of 300' per NM to 6100.
DEPARTURE PROCEDURE: **Rwy 7**, turn right. **Rwy 25**, turn left. **All aircraft**, climb direct MTU VORTAC. Aircraft departing MTU VORTAC R-040 CW R-150, climb on course. All others continue climb in MTU holding pattern (NE, right turns, 213° inbound) to cross MTU VORTAC; R-151 CW R-290 at or above 8000; R-291 CW R-039 at or above 10,000. Then climb on course.

SAFFORD, AZSAFFORD RGNL (SAD)
AMDT 1 10210 (FAA)

TAKEOFF MINIMUMS: **Rwys 8, 26**, NA - Airspace.
DEPARTURE PROCEDURE: **Rwys 12, 30**, use SAFFORD RNAV DEPARTURE.

ST. GEORGE, UTST. GEORGE MUNI (SGU)
ORIG 11013 (FAA)

DEPARTURE PROCEDURE: Use JITKA DEPARTURE.

ST. JOHNS, AZST. JOHNS INDUSTRIAL AIR PARK (SJNI)
AMDT 1A 08241 (FAA)

TAKEOFF MINIMUMS: **Rwy 21**, 400-2 or std. with a min. climb of 205' per NM to 6200.
DEPARTURE PROCEDURE: **Rwys 3, 32**, climbing right turn, **Rwys 14, 21**, climbing left turn. **All aircraft**, climb direct SJNI VORTAC. Aircraft departing SJNI VORTAC R-240 CW R-080 climb on course. All others continue climb in SJNI VORTAC holding pattern (Hold NE, right turns, 239° inbound) to cross SJNI VORTAC at or above 9000.

NOTE: **Rwy 14**, 5790' tower 350' right abeam DER.

24 JUL 2014 to 21 AUG 2014

24 JUL 2014 to 21 AUG 2014

14205





TAKEOFF MINIMUMS AND (OBSTACLE) DEPARTURE PROCEDURES

14205

SALT LAKE CITY, UT

SALT LAKE CITY INTL (SLC)

AMDT 11 10042 (FAA)

TAKEOFF MINIMUMS: **Rwy 32**, 400-1 or std. w/ min. climb of 498' per NM to 4700.

DEPARTURE PROCEDURE: **Rwy 14**, climb to 10000 via heading 189° and FFU R-341 to FFU VORTAC before proceeding on course. **Rwy 16R**, climb to 10000 via heading 161° and FFU R-341 to FFU VORTAC before proceeding on course. **Rwy 16L**, climb to 10000 via heading 161° and FFU R-341 to FFU VORTAC before proceeding on course. **Rwy 17**, climb to 10000 via heading 166° and FFU R-341 to FFU VORTAC before proceeding on course. **Rwy 32**, climb to 9,000 via heading 359° and OGD R-153 to OGD VORTAC before proceeding on course. **Rwy 34L**, climb to 9000 via heading 341° and OGD R-153 to OGD VORTAC before proceeding on course. **Rwy 34R**, climb to 9000 via heading 341° and OGD R-153 to OGD VORTAC before proceeding on course. **Rwy 35**, climb to 9000 via heading 336° and OGD R-153 to OGD VORTAC before proceeding on course.

NOTE: **Rwy 14**, antenna 1349' from DER, 544' left of centerline, 42' AGL/4263' MSL. **Rwy 16L**, vehicle on road 124' from DER, 14' right of centerline, 15' AGL/4239' MSL. Light pole 988' from DER, 726' right of centerline, 34' AGL/4254' MSL. Pole 1024' from DER, 689' right of centerline, 34' AGL/4254' MSL. **Rwy 17**, vehicles on road beginning 335' from DER, on centerline, up to 17' AGL/4241' MSL. **Rwy 32**, ATC tower 5266' from DER, 1767' left of centerline, 335' AGL/4549' MSL. Crane 5196' from DER, 1630' left of centerline, 240' AGL/4463' MSL. Flag on obstruction light 5153' from DER, 1619' left of centerline, 249' AGL/4463' MSL. Aircraft beginning 989' from DER, 722' left of centerline, up to 79' AGL/4306' MSL. **Rwy 34R**, post 13' from DER, 349' right of centerline, 3' AGL/4227' MSL. **Rwy 35**, post 56' from DER, 249' left of centerline, 2' AGL/4220' MSL.

SOUTH VALLEY RGNL (J42)

AMDT 5 11069 (FAA)

TAKEOFF MINIMUMS: **Rwy 16**, std. w/ a min. climb of 300' per NM to 10700. **Rwy 34**, std. with a min. climb of 330' per NM to 9000.

DEPARTURE PROCEDURE: **Rwy 16**, climbing left turn to 10700 on FFU R-341 to FFU VORTAC, continue climb in hold in FFU VORTAC holding pattern (hold South, right turns, 008° inbound) to cross FFU VORTAC at or above MEA for route of flight. **Rwy 34**, climbing right turn to 9000 on TCH R-161 to TCH VORTAC, continue climb in hold in TCH VORTAC holding pattern (hold Northwest, right turns, 120° inbound) to cross TCH VORTAC at or above MEA for route of flight.

NOTE: **Rwy 16**, bush 671' from DER, 490' right of centerline, up to 25' AGL/4629' MSL. Vehicles on road 692' from DER, right and left of centerline, up to 17' AGL/4626' MSL. Poles beginning 1000' from DER, 465' right of centerline, up to 30' AGL/4638' MSL.

SCOTTSDALE, AZ

SCOTTSDALE (SDL)

AMDT 8 10042 (FAA)

DEPARTURE PROCEDURE: **Rwys 3, 21**, use MARICOPA DEPARTURE.

SEDONA, AZ

SEDONA (SEZ)

AMDT 1 08101 (FAA)

TAKEOFF MINIMUMS: **Rwy 3**, NA- Obstacles.

DEPARTURE PROCEDURE: **Rwy 21**, Use OATES RNAV DEPARTURE.

SHOW LOW, AZ

SHOW LOW RGNL (SOW)

AMDT 1 11013 (FAA)

DEPARTURE PROCEDURE: **Rwy 3**, climb on heading 360° to 7800 before proceeding on course. **Rwy 6**, climb on heading 360° to 8100 before proceeding on course. **Rwy 21**, climb on heading 255° to 7700 before proceeding on course. **Rwy 24**, climb on heading 243° to 7600 before proceeding on course.

NOTE: **Rwy 3**, trees beginning 89' from DER, 429' left of centerline, up to 33' AGL/6413' MSL. **Rwy 21**, trees, tank, terrain, poles and buildings beginning 94' from DER, 5' left of centerline, up to 76' AGL/6519' MSL. Trees and terrain beginning 124' from DER, 25' right of centerline, up to 20' AGL/6431' MSL. **Rwy 24**, poles and catenary beginning 704' from DER, 4' left of centerline, up to 59' AGL/6439' MSL. Poles, catenary, electrical system, and terrain beginning 53' from DER, 78' right of centerline, up to 58' AGL/6438' MSL.

SPRINGVILLE, AZ

SPRINGVILLE MUNI (JTC)

ORIG 96228 (FAA)

TAKEOFF MINIMUMS: **Rwy 21**, 1000-2 or std. with a min. climb of 360' per NM to 8400.

DEPARTURE PROCEDURE: **Rwys 3, 11**, climbing left turn to 8400 via heading 360° before proceeding on course. **Rwys 21, 29**, climbing right turn to 8400 via 360° before proceeding on course.

TAYLOR, AZ

TAYLOR MUNI (TYL)

AMDT 1 11125 (FAA)

TAKEOFF MINIMUMS: **Rwy 21**, 300-1 or std. w/min. climb of 290' per NM to 6100.

DEPARTURE PROCEDURE: **Rwy 3**, climb heading 030° to 8000 before turning on course. **Rwy 21**, climb heading 210° to 8000 before turning on course.

NOTE: **Rwy 3**, vehicles on road beginning 1823' from DER, 698' right of centerline, up to 17' AGL/5726' MSL. Power lines crossing departure course 1000' from DER. **Rwy 21**, trees beginning 1132' from DER, 316' right of centerline, up to 12' AGL/5871' MSL.

TONOPAH, NV

TONOPAH (TPH)

AMDT 1 88350 (FAA)

TAKEOFF MINIMUMS: **Rwys 11, 29**, NA. **Rwys 15, 33**, 2600-2 or std. with a min. climb of 260' per NM to 8000.

DEPARTURE PROCEDURE: **Rwy 15**, turn left. **Rwy 33**, turn right. Climb direct TPH VORTAC. Continue climb in holding pattern (NE, right turns, 246° inbound) to depart TPH VORTAC at or above 8000. Climb on course to MEA or assigned altitude.

14205



TAKEOFF MINIMUMS AND (OBSTACLE) DEPARTURE PROCEDURES



TAKEOFF MINIMUMS AND (OBSTACLE) DEPARTURE PROCEDURES



14205

TONOPAH TEST RANGE (KTNX)

TONOPAH, NV. AMDT 1 12096
 DEPARTURE PROCEDURE: **Rwy 14:** 1000-3 with minimum climb of 320 ft/NM to 10,700 or 2700-3 for Climb in Visual Conditions. Climb on a heading between 325° CW to 155° from DER or Climb in Visual Conditions to cross KZ - KTNX airport at or above 8100 MSL before proceeding on course. **Rwy 32:** 1000-3 with minimum climb of 260 ft/NM to 5900 or 2700-3 for Climb in Visual Conditions. Climb on a heading between 295° CW to 005° from DER or Climb in Visual Conditions to cross KZ-KTNX airport at or above 8100 MSL before proceeding on course. TAKEOFF OBSTACLES: **Rwy 14,** Terrain, 5582' MSL, 1204' from DER, 823' right of centerline. Terrain, 5565' MSL, 63' from DER, 517' right of centerline. Terrain, 5564' MSL, 46' from DER, 480' right of centerline. Terrain, 5561' MSL, 0' from DER, 353' right of centerline. Terrain, 5558' MSL, 62' from DER, 200' right of centerline. Terrain, 5561' MSL, 14' from DER, 292' right of centerline. Terrain, 5561' MSL, 0' from DER, 287' right of centerline. Terrain, 5559' MSL, 0' from DER, 222' right of centerline. Surveyed terrain, 5560' MSL, 215' from DER, 427' right of centerline. **Rwy 32,** Terrain, 5476' MSL, 0' from DER, 500' left of centerline. Terrain, 5476' MSL, 19' from DER, 465' left of centerline. Terrain, 5476' MSL, 110' from DER, 529' left of centerline.

TOOELE, UT

BOLINDER FIELD-TOOELE VALLEY (TVY)
 AMDT 3 13234 (FAA)

TAKEOFF MINIMUMS: **Rwy 17,** std. w/min. climb of 348' per NM to 9000 or 5600-3 for climb in visual conditions. **Rwy 35,** std. w/min. climb of 380' per NM to 9000 or 5600-3 for climb in visual conditions.

DEPARTURE PROCEDURE: **Rwy 17,** climbing right turn to 9000 on heading 337° and OGD VORTAC R-197 to STACO INT, or for climb in visual conditions: cross Bolinder Field-Tooele Valley airport at or above 9800' MSL before proceeding on course. When executing VCOA, notify ATC prior to departure. **Rwy 35,** climbing left turn to 9000 on heading 300° and OGD VORTAC R-197 to STACO INT, or for climb in visual conditions: cross Bolinder Field-Tooele Valley airport at or above 9800' MSL before proceeding on course. When executing VCOA, notify ATC prior to departure.

NOTE: **Rwy 17,** tree 230' from DER, 255' right of centerline, 35' AGL/4335' MSL. Tree 342' from DER, 363' right of centerline, 35' AGL/4360' MSL. Trees beginning 601' from DER, 486' right of centerline, up to 35' AGL/4399' MSL. Pole 1000' from DER, 409' left of centerline, 42' AGL/4363' MSL. Pole 1092' from DER, 118' right of centerline, 42' AGL/4363' MSL. Tree 1369' from DER, 393' right of centerline, 35' AGL/4381' MSL. Tree 2018' from DER, 257' right of centerline, 35' AGL/4384' MSL.

TUCSON, AZ

RYAN FIELD (RYN)
 AMDT 3 10210 (FAA)
 TAKEOFF MINIMUMS: **Rwys 6L, 15, 24R, 33, NA,** ATC.
 DEPARTURE PROCEDURE: **Rwys 6R, 24L,** use ALMON DEPARTURE.

TUCSON INTL (TUS)

AMDT 5 12208 (FAA)
 TAKEOFF MINIMUMS: **Rwy 3,** 300-2 or std. w/min. climb of 228' per NM to 3000.
 DEPARTURE PROCEDURE: **Rwys 3, 29L/R,** climbing right turn direct to TUS VORTAC...
Rwy 21, climbing left turn direct to TUS VORTAC ...
Rwy 11L/R, climb heading 123° to 4000 then climbing left turn direct TUS VORTAC ...
 ... Climb in TUS VORTAC holding pattern (hold NW, right turns, 128° inbound) to 9000 before proceeding on course.

NOTE: **Rwy 3,** multiple trees and sign beginning 1385' from DER, 127' left of centerline, up to 41' AGL/2611' MSL. Tree 2062' from DER, 332' right of centerline, 46' AGL/2626' MSL. **Rwy 11L,** vents 115' from DER, 147' left and right of centerline, 6' AGL/2646' MSL. Multiple bushes beginning 449' from DER, 395' left of centerline, up to 24' AGL/2674' MSL. Multiple bushes beginning 188' from DER, 328' right of centerline, up to 13' AGL/2663' MSL. **Rwy 11R,** tree 584' from DER, 176' right of centerline, 25' AGL/2645' MSL. **Rwy 21,** bush 104' from DER, 256' left of centerline, 12' AGL/2572' MSL. RR 248' from DER, right to left of centerline, 23' AGL/2582' MSL. Bush 549' from DER, 384' left of centerline, 33' AGL/2583' MSL. Tree 701' from DER, 144' left of centerline, 37' AGL/2587' MSL. Pole 950' from DER, 166' left of centerline, 38' AGL/2588' MSL. Pole 1028' from DER, 89' left of centerline, 46' AGL/2599' MSL. Pole 1298' from DER, 594' left of centerline, 66' AGL/2616' MSL. Electrical system 1445' from DER, 319' left of centerline, 55' AGL/2605' MSL. Bush 1411' from DER, 330' right of centerline, 24' AGL/2574' MSL. Bush 454' from DER, 138' right of centerline, 26' AGL/2576' MSL. Electrical system 1176' from DER, 37' right of centerline, 48' AGL/2598' MSL. **Rwy 29L,** aircraft on ramp 2723' from DER, 348' left of centerline, up to 30' AGL/2680' MSL. **Rwy 29R,** aircraft on ramp 2779' from DER, 1056' left of centerline, up to 30' AGL/2680' MSL.

VERNAL, UT

VERNAL RGNL (VEL)
 TAKEOFF MINIMUMS: **Rwy 16,** 1500-2 or std with a min. climb of 250' per NM to 7000'. **Rwy 25,** 1500-2 or std. with a min. climb of 390' per NM to 7000'. **Rwy 34,** 1600-2 pr std. with a min. climb of 330' per NM to 7000'.
 DEPARTURE PROCEDURE: **Rwys 7,34,** turn right. **Rwys 16,25,** turn left. All aircraft climb direct VEL. Aircraft departing V391 S-bound climb on course. All others climb in holding pattern (SE, right turns, 322° inbound). Aircraft SW-bound V208 depart VEL at or above 8400', all others depart VEL at or above 9500'. Continue climb on course to MEA or assigned altitude.

24 JUL 2014 to 21 AUG 2014

24 JUL 2014 to 21 AUG 2014

14205



TAKEOFF MINIMUMS AND (OBSTACLE) DEPARTURE PROCEDURES



WENDOVER, UT

WENDOVER (ENV)
AMDT 5 00335 (FAA)

TAKEOFF MINIMUMS: **Rwy 26**, standard w/h a min. climb of 300' per NM to 7000. **Rwy 30**, NA.
DEPARTURE PROCEDURE: **Rwys 8,12, 26**, climbing left turn direct BVL VORTAC. Aircraft departing BVL VORTAC R-330 CW R-150 climb on course. All others continue climb in BVL VORTAC holding pattern (Hold NE right turns, 247° inbound) to cross at or above 7400, then climb on course.

WILLCOX, AZ

COCHISE COUNTY (P33)
AMDT 1 13122 (FAA)

TAKEOFF MINIMUMS: Use COCHISE DEPARTURE.

WINDOW ROCK, AZ

WINDOW ROCK (RQE)
AMDT 1 03191 (FAA)

TAKEOFF MINIMUMS: **Rwy 2**, 700-2 or std. with a min. climb of 500' per NM to 8000. **Rwy 20**, 600-2 or std. with a min. climb of 260' per NM to 8200.

DEPARTURE PROCEDURE: **Rwy 2**, turn right.

Rwy 20, turn left direct to GUP VORTAC before proceeding on course.

NOTE: **Rwy 2**, terrain 3832' from DER, 1025' right of centerline, 6926' MSL. Poles 5220' from DER, 245' right of centerline, 180' AGL/6922' MSL. Tower 7067' from DER, 3072' left of centerline, 71' AGL/7316' MSL. Terrain 7449' from DER, 1612' left of centerline, 6991' MSL. Terrain 8776' from DER, 1851' left of centerline, 7109' MSL. Tree 9665' from DER, 1326' right of centerline, 7340' MSL. Tree 11326' from DER, 355' left of centerline, 7351' MSL. **Rwy 20**, trees 1018' from DER, 620' left of centerline, 30' AGL/6768' MSL.

WINNEMUCCA, NV

WINNEMUCCA MUNI (WMC)
AMDT 1 87295 (FAA)

TAKEOFF MINIMUMS: **Rwy 2**, 2500-2 or std. with a min. climb of 450' per NM to 6800. **Rwys 14,20**, 3200-2 or std. with a min. climb of 520' per NM to 7500.

DEPARTURE PROCEDURE: **Rwys 14,20**, turn right.

Rwy 2, turn left. **Rwy 32**, climb straight ahead. All aircraft climb via INA R-326 to 6700 or above within 12 NM, then climbing left turn return to INA VOR/DME via R-326. Continue climb in INA VOR/DME holding pattern (hold NW, right turns, 146° inbound) to depart INA VOR/DME at or above 11000. Southbound aircraft continue via INA R-146 direct Fesko Int. Northbound aircraft continue via INA R-326 and SDO R-144 direct SDO VORTAC.

YUMA MCAS/ YUMA INTL (KNYL)

YUMA, AZ 09323

Diverse departures not auth between 360° CW 055° from 25 NM to 30 NM.

Rwy 3L: Cross DER at or above 35' AGL/228' MSL. Diverse departures auth. Fr 083° CW 107°, std with minimum climb of 225'/NM to 3500'.

Rwy 3R: Cross DER at or above 35' AGL/242' MSL. Diverse departures auth. Fr 083° CW 107°, std with minimum climb of 225'/NM to 3500'.

Rwy 21L: Cross DER at or above 35' AGL/223' MSL. Diverse departures auth.

Rwy 21R: Cross DER at or above 35' AGL/227' MSL. Diverse departures auth.

Rwy 8: Cross DER at or above 35' AGL/231' MSL. Diverse departures auth. Fr 069° CW 123°, std with minimum climb of 230'/NM to 3500'.

Rwy 26: Cross DER at or above 35' AGL/230' MSL. Diverse departures auth.

Rwy 17: Cross DER at or above 35' AGL/217' MSL. Diverse departures auth. Fr 068° CW 109°, std with minimum climb of 220'/NM to 3500'.

Rwy 35: Cross DER at or above 35' AGL/231' MSL. Diverse departures auth.

24 JUL 2014 to 21 AUG 2014

24 JUL 2014 to 21 AUG 2014