

[Airports](#)
[Nav aids](#)
[Airspace Fixes](#)
[Aviation Fuel](#)
[Hotels](#)
[iPhone App](#)
[My AirNav](#)
1556 users online [LOGIN](#)

## KDYT Sky Harbor Airport

Duluth, Minnesota, USA



**GOING TO DULUTH?**

[Reserve a Hotel Room](#)

## FAA INFORMATION EFFECTIVE 13 SEPTEMBER 2018

[Loc](#) | [Ops](#) | [Rwys](#) | [IFR](#) | [FBO](#) | [Links](#)  
[Com](#) | [Nav](#) | [Svcs](#) | [Stats](#) | [Notes](#)

### Location

FAA Identifier: DYT

Lat/Long: 46-43-18.6990N / 092-02-36.3800W

46-43.311650N / 092-02.606333W

46.7218608 / -92.0434389

(estimated)

Elevation: 610.5 ft. / 186.1 m (surveyed)

Variation: 01E (1995)

From city: 6 miles SE of DULUTH, MN

Time zone: UTC -5 (UTC -6 during Standard Time)

Zip code: 55802

### Airport Operations

Airport use: Open to the public

Control tower: no

ARTCC: MINNEAPOLIS CENTER

FSS: PRINCETON FLIGHT SERVICE STATION

NOTAMs facility: DYT (NOTAM-D service available)

Attendance: 0800-1700

Wind indicator: lighted

Segmented circle: no

Lights: MIRLS PRESET TO LOW SS-SR; TO ACTVT  
 REIL RWY 14, 32; PAPI RWY 32; MIRL RWY  
 14/32 - CTAF.

Beacon: white-green (lighted land airport)

Operates sunset to sunrise.

International operations: international airport of entry

### Airport Communications

CTAF/UNICOM: 122.7



[Click Here](#)

# BOOK A ROOM

**20 hotels within  
20 minutes of KDYT**

**Hotel Loyalty Points  
All Programs**

**Promotional launch prize:  
Win up to \$5,000!**



WX AWOS-3: 119.275 (218-720-4886)  
 DULUTH APPROACH: 125.45  
 DULUTH DEPARTURE: 125.45  
 CLEARANCE DELIVERY: 124.8 0600-2300  
 WX AWOS-3 at SUW (2.9 nm SW): 120.35 (715-394-0283)  
 WX ASOS at DLH (9 nm NW): PHONE [218-723-8340](tel:218-723-8340)  
 WX AWOS-3 at COQ (19 nm W): 118.525 (218-879-0783)

Road maps at: [MapQuest](#) [Bing](#) [Google](#)

**Aerial photo**

**WARNING:** Photo may not be current or correct



Photo by Vicki Eifert  
 Photo taken 28-May-2018  
 looking north.

**Nearby radio navigation aids**

**VOR radial/distance**      **VOR name**   **Freq**   **Var**  
[DLH](#)r121/8.1      DULUTH VORTAC   112.60   05E

**NDB name**      **Hdg/Dist**   **Freq**   **Var**   **ID**  
[PYKLA](#)      120/14.8   379   00E   DL   - . . . - . . .  
[CLOQUET](#)      086/19.0   335   01W   COQ   - . . . - - - - - . . .  
[MOOSE LAKE](#)   058/36.4   362   02E   MZH   - - - - . . . . . . . .

Do you have a better or more recent aerial photo of Sky Harbor Airport that you would like to share? If so, please [send us your photo](#).

**Airport Services**

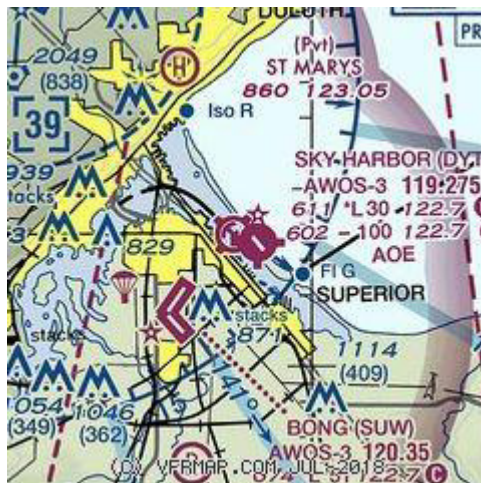
- Fuel available: 100LL  
 FUEL AVAIL 24 HRS WITH CREDIT CARD.
- Parking: tie-downs
- Airframe service: MAJOR
- Powerplant service: MAJOR
- Bottled oxygen: NONE
- Bulk oxygen: NONE

**Runway Information**

**Runway 14/32**

Dimensions: 3049 x 75 ft. / 929 x 23 m	
Surface: asphalt, in poor condition	
CRACKS IN RY CAUSE ROUGH RIDE.	
Runway edge lights: medium intensity	
<b>RUNWAY 14</b>	<b>RUNWAY 32</b>
Latitude: 46-43.498830N	46-43.124607N
Longitude: 092-02.849105W	092-02.363537W
Elevation: 605.2 ft.	607.3 ft.
Traffic pattern: left	left
Runway heading: 137 magnetic, 138 true	317 magnetic, 318 true
Displaced threshold: no	658 ft.
Declared distances: TORA:3049	TORA:3049
TODA:3049	TODA:3049
ASDA:2809	ASDA:2658
LDA:2418	LDA:2000
Markings: basic, in good condition	basic, in good condition
Visual slope indicator: 4-light PAPI on left	4-light PAPI on left

**Sectional chart**



**Airport distance calculator**

Flying to Sky Harbor Airport? Find the distance to fly.

From  to KDYT

**Sunrise and sunset**

*Times for 21-Sep-2018*

	<b>Local (UTC-5)</b>	<b>Zulu (UTC)</b>
Morning civil twilight	06:24	11:24
Sunrise	06:55	11:55
Sunset	19:08	00:08
Evening civil twilight	19:38	00:38

**Current date and time**

**Zulu (UTC)**      21-Sep-2018 15:39:19  
**Local (UTC-5)**      21-Sep-2018 10:39:19

	(4.00 degrees glide path) RWY 14 PAPI OTS.	(4.00 degrees glide path)
Runway end identifier lights:	yes	yes
Touchdown point:	yes, no lights	yes, no lights
Obstructions:	none	43 ft. tree, 676 ft. from
	APCH SLOPE TO DISPL THRESHOLD BETTER THAN 20:1.	runway, 118 ft. right of centerline, 10:1 slope to clear

**METAR**

**KDYT** 211515Z AUTO 30019G28KT 10SM BKN034 BKN060 OVC095 11/07 A2990 RMK AO2

**KDLH** 211455Z 32015G26KT 10SM -RA 10nm NW OVC019 08/05 A2986 RMK AO2 PK WND 30034/1406 PRESRR SLP117 P0000 60000 T00830050 53076

**KCOQ** 211515Z AUTO 31013G25KT 10SM 19nm W BKN020 OVC031 08/05 A2992 RMK AO2

**KSUW** 211515Z AUTO 31015G23KT 10SM 19nm S BKN028 OVC033 10/05 A2991 RMK AO2 T00950053

**TAF**

**KDLH** 211137Z 2112/2212 31016G28KT 10nm NW 6SM -RA BR OVC010 FM211500 32018G30KT P6SM VCSH OVC015 FM211700 33018G28KT P6SM SCT015 BKN040 FM220000 29007KT P6SM FEW250

**Runway 13W/31W**

Dimensions: 10000 x 2000 ft. / 3048 x 610 m

Surface: water

**RUNWAY 13W**

Elevation: 602.0 ft.

WATER RWY 9W/27W & 13W/31W ELEV 602 FT.

Traffic pattern: left


**RUNWAY 31W**

Elevation: 602.0 ft.

WATER RWY 9W/27W & 13W/31W ELEV 602 FT.

left

**NOTAMs**

 [Click for the latest NOTAMs](#)  
NOTAMs are issued by the DoD/FAA and will open in a separate window not controlled by AirNav.

**Runway 9W/27W**

Dimensions: 5000 x 1500 ft. / 1524 x 457 m

Surface: water

**RUNWAY 9W**

Elevation: 602.0 ft.

WATER RWY 9W/27W & 13W/31W ELEV 602 FT.

Traffic pattern: left

**RUNWAY 27W**

Elevation: 602.0 ft.

WATER RWY 9W/27W & 13W/31W ELEV 602 FT.

left

**Airport Ownership and Management from official FAA records**

Ownership: Publicly-owned

Owner: DULUTH ARPT AUTHORITY  
DULUTH INTL ARPT, 4701 GRINDEN DRIVE  
DULUTH, MN 55811  
Phone [218-727-2968](tel:218-727-2968)

Manager: BRIAN MADSEN  
DULUTH ARPT AUTHORITY, 5000 MINNESOTA AVENUE STE. 1  
DULUTH, MN 55802  
Phone [\(218\) 733-0078](tel:218-733-0078)  
EMAIL ADDRESS:  
BMADSEN@DULUTHAIRPORT.COM (ALL LOWER CASE)

**Airport Operational Statistics**

Aircraft based on the field: 26      Aircraft operations: avg 38/day \*  
 Single engine airplanes: 23      79% local general aviation  
 Multi engine airplanes: 3      15% transient general aviation  
    6% air taxi

\* for 12-month period ending 30 April 2018

## Additional Remarks

- FOR SEA PLANE OPS BE ALERT FOR EXTSV WATER SPORT ACTIVITIES IN LAKE SUPERIOR BAY.
- TREES OBSC AREA 32 EAST OF RWY CNTRLN.
- BE ALERT: EXTENSIVE ACFT ACTIVITY INVOF RICHARD I. BONG ARPT 2 MI 'SW'.
- RWY 32 TREES 79 FT, 773 FT FM END, 272 FT RIGHT, LGTD.
- WIND SURFING ACTIVITY IN VICINITY OF SEALANES MAY THRU SEPT.
- BIRDS ON AND INVOF ARPT.

## Instrument Procedures

There are no published instrument procedures at KDYT.

Some nearby airports with instrument procedures:

[KSUW](#) - Richard I Bong Airport (3 nm SW)


[KDLH](#) - Duluth International Airport (9 nm NW)

[KCOQ](#) - Cloquet/Carlton County Airport (19 nm W)

[KTWM](#) - Richard B Helgeson Airport (23 nm NE)

[KOLG](#) - Solon Springs Municipal Airport (26 nm S)

## FBO, Fuel Providers, and Aircraft Ground Support

Business Name	Contact	Services / Description	Fuel Prices	Comments
		no information available		
Duluth Airport Authority	<a href="tel:218-733-0078">218-733-0078</a>	If you are affiliated with Duluth Airport Authority and would like to show here your services, contact info, web link, logo, and more, <a href="#">click here</a>	100LL AS \$5.09 Updated 12-Sep-2018	not yet rated 1 <a href="#">read</a> <a href="#">write</a>
		AS= <a href="#">Assisted/Self Service</a>		
				

## Where to Stay: Hotels, Motels, Resorts, B&Bs, Campgrounds

The hotels featured here are reported to be very convenient to the Sky Harbor Airport. If your hotel/inn/B&B/resort is near the Sky Harbor Airport, provides convenient transportation, or is otherwise attractive to pilots, flight crews, and airport users, consider listing it here.

Business Name	Contact	Services / Description	Distance	Comments
<a href="#">South Pier Inn</a>	<a href="tel:218-786-9007">218-786-9007</a> toll-free 1-800-430-7437 <a href="#">[web site]</a> <a href="#">[email]</a> <a href="#">[Reservations]</a>	Internet access, Lodging  	4 miles	not yet rated <a href="#">write</a>



## Would you like to see your business listed on this page?

If your business provides an interesting product or service to pilots, flight crews, aircraft, or users of the Sky Harbor Airport, you should consider listing it here. To start the listing process, click on the button below

▼ ADD YOUR BUSINESS OR SERVICE

## Other Pages about Sky Harbor Airport

▼ PDF page(s) from the Minnesota Airport Directory (seaplane base)

▼ UPDATE, REMOVE OR ADD A LINK

Copyright © AirNav, LLC. All rights reserved.

[Privacy Policy](#) [Contact](#)