

# TAKEOFF MINIMUMS, (OBSTACLE) DEPARTURE PROCEDURES, AND DIVERSE VECTOR AREA (RADAR VECTORS)

18032

## INSTRUMENT APPROACH PROCEDURE CHARTS



### IFR TAKEOFF MINIMUMS AND (OBSTACLE) DEPARTURE PROCEDURES

#### Civil Airports and Selected Military Airports

ALL USERS: Airports that have Departure Procedures (DPs) designed specifically to assist pilots in avoiding obstacles during the climb to the minimum enroute altitude, and/or airports that have civil IFR takeoff minimums other than standard, are listed below. Takeoff Minimums and Departure Procedures apply to all runways unless otherwise specified. An entry may also be listed that contains only Takeoff Obstacle Notes. Altitudes, unless otherwise indicated, are minimum altitudes in MSL.

DPs specifically designed for obstacle avoidance are referred to as Obstacle Departure Procedures (ODPs) and are textually described below, or published separately as a graphic procedure. If the ODP is published as a graphic procedure, its name will be listed below, and it can be found in either this volume (civil), or the applicable military volume, as appropriate. Users will recognize graphic obstacle DPs by the term "(OBSTACLE)" included in the procedure title; e.g., TETON TWO (OBSTACLE). If not specifically assigned an ODP, SID, or radar vector as part of an IFR clearance, an ODP may be required to be flown for obstacle clearance, even though not specifically stated in the IFR clearance. When doing so in this manner, ATC should be informed when the ODP being used contains a specified route to be flown, restrictions before turning, and/or altitude restrictions.

Some ODPs, which are established solely for obstacle avoidance, require a climb in visual conditions to cross the airport, a fix, or a NAVAID in a specified direction, at or above a specified altitude. These procedures are called Visual Climb Over Airport (VCOA). To ensure safe and efficient operations, the pilot must verbally request approval from ATC to fly the VCOA when requesting their IFR clearance.

At some locations where an ODP has been established, a diverse vector area (DVA) may be created to allow radar vectors to be used in lieu of an ODP. DVA information will state that headings will be as assigned by ATC and climb gradients, when applicable, will be published immediately following the specified departure procedure.

Graphic DPs designed by ATC to standardize traffic flows, ensure aircraft separation and enhance capacity are referred to as "Standard Instrument Departures (SIDs)". SIDs also provide obstacle clearance and are published under the appropriate airport section. ATC clearance must be received prior to flying a SID.

CIVIL USERS NOTE: Title 14 Code of Federal Regulations Part 91 prescribes standard takeoff rules and establishes takeoff minimums for certain operators as follows: (1) For aircraft, other than helicopters, having two engines or less – one statute mile visibility. (2) For aircraft having more than two engines – one-half statute mile visibility. (3) For helicopters – one-half statute mile visibility. These standard minima apply in the absence of any different minima listed below.

MILITARY USERS NOTE: Civil (nonstandard) takeoff minima are published below. For military takeoff minima, refer to appropriate service directives.

NAME	TAKEOFF MINIMUMS	NAME	TAKEOFF MINIMUMS
------	------------------	------	------------------

#### APPLE VALLEY, CA

##### APPLE VALLEY (APV)

TAKEOFF MINIMUMS AND (OBSTACLE)

DEPARTURE PROCEDURES

AMDT 1 00167 (FAA)

TAKEOFF MINIMUMS: **Rwy 36**, 300-1 or std. with a min. climb gradient of 340' per NM to 5800.

**Rwys 8,18,26**, NA.

DEPARTURE PROCEDURE: Use EXCON ONE

RNAV DEPARTURE. **Rwys 8,18,26**, NA.

#### AVALON, CA

##### CATALINA (AVX)

TAKEOFF MINIMUMS AND (OBSTACLE)

DEPARTURE PROCEDURES

DEPARTURE PROCEDURE: **Rwys 4,22**, climb straight ahead to 2300 then proceed on course.

01 MAR 2018 to 29 MAR 2018

01 MAR 2018 to 29 MAR 2018

# TAKEOFF MINIMUMS, (OBSTACLE) DEPARTURE PROCEDURES, AND DIVERSE VECTOR AREA (RADAR VECTORS)

18032

## BAKERSFIELD, CA

### BAKERSFIELD MUNI (L45)

TAKEOFF MINIMUMS AND (OBSTACLE)  
DEPARTURE PROCEDURES

AMDT 2 14037 (FAA)

TAKEOFF MINIMUMS: **Rwy 34**, 400-1¼ or std. with a min. climb of 555' per NM to 900.

DEPARTURE PROCEDURE: **Rwy 16**, climbing right turn direct EHF VORTAC, thence...

**Rwy 34**, climbing left turn direct EHF VORTAC, thence...

... Aircraft departing EHF VORTAC R-180 CW R-360 climb on course, aircraft departing EHF VORTAC R-001 CW R-100 continue climb in EHF VORTAC holding pattern (hold NW, right turns, 144° inbound) to cross EHF VORTAC at or above 5200 then proceed on course, aircraft departing EHF VORTAC R-101 CW R-179 continue climb in EHF VORTAC holding pattern (hold NW, right turns, 144° inbound) to cross EHF VORTAC at or above 4100 then proceed on course.

TAKEOFF OBSTACLE NOTES: **Rwy 16**, light pole 168' from DER, 498' left of centerline, 26' AGL/400' MSL. Tree 395' from DER, 491' left of centerline, 40' AGL/400' MSL.

Powerlines beginning 546' from DER, 608' right of centerline, 120' AGL/474' MSL. Pole 644' from DER, 474' left of centerline, 30' AGL/403' MSL. Trees beginning 1603' from DER, 196' right of centerline, up to 40' AGL/453' MSL. Obstruction light on transmission tower 2464' from DER, 780' left of centerline, 106' AGL/477' MSL. Catenary 2486' from DER, 484' left of centerline, 106' AGL/477' MSL. Catenary 2529' from DER, 725' right of centerline, 111' AGL/483' MSL. Obstruction light on transmission tower 2539' from DER, 214' right of centerline, 107' AGL/478' MSL. Catenary 2540' from DER, 482' right of centerline, 111' AGL/482' MSL. **Rwy 34**, trees beginning 604' from DER, 341' right of centerline, 40' AGL/419' MSL. Tower 5100' from DER, 1646' right of centerline, 266' AGL/656' MSL. Vehicles on road 764' from DER, 499' left of centerline, up to 15' AGL/399' MSL. Hanger 372' from DER, 545' left of centerline, 20' AGL/404' MSL.

## MEADOWS FIELD (BFL)

TAKEOFF MINIMUMS AND (OBSTACLE)  
DEPARTURE PROCEDURES

AMDT 3 16147 (FAA)

DEPARTURE PROCEDURE: **All aircraft** climbing right turn direct EHF VORTAC. Aircraft departing EHF R-180 CW R-350 climb on course. All others continue climb northwest bound via EHF R-324, then climbing left turn to cross EHF VORTAC at or above: EHF R-110 CW R-179 3000; EHF R-351 CW R-109 4000.

TAKEOFF OBSTACLE NOTES: **Rwy 12L**, trees beginning 2221' from DER, 684' left of centerline, up to 72' AGL/546' MSL. Ground 146' from DER, 525' left of centerline, 479' MSL. **Rwy 12R**, tree 2612' from DER, 1158' left of centerline, 69' AGL/533' MSL. Trees beginning 456' from DER, 575' right of centerline, up to 46' AGL/510' MSL. Fence 14' from DER, 215' right of centerline, 4' AGL/466' MSL. **Rwy 30R**, pole 1248' from DER, 113' left of centerline, 31' AGL/543' MSL. Transmission tower 3632' from DER, 1097' left of centerline, 94' AGL/602' MSL. Poles beginning 2297' from DER, 925' right of centerline, up to 36' AGL/577' MSL. Pump 529' from DER, 538' right of centerline, 5' AGL/523' MSL. Building 373' from DER, 257' right of centerline, 10' AGL/524' MSL. Towers beginning 4350' from DER, 499' right of centerline, up to 110' AGL/650' MSL. NAVAID 388' from DER, 266' right of centerline, 21' AGL/535' MSL. Tree 3252' from DER, 1072' right of centerline, 101' AGL/610' MSL.

## BIG BEAR CITY, CA

### BIG BEAR CITY (L35)

TAKEOFF MINIMUMS AND (OBSTACLE)  
DEPARTURE PROCEDURES

ORIG 00111 (FAA)

TAKEOFF MINIMUMS: **Rwy 8**, 1200-2 or std. with a min. climb of 282' per NM to 8000. **Rwy 26**, NA.

DEPARTURE PROCEDURE: Use OKACO RNAV DEPARTURE. **Rwy 26**, NA.

## BLYTHE, CA

### BLYTHE (BLH)

TAKEOFF MINIMUMS AND (OBSTACLE)  
DEPARTURE PROCEDURES

AMDT 1A 13234 (FAA)

TAKEOFF MINIMUMS: **Rwy 26**, 600-2½ or std. with a min. climb of 348' per NM to 1200.

DEPARTURE PROCEDURE: **Rwys 8,17,35**, turn right. **Rwy 26**, turn left, climb to 1500 via heading 180° and BLH R-120, then climbing left turn direct BLH VORTAC, MCA 2000.

TAKEOFF OBSTACLE NOTES: **Rwy 26**, tower 2.4 NM from DER, 991' left of centerline, 159' AGL/957' MSL.

## BORREGO SPRINGS, CA

### BORREGO VALLEY (L08)

TAKEOFF MINIMUMS AND (OBSTACLE)  
DEPARTURE PROCEDURES

AMDT 2 08101 (FAA)

DEPARTURE PROCEDURE: Use ZUNGU DEPARTURE (RNAV).

## BRAWLEY, CA

### BRAWLEY MUNI (BWC)

TAKEOFF MINIMUMS AND (OBSTACLE)  
DEPARTURE PROCEDURES

AMDT 1 17089 (FAA)

TAKEOFF MINIMUMS: **Rwy 26**, NA-Obstacles and noise abatement.

DEPARTURE PROCEDURES: **Rwy 8**, climbing right turn heading 120° to intercept IPL VORTAC R-009 to 3000 to IPL VORTAC, then climb on course.

TAKEOFF OBSTACLE NOTES: **Rwy 8**, trees, beginning 81' from DER, 314' left of centerline, up to -106' MSL. Trees, beginning 274' from DER, 441' right of centerline, up to -124' MSL. Vehicles on road, beginning 380' from DER, 348' right of centerline, up to -116' MSL. Trees, beginning 457' from DER, 362' left of centerline, up to -96' MSL. Tree 458' from DER, 406' left of centerline, -94' MSL.

01 MAR 2018 to 29 MAR 2018

01 MAR 2018 to 29 MAR 2018

# TAKEOFF MINIMUMS, (OBSTACLE) DEPARTURE PROCEDURES, AND DIVERSE VECTOR AREA (RADAR VECTORS)

18032

SW-3



## TAKEOFF MINIMUMS, (OBSTACLE) DEPARTURE PROCEDURES, AND



18032

## DIVERSE VECTOR AREA (RADAR VECTORS)

## BURBANK, CA

## BOB HOPE (BUR)

TAKEOFF MINIMUMS AND (OBSTACLE)

DEPARTURE PROCEDURES

AMDT 5 11209 (FAA)

TAKEOFF MINIMUMS: **Rwy 8**, std. w/min. climb of 410' per NM to 5000. **Rwy 15**, std. w/min. climb of 335' per NM to 5000. **Rwy 26**, std. w/min. climb of 325' per NM to 5000. **Rwy 33**, std. w/min. climb of 550' per NM to 5000' or 600-2¼ w/min. climb of 300' per NM to 5000.

DEPARTURE PROCEDURE: **Rwys 8, 15**, climbing right turn direct VNY VOR/DME. **Rwy 26**, climb direct VNY VOR/DME. **Rwy 33**, Climbing left turn direct VNY VOR/DME.

All aircraft continue climb in VNY holding pattern (SE, left turns, 295° inbound) to cross VNY VOR/DME at or above 5100, then westbound on V326 to GINNA or eastbound on V186 to DARTS.

TAKEOFF OBSTACLE NOTES: **Rwy 8**, multiple trees, poles, and buildings beginning 124' from DER, 42' right of centerline, up to 65' AGL/745' MSL. Multiple trees, buildings and poles beginning 278' from DER, 73' left of centerline, up to 56' AGL/746' MSL. **Rwy 15**, multiple trees, buildings, poles, and blast fence beginning 50' from DER, 2' right of centerline, up to 65' AGL/762' MSL. Multiple trees, buildings, poles, blast fence beginning 185' from DER, 53' left of centerline, up to 108' AGL/777' MSL. **Rwy 26**, multiple trees, poles, transmission towers, buildings, and roads, and terrain beginning 26' from DER, 4' right of centerline, up to 145' AGL/731' MSL. Multiple trees, poles, transmission towers, railroad, and buildings beginning 302' from DER, 437' left of centerline, up to 117' AGL/846' MSL. **Rwy 33**, multiple trees, poles, terrain, buildings, road beginning 33' from DER, 30' right of centerline, up to 100' AGL/1333' MSL. Multiple trees, poles, buildings, antenna, railroad, and blast fence beginning 97' from DER, 11' left of centerline, up to 50' AGL/878' MSL.

DIVERSE VECTOR AREA (RADAR VECTORS)

ORIG 16147 (FAA)

**Rwy 8**, heading as assigned by ATC; requires minimum climb of 420' per NM to 2500. **Rwy 15**, heading as assigned by ATC; requires minimum climb of 340' per NM to 2100. **Rwy 26**, heading as assigned by ATC; requires minimum climb of 380' per NM to 4800. **Rwy 33**, heading as assigned by ATC; requires minimum climb of 460' per NM to 4900.

## CALIFORNIA CITY, CA

## CALIFORNIA CITY MUNI (L71)

TAKEOFF MINIMUMS AND (OBSTACLE)

DEPARTURE PROCEDURES

ORIG 05076 (FAA)

DEPARTURE PROCEDURE: Use CALIFORNIA CITY (RNAV) DEPARTURE.

## CALIPATRIA, CA

## CLIFF HATFIELD MEMORIAL (CLR)

TAKEOFF MINIMUMS AND (OBSTACLE)

DEPARTURE PROCEDURES

ORIG-A 17285 (FAA)

DEPARTURE PROCEDURE: **Rwy 8**, climb runway heading to 400, then climbing right turn to 3000 via heading 200° and IPL R-336 to IPL VORTAC. **Rwy 26**, climb runway heading to 400, then climbing left turn to 3000 via IPL R-336 to IPL VORTAC.

TAKEOFF OBSTACLE NOTES: **Rwy 8**, pole 525' from DER, 140' right of centerline, 15' AGL/-166' MSL. Poles beginning 616' from DER, 204' right of centerline, 15' AGL/-165' MSL. Building, pole beginning 748' from DER, 307' right of centerline, 25' AGL/-155' MSL. Transmission line 838' from DER, 150' right of centerline, 31' AGL/-150' MSL. **Rwy 26**, pole 190' from DER, 329' right of centerline, -152 MSL. Road 223' from DER, on centerline -170' MSL. Tree 328' from DER, 484' left of centerline, -155' MSL. Tree 541' from DER, 634' right of centerline, -125' MSL. Pole 1103' from DER, 582' right of centerline, -140' MSL. Antenna 1444' from DER, 565' left of centerline, -131' MSL.

## CAMARILLO, CA

## CAMARILLO (CMA)

TAKEOFF MINIMUMS AND (OBSTACLE)

DEPARTURE PROCEDURES

AMDT 4 16315 (FAA)

DEPARTURE PROCEDURE: **Rwy 8**, climbing left turn to 2500 on CMA VOR/DME R-058 thence. . . . **Rwy 26**, climb to 2500 on CMA VOR/DME R-265 thence. . . .  
. . . . Climbing left turn direct CMA VOR/DME before proceeding on course.

CAMP PENDLETON MCAS (MUNN FIELD)  
(KNFG)

## OCEANSIDE, CA

TAKEOFF MINIMUMS AND (OBSTACLE)

DEPARTURE PROCEDURES

14149

DEPARTURE PROCEDURE: **Rwys 3,21**, Diverse departures not authorized.

TAKEOFF OBSTACLE NOTES: **Rwy 3**, terrain 4103' from DER, 1600' left of centerline, 183' MSL. Terrain 4152' from DER, 1551' left of centerline, 187' MSL. Numerous palm trees beginning 2088' from DER, 572' right of centerline, up to 155' MSL. **Rwy 21**, terrain 3723' from DER, 1497' left of centerline, 184' MSL. Terrain 3533' from DER, 1446' left of centerline, 166' MSL.

01 MAR 2018 to 29 MAR 2018

01 MAR 2018 to 29 MAR 2018



## TAKEOFF MINIMUMS, (OBSTACLE) DEPARTURE PROCEDURES, AND



18032

## DIVERSE VECTOR AREA (RADAR VECTORS)

SW-3



## TAKEOFF MINIMUMS, (OBSTACLE) DEPARTURE PROCEDURES, AND



18032

## DIVERSE VECTOR AREA (RADAR VECTORS)

## CARLSBAD, CA

MC CLELLAN-PALOMAR (CRQ)  
TAKEOFF MINIMUMS AND (OBSTACLE)  
DEPARTURE PROCEDURES  
AMDT 5 16203 (FAA)

TAKEOFF MINIMUMS: **Rwy 6**, std. w/min. climb of 255' per NM to 1700 or 2700-3 for climb in visual conditions.  
DEPARTURE PROCEDURE: **Rwy 6**, climbing left turn heading 245° to 3000 before proceeding on course. Do not exceed 210 Kias until established on heading 245°. **Rwy 24**, climb heading 245° to 2400 before proceeding on course.

VCOA: obtain ATC approval for climb in visual conditions when requesting IFR clearance. Climb in visual conditions to cross McClellan-Palomar airport at or above 2900 before proceeding on course.

TAKEOFF OBSTACLE NOTES: **Rwy 6**, fence beginning 6' from DER, 453' left of centerline, up to 1' AGL/328' MSL. Obstruction light on blast fence beginning 96' from DER, 398' right of centerline, up to 18' AGL/332' MSL. Tree 325' from DER, 508' left of centerline, 347' MSL. Trees beginning 519' from DER, 504' left of centerline, up to 379' MSL. Tree 3682' from DER, 945' left of centerline, 424' MSL. Trees, equipment on building, obstruction light on flagpole beginning 3682' from DER, 333' left of centerline, up to 428' MSL. Trees beginning 4032' from DER, 489' left of centerline, up to 439' MSL. Trees, light poles beginning 4040' from DER, 318' right of centerline, up to 445' MSL. Light poles beginning 4705' from DER, 485' right of centerline, up to 30' AGL/457' MSL. Trees 4866' from DER, 988' left of centerline, 457' MSL. Trees beginning 4944' from DER, 431' right of centerline, up to 465' MSL. Light poles beginning 4985' from DER, 536' right of centerline, up to 42' AGL/468' MSL. Tree, light poles beginning 5123' from DER, 576' right of centerline, up to 476' MSL. Trees 5493' from DER, 753' right of centerline, 489' MSL. Trees, light poles beginning 5663' from DER, 569' right of centerline, up to 502' MSL. Trees 6015' from DER, 896' right of centerline, 507' MSL. Tree 1.1 NM from DER, 1131' right of centerline, 506' MSL. **Rwy 24**, terrain beginning 25' from DER, 287' right of centerline, up to 339' MSL. Bush 36' from DER, 276' right of centerline, 340' MSL. Tree 106' from DER, 520' left of centerline, 342' MSL.

CHINA LAKE NAWs (ARMITAGE FLD)  
(KNID)

RIDGECREST, CA  
TAKEOFF MINIMUMS AND (OBSTACLE)  
DEPARTURE PROCEDURES  
17173

Diverse departures not authorized, use published departure.

TAKEOFF OBSTACLE NOTES: **Rwy 14**, pylon 2252' from DER, 1094' right of cntrn, 49' AGL/2309' MSL. Pylon 2519' from DER, 945' right of cntrn, 49' AGL/2311' MSL. Pylon 2681' from DER, 1182' left of cntrn, 49' AGL/2289' MSL. Pylon 2772' from DER, 807' right of cntrn, 49' AGL/2312' MSL. Pylon 2909' from DER, 1176' left of cntrn, 49' AGL/2286' MSL. Pylon 2952' from DER, 580' right of cntrn, 49' AGL/2305' MSL. Pylon 3128' from DER, 351' right of cntrn, 49' AGL/2305' MSL. Pylon 3131' from DER, 580' left of cntrn, 49' AGL/2305' MSL. Pylon 3131' from DER, 1177' left of cntrn, 49' AGL/2298' MSL. Pylon 3132' from DER, 264' left of cntrn, 49' AGL/2295' MSL. Pylon 3133' from DER, 52' right of cntrn, 49' AGL/2289' MSL. Pylon 3133' from DER, 1022' left of cntrn, 49' AGL/2288' MSL. Pylon 3134' from DER, 876' left of cntrn, 49' AGL/2287' MSL.

## CHINO, CA

CHINO (CNO)  
TAKEOFF MINIMUMS AND (OBSTACLE)  
DEPARTURE PROCEDURES  
AMDT 5 00335 (FAA)

TAKEOFF MINIMUMS: **Rwy 3**, std. with a min. climb of 270' per NM to 4800. **Rwys 8L/R**, std. with a min. climb of 270' per NM to 4800. **Rwy 21**, Cat A/B std. with a min. climb of 290' per NM to 4800, Cat C/D std. with a min. climb of 400' per NM 4800. **Rwys 26L/R**, Cat A/B std. with a min. climb of 270' per NM to 4800, Cat C/D std. with a min. climb of 410' per NM to 4800.

DEPARTURE PROCEDURE: **Rwys 3, 8L/R**, climbing right turn direct PDZ VORTAC. **Rwys 21, 26L/R**, climbing left turn direct PDZ VORTAC. **All aircraft** climb in PDZ VORTAC holding pattern (Hold E, right turns, 258° inbound) to the appropriate MEA.

TAKEOFF OBSTACLE NOTES: 108' AGL trees 1200' from DER 3, 600' left of centerline.

DIVERSE VECTOR AREA (RADAR VECTORS)  
AMDT 1 15288 (FAA)

**Rwy 3**, heading as assigned by ATC; requires minimum climb of 250' per NM to 4300. **Rwys 8L, 8R**, heading as assigned by ATC; requires minimum climb of 370' per NM to 4100. **Rwy 21**, heading as assigned by ATC; requires minimum climb of 320' per NM to 1800. **Rwys 26L, 26R**, heading as assigned by ATC; requires minimum climb of 270' per NM to 2100.

01 MAR 2018 to 29 MAR 2018

01 MAR 2018 to 29 MAR 2018



## TAKEOFF MINIMUMS, (OBSTACLE) DEPARTURE PROCEDURES, AND



18032

## DIVERSE VECTOR AREA (RADAR VECTORS)

SW-3



## TAKEOFF MINIMUMS, (OBSTACLE) DEPARTURE PROCEDURES, AND



18032

## DIVERSE VECTOR AREA (RADAR VECTORS)

## CORONA, CA

## CORONA MUNI (AJO)

TAKEOFF MINIMUMS AND (OBSTACLE)  
DEPARTURE PROCEDURES

AMDT 3 94146 (FAA)

TAKEOFF MINIMUMS: **Rwy 7**, 1000-2 or std. with a min. climb of 310' per NM to 1700. **Rwy 25**, 600-2 or std. with a min. climb of 280' per NM to 1200.DEPARTURE PROCEDURE: **Rwy 7**, climbing left turn.**Rwy 25**, climbing right turn. All aircraft continue climb direct to PDZ VORTAC. Aircraft departing PDZ R-091 CW R-140 and R-231 CW R-280 climb on course. All others continue climb in PDZ VORTAC holding pattern (Hold NE, right turns, 210° inbound) to cross PDZ VORTAC at or above: R-141 CW R-230 4000, R-281 CW R-090 6700.

## DAGGETT, CA

## BARSTOW-DAGGETT (DAG)

TAKEOFF MINIMUMS AND (OBSTACLE)  
DEPARTURE PROCEDURES

AMDT 3 10210 (FAA)

DEPARTURE PROCEDURE: Use DAGGETT  
DEPARTURE.

## DELANO, CA

## DELANO MUNI (DLO)

TAKEOFF MINIMUMS AND (OBSTACLE)  
DEPARTURE PROCEDURES

AMDT 3A 08129 (FAA)

TAKEOFF MINIMUMS: **Rwy 32**, 400-1 or std. with a min. climb rate of 390' per NM to 400.DEPARTURE PROCEDURE: **Rwy 14**, Climb via heading 140° and EHF VORTAC R-324 to 3000 before proceeding on course. **Rwy 32**, climb via heading 320° and EHF VORTAC R-324 to 3000 before proceeding on course.

TAKEOFF OBSTACLE NOTES: 65' AGL tree 600' from DER, 500' left of centerline runway 14.

## EDWARDS AF AUX NORTH BASE (9L2)

## EDWARDS, CA

TAKEOFF MINIMUMS AND (OBSTACLE)  
DEPARTURE PROCEDURES**Rwy 6-24**, climb on course, cross 15 NM from ARP at or above 4500.

## EDWARDS AFB (KEDW)

## EDWARDS, CA

TAKEOFF MINIMUMS AND (OBSTACLE)  
DEPARTURE PROCEDURES

12012

**Rwys 4L/R**, Radar Required, Climb 340 ft/NM to 5500, track inbound on EDW R-223 to EDW VORTAC, then out EDW R-043. Climb as instructed, expect radar vectors after passing 4500 or climb on course, cross 15 NM from ARP at or above 4500.**Rwys 22L/R**, Radar and DME Required. CAT ABC track outbound EDW R-223. At 12 DME turn right heading 020°, intercept EDW R-247 to EDW VORTAC. Climb as instructed, expect radar vectors after passing 4500 or climb on course, cross 15 NM from ARP at or above 4500. CAT DE track outbound EDW R-223. At 12 DME turn right, intercept EDW R-247 to EDW VORTAC. Climb as instructed, expect radar vectors after passing 4500 or climb on course, cross 15 NM from ARP at or above 4500.

## EL CENTRO NAF (KNJK)

## EL CENTRO, CA

TAKEOFF MINIMUMS AND (OBSTACLE)  
DEPARTURE PROCEDURES

17117

TAKEOFF MINIMUMS: For Climb in Visual Conditions: **Rwys 8, 12, 26, 30**, 2000-2½.DEPARTURE PROCEDURE: **For Climb in Visual Conditions: Rwys 8, 12, 26**, cross El Centro airport at or above 1800 before proceeding on course. When executing VCOA, notify ATC prior to departure.TAKEOFF OBSTACLE NOTES: **Rwy 12**, pole -3' MSL, 1531' from DER, 884' right of cntrln. Fence -34' MSL, 199' from DER, 305' left of cntrln. Terrain -36' MSL, 0' from DER, 41' left of cntrln. Terrain -39' MSL, 0' from DER, 500' left of cntrln. Fence -34' MSL, 289' from DER, 213' left of cntrln. Pylon -3' MSL, 1532' from DER, 884' right of cntrln. Fence -34' MSL, 504' from DER, 3' right of cntrln. **Rwy 26**, terrain -45' MSL, 0' from DER, 500' left of cntrln. **Rwy 30**, electrical box 4' AGL/-45' MSL, 176' from DER, 139' left of cntrln.

## EL MONTE, CA

## SAN GABRIEL VALLEY (EMT)

TAKEOFF MINIMUMS AND (OBSTACLE)  
DEPARTURE PROCEDURES

AMDT 6 17173 (FAA)

TAKEOFF MINIMUMS: **Rwy 1**, std. w/min. climb of 340' per NM to 1000, or 1600-2½ for VCOA.DEPARTURE PROCEDURE: **Rwy 1**, climb heading 011° to 700' then climbing right turn on heading 128° and on PDZ R-278 to PDZ VORTAC thence...**Rwy 19**, climb heading 191° to 1500 then climbing left turn on heading 068° and on PDZ R-278 to PDZ VORTAC thence...

... Aircraft departing PDZ R-078 CW R-292 climb on course. All others continue climb in PDZ VORTAC holding pattern (hold NE, RT, 210° inbound) to cross PDZ VORTAC at or above MEA for route of flight.

VCOA: **Rwy 1**, obtain ATC approval for VCOA when requesting IFR clearance. Climb in visual conditions to cross San Gabriel Valley Airport at or above 1700 then intercept PDZ R-278 to PDZ VORTAC. Aircraft departing PDZ R-078 CW R-292 climb on course. All others continue climb in PDZ VORTAC holding pattern (hold NE, RT, 210° inbound) to cross PDZ VORTAC at or above MEA for route of flight.TAKEOFF OBSTACLE NOTES: **Rwy 1**, sign 18' from DER, 124' right of centerline, 10' AGL/300' MSL. Building 99' from DER, 269' left of centerline, 44' AGL/334' MSL. Hangar 273' from DER, 299' right of centerline, 20' AGL/310' MSL. Multiple light standards and vehicles on road beginning 525' from DER, left and right of centerline, up to 44' AGL/344' MSL. Trees beginning 610' from DER, left and right of centerline, up to 94' AGL/404' MSL. Pole 1698' from DER, on centerline, 65' AGL/365' MSL. **Rwy 19**, sign 16' from DER, 129' left of centerline, 15' AGL/285' MSL. Multiple poles and light standards beginning 377' from DER, left and right of centerline, up to 100' AGL/358' MSL. Trees beginning 74' from DER, right and left of centerline, up to 68' AGL/348' MSL.DIVERSE VECTOR AREA (RADAR VECTORS)  
AMDT 1 17117 (FAA)**Rwys 1**, headings as assigned by ATC; requires minimum climb of 290' per NM to 1300. **Rwys 19**, headings assigned by ATC.

## TAKEOFF MINIMUMS, (OBSTACLE) DEPARTURE PROCEDURES, AND



18032

## DIVERSE VECTOR AREA (RADAR VECTORS)

SW-3



## TAKEOFF MINIMUMS, (OBSTACLE) DEPARTURE PROCEDURES, AND



18032

## DIVERSE VECTOR AREA (RADAR VECTORS)

## FALLBROOK, CA

FALLBROOK COMMUNITY AIRPARK (L18)  
TAKEOFF MINIMUMS AND (OBSTACLE)  
DEPARTURE PROCEDURES  
AMDT 1 16315 (FAA)  
DEPARTURE PROCEDURE: Use FALLBROOK  
DEPARTURE.

## FULLERTON, CA

FULLERTON MUNI (FUL)  
TAKEOFF MINIMUMS AND (OBSTACLE)  
DEPARTURE PROCEDURES  
AMDT 5 12124 (FAA)  
TAKEOFF MINIMUMS: **Rwy 6**, std. w/min. climb of 280'  
per NM to 600.  
DEPARTURE PROCEDURE: **Rwy 6**, climbing right turn  
to 2300 direct SLI VORTAC, thence ...  
**Rwy 24**, climbing left turn to 2300 direct SLI  
VORTAC, thence ...  
... Climb in holding pattern (hold South, left turns, 351°  
inbound) until at or above MEA for direction of flight  
before proceeding course.  
TAKEOFF OBSTACLE NOTES: **Rwy 6**, windsock 58'  
from DER, 189' right of centerline, 12' AGL/109' MSL.  
Obstruction light on pole 109' from DER, 116' left of  
centerline, 23' AGL/118' MSL. Multiple poles beginning  
115' from DER, left and right of centerline, up to 40'  
AGL/198' MSL. Trains 221' from DER, left and right of  
centerline, up to 23' AGL/144' MSL. Light standard 486'  
from DER, 133' right of centerline, 20' AGL/123' MSL.  
Hopper on building 977' from DER, 468' left of  
centerline, 36' AGL/132' MSL. Obstruction light on  
building 1002' from DER, 31' right of centerline, 25'  
AGL/128' MSL. Light pole 1247' from DER, 143' left of  
centerline, 35' AGL/131' MSL. Tree 1462' from DER, 35'  
left of centerline, 75' AGL/168' MSL. Obstacle light on  
silo 1620' from DER, 317' right of centerline, 50'  
AGL/146' MSL. Building 3206' from DER, 820' right of  
centerline, 112' AGL/217' MSL. Obstruction light on  
building 3390' from DER, 913' right of centerline, 112'  
AGL/217' MSL. Tower 6093' from DER, 1936' left of  
centerline, 94' AGL/267' MSL. **Rwy 24**, vehicles on  
roadway 82' from DER, left and right of centerline, up to  
15' AGL/114' MSL. Light standard 85' from DER, 260'  
right of centerline, 25' AGL/110' MSL. Light standard  
217' from DER, 320' left of centerline, 104' AGL/122'  
MSL. Antenna on building 272' from DER, 227' left of  
centerline, 31' AGL/116' MSL. Trees beginning 352'  
from DER, 227' right of centerline, up to 60' AGL/155'  
MSL. Pole 395' from DER, 279' left of centerline, 35'  
AGL/123' MSL. Obstruction light on navaid 399' from  
DER, on centerline, 5' AGL/1 03' MSL. Poles beginning  
1335' from DER, right and left of centerline, up to 25'  
AGL/129' MSL. Tree 1377' from DER, 159' left of  
centerline, 50' AGL/147' MSL.

## HAWTHORNE, CA

JACK NORTHROP FIELD/HAWTHORNE  
MUNI (HHR)  
TAKEOFF MINIMUMS AND (OBSTACLE)  
DEPARTURE PROCEDURES  
AMDT 4 15288 (FAA)  
TAKEOFF MINIMUMS: **Rwy 7**, 300-1 $\frac{1}{2}$  or std. w/min.  
climb of 363' per NM to 500. **Rwy 25**, 400-3 or std. w/  
min. climb of 285' per NM to 600.  
DEPARTURE PROCEDURE: **Rwy 7**, climbing right turn to  
3000 heading 220° and the LAX VORTAC R-170 to  
LIMBO Int. **Rwy 25**, climbing left turn to 3000 heading  
205° and the LAX VORTAC R-170 to LIMBO Int.  
TAKEOFF OBSTACLE NOTES: **Rwy 7**, tree 115' from  
DER, 95' right of centerline, 32' AGL/77' MSL. Tree  
5378' from DER, 483' right of centerline, 90' AGL/245'  
MSL. Trees beginning 4062' from DER, 293' right of  
centerline, up to 86' AGL/210' MSL. Tree 4984' from  
DER, 763' right of centerline, 81' AGL/220' MSL. Tree  
5163' from DER, 90' right of centerline, 59' AGL/218'  
MSL. Tree 2967' from DER, 840' right of centerline, 78'  
AGL/157' MSL. Pole 1 NM from DER, 397' right of  
centerline, 58' AGL/237' MSL. Pole 3187' from DER,  
172' right of centerline, 62' AGL/160' MSL. Pole 2794'  
from DER, 322' right of centerline, 61' AGL/148' MSL.  
Pole 1484' from DER, 636' right of centerline, 41'  
AGL/111' MSL. Sign 73' from DER, 405' right of  
centerline, 38' AGL/94' MSL. Transmission line tower  
beginning 5428' from DER, 855' left of centerline, 132'  
AGL/307' MSL. Transmission line tower 5829' from DER,  
466' left of centerline, 130' AGL/273' MSL. Transmission  
line tower 1.2 NM from DER, 685' left of centerline, 124'  
AGL/282' MSL. Transmission line tower 1.3 NM from  
DER, 205' left of centerline, 112' AGL/296' MSL. Building  
1130' from DER, 404' left of centerline, 38' AGL/105'  
MSL. Building 1.1 NM from DER, 2020' left of centerline,  
76' AGL/305' MSL. Building 5081' from DER, 45' left of  
centerline, 69' AGL/228' MSL. Building 5284' from DER,  
94' left of centerline, 69' AGL/230' MSL. Building 1130'  
from DER, 405' left of centerline, 38' AGL/105' MSL.  
Monument 1.3 NM from DER, 2258' left of centerline,  
121' AGL/327' MSL. Tower 1.3 NM from DER, 1711' left  
of centerline, 115' AGL/322' MSL. Towers beginning 1.3  
NM from DER, 1673' left of centerline, up to 83'  
AGL/285' MSL. Tree 5054' from DER, 1002' left of  
centerline, 67' AGL/241 MSL. Trees beginning 2866'  
from DER, 56' left of centerline, up to 67' AGL/170' MSL.  
Poles beginning 263' from DER, 119' left of centerline,  
37' AGL/93' MSL. Poles beginning 1401' from DER, 168'  
left of centerline, up to 62' AGL/130' MSL. **Rwy 25**, tree  
988' from DER, 162' right of centerline, 71' AGL/136'  
MSL. Poles beginning 309' from DER, 202' right of  
centerline, up to 77' AGL/149' MSL. NAVAID 6' from  
DER, on centerline, 8' AGL/73' MSL. Tank 4471' from  
DER, 1311' left of centerline, 137' AGL/227' MSL. Trees  
beginning 383' from DER, 91' left of centerline, up to 61'  
AGL/122' MSL. Pole beginning 91' from DER, 257' left of  
centerline, up to 51' AGL/118' MSL. Sign 219' from DER,  
75' left of centerline, 23' AGL/88' MSL. building 286'  
from DER, 363' left of centerline, 36' AGL/101' MSL. Building  
2357' from DER, 147' left of centerline 83' AGL/154'  
MSL. Building 2.6 NM from DER, 290' left of centerline,  
353' AGL/462' MSL.

## DIVERSE VECTOR AREA (RADAR VECTORS)

ORIG 17341 (FAA)

**Rwy 7**, heading as assigned by ATC; requires  
minimum climb of 370' per NM to 400. **Rwy 25**, heading  
as assigned by ATC; requires minimum climb of 290' per  
NM to 300.



## TAKEOFF MINIMUMS, (OBSTACLE) DEPARTURE PROCEDURES, AND



18032

## DIVERSE VECTOR AREA (RADAR VECTORS)

SW-3

# TAKEOFF MINIMUMS, (OBSTACLE) DEPARTURE PROCEDURES, AND DIVERSE VECTOR AREA (RADAR VECTORS)

18032

## HEMET, CA

HEMET-RYAN (HMT)

TAKEOFF MINIMUMS AND (OBSTACLE)

DEPARTURE PROCEDURES

AMDT 3 16315 (FAA)

TAKEOFF MINIMUMS: **Rwy 5**, Std. w/min. climb of 440' per NM to 3500, or 1700-3 for climb in visual conditions. Aircraft shall advise ATC prior to executing the VCOA.

**Rwy 23**, std. w/min. climb of 495' per NM to 3000, or 1700-3 for climb in visual conditions.

DEPARTURE PROCEDURE: **Rwy 5**, climbing left turn direct HDF VOR thence...

**Rwy 23**, climb heading 230° to 3000 then right turn direct HDF VOR thence... continue climb in HDF holding pattern (hold se, right turn, 315° inbound) to cross HDF VOR at or above MEA/MCA for route of flight.

VCOA: **Rwy 5, 23**, obtain ATC approval for VCOA when requesting IFR clearance. Climb in visual conditions to cross Hemet-Ryan airport westbound at or above 3100 then proceed direct HDF VOR and continue climb in HDF holding Pattern (hold se, right turn, 315° inbound) to cross HDF VOR at or above MEA/MCA for route of flight.

TAKEOFF OBSTACLE NOTES: **Rwy 5**, vehicles on roadway, 199' from DER, crossing centerline, up to 15' AGL/1534' MSL. **Rwy 23**, trees beginning 1.1 NM from DER, 2166' right of centerline, up to 100' AGL/1859' MSL. trees beginning 1.3 NM from DER, 2249' right of centerline, up to 100' AGL/2019' MSL. trees beginning 1.5 NM from DER, 1686' left of centerline, up to 100' AGL/1808' MSL.

## IMPERIAL, CA

IMPERIAL COUNTY (IPL)

TAKEOFF MINIMUMS AND (OBSTACLE)

DEPARTURE PROCEDURES

AMDT 2A 09239 (FAA)

TAKEOFF MINIMUMS: **Rwy 14**, 400-2¼ or std. w/min. climb of 220' per NM to 400, or alternatively, with standard TAKEOFF minimums and a normal 200' per NM climb gradient, TAKEOFF must occur no later than 1800' prior to DER.

DEPARTURE PROCEDURE: **Rwys 8, 32**, turn right.

**Rwy 14**, climb runway heading. **Rwy 26**, turn left.

All aircraft climb direct IPL VORTAC.

TAKEOFF OBSTACLE NOTES: **Rwy 8**, multiple VASI beginning 687' from DER, 31' right of centerline, up to 5' AGL/-52' MSL. Antenna on building 1033' from DER, 703' left of centerline, 45' AGL/-12' MSL. Light on pole, 1984' from DER, 386' left of centerline, 55 ft AGL/-2' MSL. **Rwy 14**, building 1770' from DER, 38' left of centerline, 45' AGL/-11' MSL. Road 430' from DER, 291' left of centerline, 15' AGL/-41' MSL. Sign 1733' from DER, 35' left of centerline, 45' AGL/-11' MSL. Pole 1457' from DER, 393' right of centerline, 37' AGL/-19' MSL.

**Rwy 26**, multiple obstruction lights on poles beginning 1509' from DER, 15' left of centerline, up to 60' AGL/3' MSL. Obstruction light on pole 1511' from DER, 459' right of centerline, 59' AGL/2' MSL. **Rwy 32**, obstruction light on tank, 823' from DER, 574' right of centerline 110' AGL/53' MSL. Numerous tanks beginning 3580' from DER, 296' right of centerline, up to 109' AGL/53' MSL. Tree 373' from DER, 387' right of centerline, 80' AGL/-24' MSL. Multiple lights beginning 243' from DER, 361' right of centerline, up to 28' AGL/-29' MSL. Pole 657' from DER, 370' left of centerline, 27' AGL/-30' MSL. Road 191' from DER, 237' left of centerline, 13' AGL/-44' MSL.

## IMPERIAL BEACH NOLF (REAM FIELD)

(KNRS)

IMPERIAL BEACH, CA

TAKEOFF MINIMUMS AND (OBSTACLE)

DEPARTURE PROCEDURES

15232

**Rwy 8, 9, 26**, departures not authorized.

**Rwy 27**, diverse departure not authorized. Departures authorized for military rotorcraft only. Climb to 2000 via heading 274° to intercept NRS TACAN R-273. Cross NRS 1.5 DME at or above 800. Minimum ATC climb rate of 600/NM till 800 with takeoff occurring NLT 3038' prior to DER or cross DER at or above 320.

TAKEOFF OBSTACLE NOTES: **Rwy 27**, pylon 186' inward of DER, 552' right of cntrln, 30' AGL/43' MSL. Pylon 79' inward of DER, 521' right of cntrln, 30' AGL/42' MSL. Pylon 61' inward of DER, 587' right of cntrln, 39' AGL/51' MSL. Pylon 30' inward of DER, 704' right of cntrln, 39' AGL/50' MSL. Pylon 2' from DER, 499' right of cntrln, 32' AGL/43' MSL. Pylon 2' from DER, 498' right of cntrln, 32' AGL/42' MSL. Light pole 12' from DER, 502' right of cntrln, 40' MSL. Terrain 50' from DER, 500' right of cntrln, 11' MSL. Terrain 63' from DER, 517' right of cntrln, 11' MSL. Fence 96' from DER, 19' right of cntrln, 9' AGL/10' MSL. Tree 141' from DER, 540' right of cntrln, 34' AGL/44' MSL. Pylon 228' from DER, 515' right of cntrln, 30' AGL/42' MSL. Pylon 229' from DER, 515' right of cntrln, 30' AGL/39' MSL. Pylon 305' from DER, 802' right of cntrln, 39' AGL/48' MSL. Bldg 2840' from DER, 979' left of cntrln, 60' MSL.

## INYOKERN, CA

INYOKERN (IYK)

TAKEOFF MINIMUMS AND (OBSTACLE)

DEPARTURE PROCEDURES

ORIG 03247 (FAA)

TAKEOFF MINIMUMS: **Rwys 2, 10, 15, 28, 33, NA**.

DEPARTURE PROCEDURE: **Rwy 20**, use LAKE HUGHES RNAV DEPARTURE.

## LA VERNE, CA

BRACKETT FIELD (POC)

TAKEOFF MINIMUMS AND (OBSTACLE)

DEPARTURE PROCEDURES

AMDT 5 06047 (FAA)

TAKEOFF MINIMUMS: **Rwys 26L, 26R**, 300-1.

DEPARTURE PROCEDURE: **Rwys 8L, 8R**, climb via heading 079° to 1500, then climbing right turn via heading 195° and POM R-164 to PRADO Int. **Rwys 26L, 26R**, climb via heading 259° to 1400, then climbing left turn via heading 130° and POM R-164 to PRADO Int. Aircraft departing PRADO Int heading 141° clockwise 290° climb on course. All others climb in PRADO Int holding pattern (hold north, right turn, 164° inbound) to depart PRADO Int at or above: 291° clockwise 340°, 4500; 341° clockwise 050°, 6800; 051° clockwise 090°, 5200; 091° clockwise 140°, 4200.

TAKEOFF OBSTACLE NOTES: **Rwy 26L**, multiple trees and antenna beginning 370' from DER, 269' left of centerline up to 100' AGL/1116' MSL. Multiple trees beginning 896' from DER, 70' right of centerline, up to 100' AGL/1010' MSL. Multiple buildings and tanks beginning 2732' from DER, 416' right of centerline, up to 50' AGL/1230' MSL. **Rwy 26R**, hangar 241' from DER, 326' right of centerline, 35' AGL/994' MSL. Multiple trees beginning 1473' from DER, 807' left of centerline, up to 100' AGL/1116' MSL. Tank and trees beginning 2510' from DER, 503' right of centerline, up to 100' AGL/1289' MSL.

# TAKEOFF MINIMUMS, (OBSTACLE) DEPARTURE PROCEDURES, AND DIVERSE VECTOR AREA (RADAR VECTORS)

18032

SW-3

# TAKEOFF MINIMUMS, (OBSTACLE) DEPARTURE PROCEDURES, AND DIVERSE VECTOR AREA (RADAR VECTORS)

18032

## LANCASTER, CA

GENERAL WM. J. FOX AIRFIELD (WJF)  
TAKEOFF MINIMUMS AND (OBSTACLE)  
DEPARTURE PROCEDURES  
ORIG-A 09267 (FAA)  
DEPARTURE PROCEDURE: Climb southeast  
bound on R-299 to PMD VORTAC. Depart PMD at  
published MCA for direction of flight.  
TAKEOFF OBSTACLE NOTES: **Rwy 6**, trees  
beginning 1170' from DER, 590' right of centerline,  
up to 44' AGL/2374' MSL.

## LOMPOC, CA

### LOMPOC (LPC)

TAKEOFF MINIMUMS AND (OBSTACLE)  
DEPARTURE PROCEDURES  
AMDT 2A 16035 (FAA)

TAKEOFF MINIMUMS: **Rwy 7**, std. w/min. climb of  
425' per NM to 1400, or 1300-3' for climb in visual  
conditions.

DEPARTURE PROCEDURE: **Rwy 7**, climbing right  
turn. For climb in visual conditions: cross Lompoc  
Airport eastbound at or above 1200 MSL. **Rwy 25**,  
turn right heading 130°.

All aircraft climb to 6000 via GVO R-278 to GVO  
VORTAC. Aircraft departing GVO R-120 CW R-  
020 climb on course, all others climb in GVO  
holding pattern (NW, right turns, 127° inbound) to  
depart GVO VORTAC at or above MEA for route of  
flight.

TAKEOFF OBSTACLE NOTES: **Rwy 7**, trees 3583'  
from DER, 2.3 NM right of centerline, 50' AGL/889'  
MSL. Trees 1.2 NM from DER, 2.2 NM right of  
centerline, 50' AGL/791' MSL. Trees 1.6 NM from  
DER, 1.9 NM right of centerline, 50' AGL/743' MSL.

## LONG BEACH, CA

LONG BEACH/DAUGHERTY FIELD (LGB)  
TAKEOFF MINIMUMS AND (OBSTACLE) DEPARTURE  
PROCEDURES

AMDT 6 16147 (FAA)

TAKEOFF MINIMUMS: **Rwys 25L/R**, std. w/min. climb of 225' per  
NM to 2300.

DEPARTURE PROCEDURE: **Rwys 7L/R**, climb heading 076° to  
800, then climbing right turn SLI VORTAC and to SLI R-210 to  
PADDR INT. **Rwy 12**, climb heading 121° to intercept SLI  
VORTAC R-210 to PADDR INT. **Rwys 25L/R**, climb heading  
256° to 800, then climbing left turn heading 200° and LAX  
VORTAC R-145 to PADDR INT. **Rwy 30**, climb heading 301° to  
800, then climbing left turn heading 200° and lax VORTAC R-  
145 to PADDR INT.

TAKEOFF OBSTACLE NOTES: **Rwy 7L**, building 347' from  
DER, 416' right of centerline, 19' AGL/53' MSL. Tree 580' from  
DER, 12' right of centerline, 67' MSL. Poles beginning 606' from  
DER, 250' right of centerline, up to 29' AGL/65' MSL. Trees  
beginning 776' from DER, 243' right of centerline, up to 111'  
MSL. Trees beginning 1456' from DER, 203' right of centerline,  
up to 117' MSL. Vehicle on road 317' from DER, 248' left of  
centerline, 15' AGL/53' MSL. Poles beginning 329' from DER,  
308' left of centerline, up to 31' AGL/66' MSL. Tree 516' from  
DER, 137' left of centerline, 72' MSL. **Rwy 7R**, trees beginning  
327' from DER, 231' right of centerline, up to 70' AGL/95' MSL.  
Buildings beginning 1473' from DER, 822' right of centerline, up  
to 99' AGL/118' MSL. Light poles beginning 380' from DER,  
390' right of centerline, up to 50' AGL/60' MSL. Trees beginning  
1208' from DER, 197' left of centerline, up to 71' AGL/101' MSL.  
Buildings beginning 277' from DER, 474' left of centerline, up to  
42' AGL/72' MSL. **Rwy 12**, trees beginning 969' from DER, 391'  
right of centerline, up to 65' AGL/87' MSL. Spire 3094' from  
DER, 1182' right of centerline, 98' AGL/118' MSL. Trees  
beginning 1124' from DER, 357' left of centerline, up to 71'  
AGL/98' MSL. Light pole 1126' from DER, 607' left of centerline,  
37' AGL/59' MSL. Pipe 1146' from DER, 334' left of centerline,  
31' AGL/55' MSL. **Rwy 25L**, tree 2008' from DER, 182' right of  
centerline, 73' AGL/107' MSL. Light pole 1283' from DER, 122'  
right of centerline, 29' AGL/88' MSL. Building 1149' from DER,  
793' right of centerline, 105' AGL/163' MSL. Tower 3821' from  
DER, 439' right of centerline, 75' AGL/158' MSL. Light pole  
1283' from DER, 122' right of centerline, 29' AGL/88' MSL.  
Trees beginning 486' from DER, 91' left of centerline, up to 77'  
AGL/144' MSL. Signs beginning 1074' from DER, 209' left of  
centerline, up to 35' AGL/108' MSL. **Rwy 25R**, REIL 68' from  
DER, 59' right of centerline, 5' AGL/68' MSL. Tree 243' from  
DER, 366' right of centerline, 97' MSL. Building 250' from DER,  
204' right of centerline, 30' AGL/93' MSL. Pole 623' from DER,  
128' right of centerline, 25' AGL/89' MSL. Tree 631' from DER,  
409' right of centerline, 122' MSL. Trees beginning 1247' from  
DER, 2' right of centerline, up to 133' MSL. Building 1.1 NM  
from DER, 972' right of centerline, 156' AGL/248' MSL. Building  
1.30 NM from DER, 655' right of centerline, 157' AGL/259' MSL.  
Fence 179' from DER, 8' left of centerline, 5' AGL/68' MSL.  
Poles beginning 322' from DER, 111' left of centerline, up to 34'  
AGL/95' MSL. Sign 1153' from DER, 5' left of centerline, 77'  
AGL/139' MSL. Tree 1259' from DER, 591' left of centerline,  
127' MSL. Tree 2148' from DER, 249' left of centerline, 117'  
MSL. **Rwy 30**, trees beginning 1596' from DER, 104' right of  
centerline, up to 55' AGL/121' MSL. Light poles beginning 356'  
from DER, 245' right of centerline, up to 30' AGL/93' MSL. Pole  
312' right of centerline, 72' AGL/145' MSL. Buildings beginning  
1338' from DER, 621' right of centerline, up to 66' AGL/139'  
MSL. Railroad beginning 648' from DER, on centerline, 17'  
AGL/91' MSL. Trees beginning 1205' from DER, 517' left of  
centerline, up to 65' AGL/130' MSL. Light poles beginning 984'  
from DER, 69' left of centerline, up to 54' AGL/127' MSL.  
Buildings beginning 351' from DER, 289' left of centerline, up to  
22' AGL/89' MSL. Poles beginning 1939' from DER, 312' left of  
centerline, up to 54' AGL/127' MSL.

01 MAR 2018 to 29 MAR 2018

01 MAR 2018 to 29 MAR 2018

# TAKEOFF MINIMUMS, (OBSTACLE) DEPARTURE PROCEDURES, AND DIVERSE VECTOR AREA (RADAR VECTORS)

18032

SW-3





## TAKEOFF MINIMUMS, (OBSTACLE) DEPARTURE PROCEDURES, AND



18032

## DIVERSE VECTOR AREA (RADAR VECTORS)

## LONG BEACH, CA (CON'T)

LONG BEACH/DAUGHERTY FIELD  
(CON'T)DIVERSE VECTOR AREA (RADAR  
VECTORS)

AMDT 1 16231 (FAA)

**Rwys 7L/R, 12, 30**, heading as assigned by ATC.**Rwy 25L**, heading as assigned by ATC; requires  
minimum climb of 330' per NM to 700.**Rwy 25R**, heading as assigned by ATC; requires  
minimum climb of 230' per NM to 1600.

## LOS ANGELES, CA (CON'T)

LOS ANGELES INTL (LAX) (CON'T)

TAKEOFF OBSTACLE NOTES: **Rwy 6L**, runway light 7' from DER, 4' left of centerline, 1' AGL/120' MSL. Vehicles on road beginning 12' from DER, 170' left of centerline, up to 131' MSL. Buildings beginning 1761' from DER, 920' left of centerline, up to 92' AGL/203' MSL. **Rwy 6R**, NAVAID 79' from DER, 321' left of centerline, 20' AGL/123' MSL. NAVAID 83' from DER, 1' right of centerline, 19' AGL/126' MSL. Pole and light pole beginning 323' from DER, on centerline, up to 16' AGL/138' MSL. Light poles beginning 528' from DER, 58' left of centerline, up to 30' AGL/137' MSL. Pole 779' from DER, 1' right of centerline, 34' AGL/140' MSL. Light pole 779' from DER, on centerline, 35' AGL/142' MSL. Pole 793' from DER, 459' right of centerline, 39' AGL/145' MSL. Approach light and light pole beginning 797' from DER, 305' left of centerline, up to 39' AGL/148' MSL. Approach lights beginning 1006' from DER, 697' left of centerline, up to 42' AGL/149' MSL. Tree 1057' from DER, 400' left of centerline, 41' AGL/150' MSL. Trees beginning 1160' from DER, 320' left of centerline, up to 49' AGL/157' MSL. Tree 1374' from DER, 309' left of centerline, 47' AGL/159' MSL. Tree 1385' from DER, 317' left of centerline, 50' AGL/163' MSL. Tree 1699' from DER, 101' right of centerline, 57' AGL/164' MSL.

**Rwy 7L**, fences beginning 168' from DER, 31' left of centerline, up to 14' AGL/107' MSL. Fence and vehicles on road beginning 168' from DER, on centerline, up to 14' AGL/107' MSL. Vehicles on road 182' from DER, 480' left of centerline, 109' MSL. Vehicles on road, fence, tower, railroad, and pole beginning 197' from DER, 24' left of centerline, up to 24' AGL/118' MSL. Railroad and vehicles on road beginning 309' from DER, 14' right of centerline, up to 117' MSL. Runway light, NAVAID, vehicles on road, and pole beginning 444' from DER, on centerline, up to 29' AGL/121' MSL. Sign 494' from DER, 478' left of centerline, 32' AGL/124' MSL. Sign and light pole beginning 508' from DER, 263' left of centerline, up to 32' AGL/126' MSL. Runway light, pole, and building beginning 700' from DER, 53' left of centerline, up to 58' AGL/152' MSL. **Rwy 7R**, runway light 10' from DER, 5' right of centerline, 2' AGL/99' MSL. Runway light 10' from DER, 5' left of centerline, 2' AGL/99' MSL. Building 792' from DER, 701' right of centerline, 37' AGL/130' MSL. Tree 1250' from DER, 746' right of centerline, 129' AGL/155' MSL. **Rwy 24L**, vehicles on road 1927' from DER, 1010' right of centerline, 163' MSL. Light pole 2163' from DER, 915' right of centerline, 32' AGL/169' MSL.

**Rwy 24R**, windsock 137' from DER, 400' left of centerline, 21' AGL/128' MSL. Tower 211' from DER, 401' left of centerline, 66' AGL/151' MSL. Tower 212' from DER, 402' left of centerline, 47' AGL/154' MSL. **Rwy 25L**, vehicles on road 35' from DER, 422' left of centerline, 130' MSL. Pole 2365' from DER, 766' left of centerline, 57' AGL/184' MSL. Tree and transmission tower beginning 2488' from DER, 757' left of centerline, up to 66' AGL/200' MSL. **Rwy 25R**, building 74' from DER, 364' left of centerline, 27' AGL/135' MSL. Tree 2959' from DER, 569' left of centerline, 7' AGL/189' MSL. Pole and antenna beginning 3073' from DER, 212' left of centerline, up to 30' AGL/203' MSL.

## DIVERSE VECTOR AREA (RADAR VECTORS)

AMDT 6 17257

**Rwy 6L**, headings as assigned by ATC. **Rwy 6R**, headingsas assigned by ATC. **Rwy 7L**, headings as assigned by ATC.**Rwy 7R**, headings as assigned by ATC. **Rwy 24L**, headingsas assigned by ATC. **Rwy 24R**, headings as assigned by ATC.**Rwys 25L**, headings as assigned by ATC. **Rwys 25R**,

headings as assigned by ATC.

## LOS ALAMITOS AAF (KSLI), CA

TAKEOFF MINIMUMS AND (OBSTACLE)  
DEPARTURE PROCEDURES

17173

DEPARTURE PROCEDURE:

All aircraft, climb direct SLI VORTAC. Aircraft departing SLI VORTAC R-040 CW 345° climb on course. All others continue climb via the SLI R-171 southbound then climbing right turn direct SLI VORTAC to cross at or above 4600.

**Rwys 4L/R**, climbing right turn.**Rwys 22L/R**, 300-1 or std with a min climb of 230 ft/ NM to 400, climbing left turn.TAKEOFF OBSTACLE NOTES: **Rwy 4R**, trees 1062' from DER, 615' left of cntrln, 66' AGL/100' MSL.

## LOS ANGELES, CA

LOS ANGELES INTL (LAX)

TAKEOFF MINIMUMS AND (OBSTACLE)  
DEPARTURE PROCEDURES

AMDT 14 17229 (FAA)

DEPARTURE PROCEDURE: **Rwys 6L/R, 7L/R**, climb to 2000 heading 071°, then climbing right turn, thence... **Rwys 24L/R**, climb to 2000 heading 251°, then climbing left turn, thence... **Rwys 25L/R**, turbojet climb to 2000 heading 251°, then climbing left turn, thence... non-turbojet climb to 2000 heading 251°, at the SMO R-154 turn left heading 200°, thence... ..climb direct SLI VORTAC, then climb on course.

01 MAR 2018 to 29 MAR 2018

01 MAR 2018 to 29 MAR 2018



## TAKEOFF MINIMUMS, (OBSTACLE) DEPARTURE PROCEDURES, AND



18032

## DIVERSE VECTOR AREA (RADAR VECTORS)



## TAKEOFF MINIMUMS, (OBSTACLE) DEPARTURE PROCEDURES, AND



18032

## DIVERSE VECTOR AREA (RADAR VECTORS)

## LOS ANGELES, CA (CON'T)

## WHITEMAN (WHP)

TAKEOFF MINIMUMS AND (OBSTACLE)

DEPARTURE PROCEDURES

ORIG 94034 (FAA)

TAKEOFF MINIMUMS: **Rwys 12, 30**, 2900-2 or std. with a min. climb of 350' per NM to 4300.DEPARTURE PROCEDURE: **Rwy 12**, climbing right turn direct VNY VOR/DME. **Rwy 30**, climbing left turn heading 260°. All aircraft climb to 4500 via VNY R-325, then climbing left turn direct VNY VOR/DME.

## MARCH ARB (KRIV)

## RIVERSIDE, CA

TAKEOFF MINIMUMS AND (OBSTACLE)

DEPARTURE PROCEDURES

AMDT 5, 17117

TAKEOFF MINIMUMS: **Rwy 32**, 1200-3, or standard with a minimum climb rate of 240 ft/NM to 3100.DEPARTURE PROCEDURE: **Rwy 14**, Climb direct HDF VOR, then climbing right turn on hdg between 155° SW to 181°. Max airspeed 250 KIAS. **Rwy 32**, Climb left turn hdg between 150° to 135° CCW from DER.

Maximum 250 KIAS or 2300-3 For Climb in Visual Conditions within 4.5 NM of March ARB, cross March ARB at or above 3700 MSL, then climb and maintain 6000 direct HDF VOR, then via HDF R-153 to HDF R-153/PDZ R-130, direct SKYES INT. Do not exceed 250 KIAS until passing SKYES. Aircraft shall advise ATC prior to executing VCOA. VCOA not available for CAT E aircraft.

TAKEOFF OBSTACLE NOTES: **Rwy 14**, tree 2248' from DER, 1000' right of cntrln, 150' AGL/1630' MSL. Tree 1920' from DER, 1000' right of cntrln, 150' AGL/1630' MSL. Tree 1789' from DER, 1000' right of cntrln, 150' AGL/1630' MSL. Tree 2278' from DER, 1002' left of cntrln, 150' AGL/1622' MSL. Aircraft 28' inward of DER, 542' left of cntrln, 65' AGL/1550' MSL. Aircraft 31' inward of DER, 298' left of cntrln, 30' AGL/1516' MSL. Use caution when departing **Rwy 14**, rapid rising terrain within 3.5 NM SE of March ARB. **Rwy 32**, aircraft 30' from DER, 526' right of cntrln, 65' AGL/1600' MSL. Aircraft 5' from DER, 282' right of cntrln, 30' AGL/1565' MSL.

## MIRAMAR MCAS (JOE FOSS FLD) (KNKX)

## SAN DIEGO, CA

TAKEOFF MINIMUMS AND (OBSTACLE)

DEPARTURE PROCEDURES

18032

**Rwys 6L, 6R** 340° through 150° CW-Civil, std. w/ min. climb of 300' per NM to 7600; Military, std. with min. climb of 280' per NM to 7600. **Rwys 24L, 24R**, 100° through 340° CW-Civil std. w/ min. climb of 290' per NM to 7600; Military, std. w/ min. climb of 270' per NM to 7600.TAKEOFF OBSTACLE NOTES: **Rwy 6L**, tower 2322' from DER, 1084' left of centerline, 53' AGL/538' MSL. Building 2321' from DER, 1084' left of centerline, 539' MSL. Tower 2366' from DER, 1083' left of centerline, 53' AGL/538' MSL. **Rwy 24L**, landfill 3605' from DER, 1681' left of centerline, 40' AGL/525' MSL. Landfill 3312' from DER, 1197' left of centerline, 40' AGL/525' MSL. Landfill 3792' from DER, 1225' left of centerline, 40' AGL/525' MSL. Landfill 3388' from DER, 1022' left of centerline, 40' AGL/525' MSL. Landfill 3489' from DER, 1483' left of centerline, 40' AGL/525' MSL. Terrain 47' from DER, 512' left of centerline, 457' MSL. Terrain 16' from DER, 500' left of centerline, 457' MSL. Terrain 384' from DER, 549' right of centerline, 459' MSL. Terrain 50' from DER, 500' right of centerline, 459' MSL. Terrain 63' from DER, 517' right of centerline, 459' MSL. Landfill 3091' from DER, 1243' left of centerline, 40' AGL/525' MSL.

## MOJAVE, CA

## MOJAVE AIR AND SPACE PORT (MHV)

TAKEOFF MINIMUMS AND (OBSTACLE)

DEPARTURE PROCEDURES

AMDT 2A 14177 (FAA)

TAKEOFF MINIMUMS: **Rwys 4, 8, 12**, NA - restricted airspace. **Rwys 22, 26**, std. w/min. climb of 415' per NM to 6800 or 4100-3 for climb in visual conditions.**Rwy 30**, std. w/min. climb of 510' per NM to 5600 or 4100-3 for climb in visual conditions.DEPARTURE PROCEDURE: **Rwy 22**, climb to 8000 heading 218° and LHS R-023 to LHS VORTAC. **Rwy 26**, climbing left turn to 8000 heading 218° and LHS R-023 to LHS VORTAC. **Rwy 30**, climbing left turn to 8000 heading 200° and LHS R-023 to LHS VORTAC.VCOA: **Rwy 22**, obtain ATC approval for climb in visual conditions when requesting IFR clearance. Climb in visual conditions cross Mojave airport southwest bound at or above 6800, then climb to 8000 on LHS R-023 to LHS VORTAC. **Rwy 26**, obtain ATC approval for climb in visual conditions when requesting IFR clearance. Climb in visual conditions cross Mojave airport at or above 6800, then climb to 8000 on LHS R-023 to LHS VORTAC. **Rwy 30**, obtain ATC approval for climb in visual conditions when requesting IFR clearance. Climb in visual conditions cross Mojave airport at or above 6800, then climb to 8000 on LHS R-023 to LHS VORTAC.TAKEOFF OBSTACLE NOTES: **Rwy 22**, antenna on tower 2260' from DER, 812' right of centerline, 60' AGL/2838' MSL. Sign 283' from DER, 466' right of centerline, 10' AGL/2788' MSL. **Rwy 26**, antenna on tower 1797' from DER, 615' left of centerline, 58' AGL/2838' MSL. Sign 32' from DER, 341' right of centerline, 8' AGL/2788' MSL. Tree 258' from DER, 120' left of centerline, 8' AGL/2788' MSL. **Rwy 30**, multiple poles beginning 3083' from DER, 306' right of centerline, up to 91' AGL/2892' MSL. Road and railroad beginning 1241' from DER, right and left of centerline, up to 44' AGL/2845' MSL. Bush 305' from DER, 457' right of centerline, 16' AGL/2817' MSL.

## TAKEOFF MINIMUMS, (OBSTACLE) DEPARTURE PROCEDURES, AND



18032

## DIVERSE VECTOR AREA (RADAR VECTORS)

SW-3



## TAKEOFF MINIMUMS, (OBSTACLE) DEPARTURE PROCEDURES, AND



18032

## DIVERSE VECTOR AREA (RADAR VECTORS)

## MURRIETA/TEMECULA, CA

FRENCH VALLEY (F70)

TAKEOFF MINIMUMS AND (OBSTACLE)

DEPARTURE PROCEDURES

ORIG 97254 (FAA)

TAKEOFF MINIMUMS: **Rwy 18**, NA. **Rwy 36**, 700-2 or std. with a min. climb of 340' per NM to 2200.DEPARTURE PROCEDURE: **Rwy 36**, climb runway heading to 2200, then climbing left turn via HDF R-145 to HDF VOR. Aircraft departing HDF VOR 065° CW 352° climb on course. Aircraft departing northeast bound, climb in HDF holding pattern, (SE, right turns, 315° inbound) to depart HDF VOR at or above: 353° CW 054°, 6800; 055° CW 064°, 5800; before proceeding on course.

## NEEDLES, CA

NEEDLES (EED)

TAKEOFF MINIMUMS AND (OBSTACLE)

DEPARTURE PROCEDURES

AMDT 1 14009 (FAA)

TAKEOFF MINIMUMS: **Rwy 11**, std. w/min. climb of 235' per NM to 2800, or 2600-3 for climb in visual conditions.**Rwy 20**, std. w/min. climb of 420' per NM to 3700, or 2600-3 for climb in visual conditions. **Rwy 29**, std. w/min. climb of 390' per NM to 2200, or 2600-3 for climb in visual conditions.DEPARTURE PROCEDURE: **Rwy 2**, climb heading 015° to 1700, then climbing right turn direct EED VORTAC, thence . . .**Rwys 11, 20**, climbing left turn direct EED VORTAC, thence . . .**Rwy 29**, climbing right turn direct EED VORTAC, thence . . .

. . . Climb in EED holding pattern (hold NW, right turns, 139° inbound) to cross EED VORTAC at or above MEA for route of flight before proceeding on course. Or for climb in visual conditions cross Needles airport at or above 3400 before proceeding on course. When executing VCOA, notify ATC prior to departure.

TAKEOFF OBSTACLE NOTES: **Rwy 11**, terrain 20' from DER, 301' right of centerline, 920' MSL. **Rwy 20**, building 73' from DER, 451' left of centerline, 21' AGL/976' MSL. Windssock 181' from DER, 409' left of centerline, 23' AGL/972' MSL. Terrain beginning 295' from DER, 341' right of centerline up to 1079' MSL. **Rwy 29**, terrain 92' from DER, 328' left of centerline 1000' MSL.

## NORTH ISLAND NAS (HALSEY FIELD)

(KNZY)

SAN DIEGO, CA

TAKEOFF MINIMUMS AND (OBSTACLE)

DEPARTURE PROCEDURES

16259

DEPARTURE PROCEDURE: **Rwy 11**, diverse departures authorized 131° CW 184°. Cross DER at or above 25' AGL (51' MSL). Make immediate right turn to assigned heading within 1.4 DME of NZY TACAN to avoid over flying the City of Coronado. **Rwy 18**, diverse departures authorized 131° CW 177°. **Rwy 29**, diverse departures not authorized. Use published DP. **Rwy 36**, departure not authorized.TAKEOFF OBSTACLE NOTES: **Rwy 11**, Numerous trees left and right of runway centerline from 9' prior to DER to 2018', 33' MSL to 95' MSL. Golf ball fencing 74' AGL/88' MSL, 2226' from DER, 1215' left of centerline. Tree 8' inward of DER, 429' right of centerline, 48' AGL/74' MSL. Tree 11' from DER, 525' right of centerline, 46' AGL/73' MSL. Multiple trees 159' from DER, 433' right of centerline, 43' AGL/71' MSL. Tree 78' from DER, 371' right of centerline, 29' AGL/56' MSL. Tree 91' from DER, 460' right of centerline, 28' AGL/55' MSL. Palm 90' from DER, 468' right of centerline, 27' AGL/54' MSL. **Rwy 18**, top of light pole 491' from DER, 627' right of centerline, 39' MSL. Top of light pole 669' from DER, 625' right of centerline, 38' MSL. Top of light pole 1209' from DER, 625' right of centerline, 41' MSL. Top of light pole 1031' from DER, 626' right of centerline, 40' MSL. Top of light pole 850' from DER, 627' right of centerline, 40' MSL. **Rwy 29**, Shipping Channel accommodating vessels up to 200' AGL (206' MSL with tidal range), starting 2577' from DER on centerline. Twin Towers 145' AGL/534' MSL, 1.4 NM from DER, 2645' left of centerline. Tower 479' MSL, 1.5 NM from DER, 1969' left of centerline. Tower 100' AGL/455' MSL, 1.5 NM from DER, 2054' left of centerline. Tower 120' AGL/544' MSL, 1139' from DER, 2.1 NM left of centerline.

## OCEANSIDE, CA

BOB MAXWELL MEMORIAL AIRFIELD

(OKB)

TAKEOFF MINIMUMS AND (OBSTACLE)

DEPARTURE PROCEDURES

AMDT 4A 16119 FAA

TAKEOFF MINIMUMS: **Rwy 6**, 400-1 or std. with a min. climb of 320' per NM to 500. **Rwy 24**, 300-1 or std. with a min. climb of 670' per NM to 300.DEPARTURE PROCEDURE: **Rwy 6**, climbing right turn.**Rwy 24**, climbing left turn. All aircraft climb via heading 235° to 1500, then climbing right turn direct OCN VORTAC.

01 MAR 2018 to 29 MAR 2018

01 MAR 2018 to 29 MAR 2018



## TAKEOFF MINIMUMS, (OBSTACLE) DEPARTURE PROCEDURES, AND



18032

## DIVERSE VECTOR AREA (RADAR VECTORS)

SW-3



## TAKEOFF MINIMUMS, (OBSTACLE) DEPARTURE PROCEDURES, AND



18032

## DIVERSE VECTOR AREA (RADAR VECTORS)

## ONTARIO, CA

## ONTARIO INTL (ONT)

TAKEOFF MINIMUMS AND (OBSTACLE)

DEPARTURE PROCEDURES

AMDT 9 16147 (FAA)

TAKEOFF MINIMUMS: **Rwy 8L, 8R**, std. w/ min. climb of 285' per NM to 3000.DEPARTURE PROCEDURE: **Rwy 8L, 8R**, climb heading 078° to 2600 then climbing right turn direct PDZ VORTAC, thence ... **Rwys 26L, 26R**, climb heading 258° to 2600 then climbing left turn direct PDZ VORTAC, thence...

...climb in PDZ holding pattern (hold NE, right turns, 210° inbound) to cross PDZ VORTAC at or above MEA for route of flight before proceeding on course.

TAKEOFF OBSTACLE NOTES: **Rwy 8L**, grd 81' from DER, 443' left of centerline, 936 MSL. Building 1605' from DER, 846' left of centerline, 975 MSL. Lt poles beginning 2042' from DER, 684' left of centerline, up to 990 MSL.**Rwy 26L**, pole 754' from DER, 670' left of centerline, 964 MSL. Trees beginning 1050' from DER, 708' left of centerline, up to 985 MSL. Tree 1987' from DER, 329' left of centerline, 986 MSL. OL on GS, 125' from DER, 339' right of centerline, 982 MSL. **Rwy 26R**, grd, antenna on building, beginning 30' from DER, 396' left of centerline, up to 951' MSL. Lt pole 483' from DER, 263' left of centerline, 973' MSL. Pole, RR, LT pole beginning 580' from DER, 371' left of centerline, up to 978' MSL. OL on DME, OL on LOC, beginning 369' from DER, 1' right of centerline, up to 962' MSL. Lt poles beginning 1144' from DER, 211' right of centerline, up to 981' MSL. Pole, LT pole beginning 1244' from DER, 543' right of centerline, up to 986' MSL. Tree 1672' from DER, 696' right of centerline, 996' MSL. Trees, beginning 2882' from DER, 673' right of centerline, up to 1030' MSL.

## DIVERSE VECTOR AREA (RADAR VECTORS)

AMDT 2 16147 (FAA)

**Rwy 8L**, headings as assigned by ATC; requires minimum climb of 280' per NM to 2900. **Rwy 8R**, headings as assigned by ATC; requires minimum climb of 285' per NM to 2900. **Rwys 26L, 26R**, headings as assigned by ATC.

## OXNARD, CA

## OXNARD (OXR)

TAKEOFF MINIMUMS AND (OBSTACLE)

DEPARTURE PROCEDURES

AMDT 6 00167 (FAA)

TAKEOFF MINIMUMS: **Rwy 7**, 2100-5 or std. with a min. climb of 290' per NM to 2600.DEPARTURE PROCEDURE: **Rwy 7**, climbing left turn.**Rwy 25**, climb runway heading. **All aircraft** continue climb to 6000 (or assigned altitude) via CMA R-249 to SQUID Int. Aircraft departing SQUID Int 040° CW 300° climb on course. All others continue climb in SQUID holding pattern (Hold W, right turns, 069° inbound) to cross SQUID INT at or above 2300.TAKEOFF OBSTACLE NOTES: **Rwy 7**, 59' AGL tree 527' from DER, 501' left of centerline.

## PALM SPRINGS, CA

## BERMUDA DUNES (UDD)

TAKEOFF MINIMUMS AND (OBSTACLE)

DEPARTURE PROCEDURES

AMDT 1 16259 (FAA)

DEPARTURE PROCEDURE: Use BERMUDA DUNES DEPARTURE.

## JACQUELINE COCHRAN RGNL (TRM)

TAKEOFF MINIMUMS AND (OBSTACLE)

DEPARTURE PROCEDURES

AMDT 3 16259 (FAA)

TAKEOFF MINIMUMS: **Rwy 12**, std. w/min. climb of 364' per NM to 3400. **Rwy 17**, std. w/min. climb of 374' per NM to 3400. **Rwy 30**, std. w/min. climb of 340' per NM to 3400. **Rwy 35**, std. w/min. climb of 402' per NM to 3400.DEPARTURE PROCEDURE: **Rwy 12**, climbing right turn to intercept TRM VORTAC R-136 to MECCA, thence...**Rwy 17**, Climbing left turn heading 100 to intercept TRM VORTAC R-136 to MECCA, thence... **Rwy 30, 35**, Climbing right turn heading 180° to intercept TRM VORTAC R-136 to MECCA, thence... ...aircraft departing MECCA on TRM VORTAC R-101 CW R-139, climb on course. All others turn left direct TRM VORTAC and climb in TRM VORTAC holding pattern (hold e, right turns, 289° inbound) until reaching MEA/MCA for route of flight. DME required.TAKEOFF OBSTACLE NOTES: **Rwy 12**, tree 52' from DER, 495' left of centerline, 14' AGL/-117' MSL. Tree 131' from DER, 455' right of centerline, 20' AGL/-111' MSL. Windssock 195' from DER, 444' left of centerline, 22' AGL/-109' MSL. Tree 623' from DER, 403' right of centerline, 18' AGL/-113' MSL. Tree 1427' from DER, 814' left of centerline, 60' AGL/- 71' MSL. **Rwy 17**, tree 58' from DER, 491' right of centerline, 6' AGL/-129' MSL. Tree 82' from DER, 188' right of centerline, 34' AGL/-101' MSL. Tree 168' from DER, 432' left of centerline, 18' AGL/-117' MSL. Tree 235' from DER, 429' left of centerline, 16' AGL/-119' MSL. **Rwy 30**, bush 11' from DER, 150' left of centerline, 4' AGL/-112' MSL. Tree 104' from DER, 496' right of centerline, 26' AGL/-112' MSL. Tree 145' from DER, 458' left of centerline, 9' AGL/-107' MSL. Tree 258' from DER, 281' left of centerline, 19' AGL/-97' MSL. Tree 701' from DER, 278' right of centerline, 22' AGL/-94' MSL. Tree 896' from DER, 223' left of centerline, 26' AGL/-90 MSL. **Rwy 35**, windssock 54' from DER, 190' right of centerline, 8' AGL/-107' MSL. Tree 102' from DER, 258' right of centerline, 19' AGL/-96' MSL. Tree 196' from DER, 295' right of centerline, 18' AGL/-97' MSL. Tree 318' from DER, 372' right of centerline, 31' AGL/-84' MSL. Tree 445' from DER, 418' left of centerline, 18' AGL/- 97' MSL. Tree 464' from DER, 337' left of centerline, 14' AGL/-101' MSL. Tree 697' from DER, 265 right of centerline, 22' AGL/-93' MSL. Tree 1778' from DER, 964' left of centerline, 93' AGL/-22' MSL.

01 MAR 2018 to 29 MAR 2018

01 MAR 2018 to 29 MAR 2018



## TAKEOFF MINIMUMS, (OBSTACLE) DEPARTURE PROCEDURES, AND



18032

## DIVERSE VECTOR AREA (RADAR VECTORS)

SW-3



## TAKEOFF MINIMUMS, (OBSTACLE) DEPARTURE PROCEDURES, AND



18032

## DIVERSE VECTOR AREA (RADAR VECTORS)

## PALM SPRINGS, CA (CON'T)

## PALM SPRINGS INTL (PSP)

TAKEOFF MINIMUMS AND (OBSTACLE)  
DEPARTURE PROCEDURES

AMDT 5A 13178 (FAA)

TAKEOFF MINIMUMS: **Rwy 13L**, minimum climb of 440' per NM to 2300' or 5900-3 for climb in visual conditions.**Rwy 13R**, minimum climb of 422' per NM to 2300' or 5900-3 for climb in visual conditions. **Rwy 31L**, minimum climb of 386' per NM to 4500' or 5900-3 for climb in visual conditions. **Rwy 31R**, minimum climb of 405' per NM to 4500' or 5900-3 for climb in visual conditions.DEPARTURE PROCEDURE: **Rwys 13L/R**, climbing left turn heading 090° to intercept TRM R-304 to TRM VORTAC or for climb in visual conditions cross Palm Springs Intl airport at or above 6300 then direct PSP VORTAC thence ... **Rwys 31L/R**, climbing right turn direct PSP VORTAC thence ..., or for climb in visual conditions cross Palm Springs Intl airport at or above 6300 then direct PSP VORTAC thence ...  
... via PSP R-124 and TRM R-304 to TRM VORTAC.**All Rwys** if not at MEA/MCA at TRM VORTAC, climb in TRM holding pattern (hold E, right turns, 289° inbound) until reaching MEA/MCA for assigned route of flight. When executing VCOA, notify ATC prior to departure.TAKEOFF OBSTACLE NOTES: **Rwy 13L**, trees beginning 299' from DER, 530' left of centerline, up to 66' AGL/465' MSL. HGR 935' from DER, 552' left of centerline, 31' AGL/440' MSL. **Rwy 13R**, trees beginning 1170' from DER, 239' right of centerline, up to 100' AGL/599' MSL. Poles beginning 815' from DER, 209' right of centerline, up to 44' AGL/433' MSL. Light 843' from DER, 441' right of centerline, 38' AGL/427' MSL. Antenna 1642' from DER, 26' right of centerline, 53' AGL/442' MSL. **Rwy 31L**, poles beginning 1641' from DER, 125' right of centerline, up to 31' AGL/550' MSL. Towers beginning 2418' from DER, 402' left of centerline, up to 59' AGL/560' MSL. Tree 3016' from DER, 66' right of centerline, 43' AGL/562' MSL. **Rwy 31R**, multiple trees and bushes beginning 305' from DER, 233' right of centerline, up to 48' AGL/507' MSL. Vent on building 919' from DER, 399' right of centerline, 15' AGL/474' MSL.

## DIVERSE VECTOR AREA (RADAR VECTORS)

ORIG 15316 (FAA)

**Rwy 13L**, heading as assigned by ATC; requires minimum climb of 310' per NM to 4800. **Rwy 13R**, heading as assigned by ATC; requires minimum climb of 340' per NM to 2700. **Rwy 31L**, heading as assigned by ATC; requires minimum climb of 480' per NM to 7000. **Rwy 31R**, heading as assigned by ATC; requires minimum climb of 490' per NM to 7000.

## PALMDALE, CA

## PALMDALE USAF PLANT 42 (PMD)

TAKEOFF MINIMUMS AND (OBSTACLE)  
DEPARTURE PROCEDURES

AMDT 2 10154 (FAA)

TAKEOFF MINIMUMS: **Rwy 22**, std. with a min. climb of 300' per NM to 3800 or 1300-3 for climb in visual conditions.DEPARTURE PROCEDURE: **Rwys 4,7**, climbing left turn intercept PMD VORTAC R-298 to cross FISCH INT at or above MEA/MCA for route of flight, if not at MEA/MCA continue climb in FISCH INT holding pattern (hold Southeast, left turns, 298° inbound) to cross FISCH INT at or above 6500 or MCA for route of flight. **Rwy 22**, climbing right turn intercept PMD VORTAC R-298 to cross FISCH INT at or above MEA/MCA for route of flight, if not at MEA/MCA continue climb in FISCH INT holding pattern (hold Southeast, left turns, 298° inbound) to cross FISCH INT at or above 6500 or MCA for route of flight, or for climb in visual conditions cross Palmdale Rgnl/USAF Plant 42 at or above 3700 then via PMD VORTAC R-298 to cross FISCH INT at or above MEA/MCA for route of flight, if not at MEA/MCA continue climb in FISCH INT holding pattern (hold Southeast, left turns, 298° inbound) to cross FISCH INT at or above 6500 or MCA for route of flight. **Rwy 25**, climbing right turn intercept PMD VORTAC R-298 to cross FISCH INT at or above MEA/MCA for route, if not at MEA/MCA continue climb in FISCH INT holding pattern (hold Southeast, left turns, 298° inbound) to cross FISCH INT at or above 6500 or MCA for route of flight.TAKEOFF OBSTACLE NOTES: **Rwy 25**, tree 2395' from DER 986' left of centerline, 100' AGL/2659' MSL.

## PASO ROBLES, CA

## PASO ROBLES MUNI (PRB)

TAKEOFF MINIMUMS AND (OBSTACLE)  
DEPARTURE PROCEDURES

AMDT 1 88182 (FAA)

DEPARTURE PROCEDURE: All departures maintain 250 kts or less until inbound to PRB. **Rwy 1**, climb to 3000 via heading 280° to intercept PRB R-326 outbound. V248 northbound climb on course. All others climbing right turn to 4500 direct PRB. **Rwy 13**, climb to 3000 via heading 160° to intercept PRB R-133 outbound. V25 southbound continue climb on course. All others climbing right turn to 4500 direct PRB. **Rwy 19**, climb to 3000 via heading 150° to intercept PRB R-179 outbound. V113 southbound continue climb on course. All others climbing left turn to 4500 direct PRB. **Rwy 31**, climb to 3000 via heading 340° to intercept PRB R-326 outbound. V248 northbound climb on course. All others climbing right turn to 4500 direct PRB.

01 MAR 2018 to 29 MAR 2018

01 MAR 2018 to 29 MAR 2018



## TAKEOFF MINIMUMS, (OBSTACLE) DEPARTURE PROCEDURES, AND



18032

## DIVERSE VECTOR AREA (RADAR VECTORS)

SW-3



## TAKEOFF MINIMUMS, (OBSTACLE) DEPARTURE PROCEDURES, AND



18032

## DIVERSE VECTOR AREA (RADAR VECTORS)

POINT MUGU NAS (NAVAL BASE  
VENTURA CO) (KNTD), CATAKEOFF MINIMUMS AND (OBSTACLE)  
DEPARTURE PROCEDURES  
17117

DEPARTURE PROCEDURE: **Rwy 3**, diverse departures authorized 220° to 270° CW. Right turns on departure NA. Turn left to assigned heading within 3 DME of NTD TACAN. Do not exceed 300 KIAS until established on assigned heading. **Rwy 9**, diverse departures NA. **Rwy 21**, diverse departures authorized 140° to 290°. **Rwy 27**, diverse departures authorized 140° to 290° CW. Right turns on departure NA. Turn left to assigned heading. Do not exceed 310 KIAS until established on assigned heading. **CAUTION:** Mountainous terrain NW thru SE.

TAKEOFF OBSTACLE NOTES: **Rwy 3**, trees 2920' from DER, 1197' left of cntrln, 90' MSL. Terrain 0' from DER, 500' right of cntrln, 14' MSL. Terrain 0' from DER, 500' left of cntrln, 14' MSL. Tower 3005' from DER, 1235' left of cntrln, 90' MSL. **Rwy 21**, none. **Rwy 27**, DASR antenna 960' from DER, 985' right of cntrln, 56' AGL/66' MSL. Terrain 0' from DER, 500' right of cntrln, 11' MSL. Pole 1319' from DER, 584' right of cntrln, 44' MSL.

## RAMONA, CA

## RAMONA (RNM)

TAKEOFF MINIMUMS AND (OBSTACLE)  
DEPARTURE PROCEDURES  
AMDT 3A 13206 (FAA)

TAKEOFF MINIMUMS: **Rwy 9**, std. w/ min. climb of 500' per NM to 4000, or 3800-3 for climb in visual conditions. **Rwy 27**, std. w/ min. climb of 332' per NM to 2600, or 3800-3 for climb in visual conditions.

DEPARTURE PROCEDURE: **Rwy 9**, climb via heading 088° to 4000, then climbing left turn via heading 330° and JLI VORTAC R-263/OCN VORTAC R-083 to ROBNN INT before proceeding on course, or for climb in visual conditions, cross Ramona airport at or above 5000 before proceeding on course. When executing VCOA, notify ATC prior to departure. **Rwy 27**, climb via heading 268° to 2600, then climbing right turn via PGY VORTAC R-336 to ROBNN INT before proceeding on course, or for climb in visual conditions, cross Ramona airport at or above 5000 before proceeding on course. When executing VCOA, notify ATC prior to departure.

TAKEOFF OBSTACLE NOTES: **Rwy 9**, sign 23' from DER, 178' left of centerline, 9' AGL/1399' MSL. Tree 94' from DER, 343' right of centerline, 20' AGL/1403' MSL. Trees beginning 2468' from DER, 180' right of centerline, up to 100' AGL/1539' MSL. Trees beginning 2637' from DER, 305' left of centerline, up to 100' AGL/1487' MSL. **Rwy 27**, tree 657' from DER, 12' left of centerline, 100' AGL/1499' MSL. Trees 1.85 NM from DER, 92' left of centerline, up to 100' AGL/1719' MSL.

## REDLANDS, CA

## REDLANDS MUNI (REI)

TAKEOFF MINIMUMS AND (OBSTACLE)  
DEPARTURE PROCEDURES  
ORIG-A 13122 (FAA)

TAKEOFF MINIMUMS: **Rwy 8**, NA. **Rwy 26**, 1700-2 or std. with a min. climb of 300' per NM to 4000.

DEPARTURE PROCEDURE: Climbing left turn direct PDZ VORTAC. Aircraft departing PDZ VORTAC R-091 CW R-140 and R-231 CW R-280 climb on course. All others continue in PDZ VORTAC holding pattern (hold NE, right turns, 210° inbound) to cross PDZ VORTAC at or above, R-281 CW R-090, 7700; R-141 CW R-230, 4900.

TAKEOFF OBSTACLE NOTES: **Rwy 26**, trees beginning 17' from DER, 82' left of centerline, up to 34' AGL/1506' MSL.

## RIVERSIDE, CA

## RIVERSIDE MUNI (RAL)

TAKEOFF MINIMUMS AND (OBSTACLE)  
DEPARTURE PROCEDURES  
AMDT 10 12264 (FAA)

TAKEOFF MINIMUMS: **Rwy 16**, NA- terrain. **Rwy 9**, std. w/min. climb of 300' per NM to 5500. **Rwy 27**, std. w/min. climb of 310' per NM to 6800. **Rwy 34**, std. w/min. climb of 488' per NM to 3900.

DEPARTURE PROCEDURE: **Rwy 9**, climb heading 089° to 1700 then climbing right turn heading 210° to intercept PDZ VORTAC R-093 to PDZ VORTAC, thence ...

**Rwy 27**, climb heading 269° to 2200 then climbing left turn direct PDZ VORTAC, thence ...

**Rwy 34**, climb heading 344° to 1800 then climbing left turn heading 230° to intercept PDZ VORTAC R-352 to PDZ VORTAC, thence ...

... Aircraft departing PDZ VORTAC R-091 CW R-140 and R-231 CW R-280 climb on course. All others climb in holding pattern (hold NE, right turns, 210° inbound) to cross PDZ VORTAC at or above; R-321 CW R-340 7800; All others 7200 or airway MEA.

TAKEOFF OBSTACLE NOTES: **Rwy 9**, multiple trees and terrain beginning at DER, 499' left of centerline, up to 40' AGL/856' MSL. Fence 78' from DER, 497' left of centerline, 6' AGL/ 826' MSL. Trees beginning 605' from DER, 591' right of centerline, up to 40' AGL/867' MSL. Trees, bushes and terrain beginning 947' from DER, 535' left of centerline, up to 40' AGL/866' MSL. **Rwy 27**, multiple trees and poles beginning 602' from DER, left and right of centerline, up to 40' AGL/790' MSL. **Rwy 34**, vent on building, 30' from DER, 307' right of centerline, 20' AGL/800' MSL. Obstruction light on lighted wind sock, 62' from DER, 347' right of centerline, 31' AGL/811' MSL. Obstruction light on building, 63' from DER, 350' left of centerline, 37' AGL/796' MSL. Trees, terrain, obstruction light on pole and obstruction light on lighted pole beginning 193' from DER, 202' right of centerline, up to 49' AGL/854' MSL. Trees and light on pole beginning 300' from DER, 203' left of centerline, up to 55' AGL/814' MSL. Vent on building 1214' from DER, 377' left of centerline, 73' AGL/832' MSL. Pole, 1915' from DER, 135' left of centerline, 55' AGL/834' MSL. Terrain, trees, building and antenna on tank, beginning 1.49 NM from DER, 250' right and left of centerline, up to 50' AGL/1369' MSL.

01 MAR 2018 to 29 MAR 2018

01 MAR 2018 to 29 MAR 2018



## TAKEOFF MINIMUMS, (OBSTACLE) DEPARTURE PROCEDURES, AND



18032

## DIVERSE VECTOR AREA (RADAR VECTORS)

SW-3

# TAKEOFF MINIMUMS, (OBSTACLE) DEPARTURE PROCEDURES, AND DIVERSE VECTOR AREA (RADAR VECTORS)

## RIVERSIDE/RUBIDOUX, CA

FLABOB (RIR)

TAKEOFF MINIMUMS AND (OBSTACLE)  
DEPARTURE PROCEDURES

ORIG 11181 (FAA)

TAKEOFF MINIMUMS: **Rwy 6**, std. w/min. climb of 670' per NM to 4000 or 400-2 w/min. climb of 480' per NM to 4000 or 2100-3 for climb in visual conditions. **Rwy 24**, std. w/min. climb of 630' per NM to 3000 or 800-2½ w/min. climb of 305' per NM to 4600 or 2100-3 for climb in visual conditions.

DEPARTURE PROCEDURE: **Rwy 6**, climb via heading 064° to 4000 then right turn direct PDZ VORTAC, or for climb in visual conditions cross Flabob Airport Southwest bound at or above 2700 then via PDZ R-039 to PDZ VORTAC. **Rwy 24**, climb via heading 244° and PDZ R-031 to PDZ VORTAC, or for climb in visual conditions cross Flabob airport Southwest bound at or above 2700 then via PDZ R-039 to PDZ VORTAC.

All aircraft climb in PDZ VORTAC holding pattern (hold East, right turns, 258° inbound) to cross PDZ VORTAC at or above MEA for direction of flight before proceeding on course.

TAKEOFF OBSTACLE NOTES: **Rwy 6**, trees beginning 3763' from DER, 1152' right of centerline, up to 40' AGL/1119' MSL. **Rwy 24**, antenna on tank 6193' from DER, 2057' right of centerline, 38' AGL/1237' MSL. Trees beginning 2494' from DER, 434' right of centerline, up to 40' AGL/1519' MSL. Pole 6261' from DER, 1950' right of centerline, 30' AGL/1230' MSL. Building 1.52 NM from DER, 1154' right of centerline, up to 29' AGL/1369' MSL. Antenna on tank 1.26 NM from DER, 2047' right of centerline, 54' AGL/1254' MSL. Tank 4043' from DER, 794' right of centerline, 66' AGL/961' MSL. Tree 1.79 NM from DER, 434' right of centerline, 58' AGL/1138' MSL.

## SALINAS, CA

SALINAS MUNI (SNS)

DIVERSE VECTOR AREA (RADAR  
VECTORS)

ORIG 15064 (FAA)

**Rwy 8**, heading as assigned by ATC; requires minimum climb of 330' per NM to 5000. **Rwy 13**, heading as assigned by ATC; requires minimum climb of 330' per NM to 5000. **Rwy 26**, heading as assigned by ATC. **Rwy 31**, heading as assigned by ATC.

## SAN BERNARDINO, CA

SAN BERNARDINO INTL (SBD)

TAKEOFF MINIMUMS AND (OBSTACLE)  
DEPARTURE PROCEDURES

ORIG 93343 (FAA)

TAKEOFF MINIMUMS: **Rwy 6**, CAT A,B 2100-2 or std. with a min. climb of 340' per NM to 3700. CAT C,D 3100-2 or std. with a min. climb of 480' per NM to 4600.

DEPARTURE PROCEDURE: **Rwy 6**, climbing right turn. **Rwy 24**, climbing left turn. All aircraft climb direct PDZ VORTAC. Aircraft departing PDZ R-091 CW R-140 and R-231 CW R-280 climb on course. All others continue climb in PDZ holding pattern (Hold NE, right turns, 210° inbound) to cross PDZ VORTAC at or above: R-281 CW R-090, 7700; R-141 CW R-230, 4900.

## SAN CLEMENTE ISLAND NALF (FREDERICK SHERMAN FLD)(KNUC)

SAN CLEMENTE ISLAND, CA

TAKEOFF MINIMUMS AND (OBSTACLE) DEPARTURE  
PROCEDURES

15288

**Rwy 6**: Diverse departures authorized 092° to 235° CCW.

**Rwy 24**: Diverse departures authorized 162° to 055° CW.

TAKEOFF OBSTACLE NOTES: **Rwy 6**, pylon 199' MSL, 45' from DER, 272' left of centerline. Terrain 199' MSL, 958' from DER, 613' right of centerline.

## SAN DIEGO, CA

BROWN FIELD MUNI (SDM)

TAKEOFF MINIMUMS AND (OBSTACLE) DEPARTURE  
PROCEDURES

AMDT 4 10154(FAA)

TAKEOFF MINIMUMS: **Rwy 8L**, std. w/ min. climb of 570' per NM to 3100. **Rwys 8R,26L**, NA - ATC.

DEPARTURE PROCEDURE: **Rwy 8L**, climbing left turn, thence...**Rwy 26R**, climbing right turn, thence...

...via heading 280° to intercept MZB R-160 to MZB VORTAC.

TAKEOFF OBSTACLE NOTES: **Rwy 26R**, tree 1284' from DER, 778' left of centerline, 52' AGL/561' MSL.

## MONTGOMERY-GIBBS EXECUTIVE (MYF)

TAKEOFF MINIMUMS AND (OBSTACLE) DEPARTURE  
PROCEDURES

AMDT 4 17313

TAKEOFF MINIMUMS: **Rwy 5**, std. w/min. climb of 350' per NM to 2300.

DEPARTURE PROCEDURE: **Rwys 5, 10L, 10R**, climbing right turn. **Rwys 28R, 28L**, climbing left turn. All aircraft, climb direct to MZB VORTAC. Aircraft departing MZB R-090 CW R-360 climb on course. All others climb in MZB holding pattern (hold W, right turns, 075° inbound) to cross MZB VORTAC at or above 2300.

TAKEOFF OBSTACLE NOTES: **Rwy 5**, tree 467' from DER, 300' left of centerline, 461' MSL. Tree 1287' from DER, 103' right of centerline, 474' MSL. Tree 2547' from DER, 327' left of centerline, 508' MSL. Tree and building beginning 2590' from DER, 158' left of centerline, up to 524' MSL. **Rwy 23**, tree 1593' from DER, 82' right of centerline, 467' MSL. Flagpole beginning 1861' from DER, 819' right of centerline, up to 472' MSL. Transmission tower beginning 2618' from DER, 413' left of centerline, up to 102' AGL/529' MSL. Transmission tower beginning 2787' from DER, 167' right of centerline, up to 106' AGL/535' MSL. Transmission tower beginning 2996' from DER, 846' right of centerline, 114' AGL/548' MSL. **Rwy 10L**, tree 230' from DER, 494' left of centerline, 439' MSL. Tree 989' from DER, 671' left of centerline, 470' MSL. Trees beginning 1172' from DER, 591' right of centerline, up to 488' MSL. Trees beginning 1628' from DER, 681' left of centerline, up to 486' MSL. **Rwy 10R**, rod on electric equipment beginning 39' from DER, 66' left of centerline, up to 6' AGL/426' MSL. Tree 2106' from DER, 319' right of centerline, 478' MSL. Tree 2347' from DER, 199' right of centerline, 488' MSL. **Rwy 28L**, bush 35' from DER, 338' right of centerline, 415' MSL. Trees beginning 1007' from DER, 6' left of centerline, up to 451' MSL. Pole beginning 1223' from DER, 598' right of centerline, up to 43' AGL/451' MSL. **Rwy 28R**, bush 33' from DER, 161' left of centerline, 415' MSL. Sign beginning 792' from DER, 324' right of centerline, up to 439' MSL. Tree and pole beginning 863' from DER, 98' right of centerline, up to 469' MSL. Tree 1006' from DER, 506' left of centerline, 451' MSL. Sign 1324' from DER, 652' right of centerline, 68' AGL/488' MSL.

01 MAR 2018 to 29 MAR 2018

01 MAR 2018 to 29 MAR 2018

# TAKEOFF MINIMUMS, (OBSTACLE) DEPARTURE PROCEDURES, AND DIVERSE VECTOR AREA (RADAR VECTORS)



## TAKEOFF MINIMUMS, (OBSTACLE) DEPARTURE PROCEDURES, AND



18032

## DIVERSE VECTOR AREA (RADAR VECTORS)

## SAN DIEGO, CA (CON'T)

## SAN DIEGO INTL (SAN)

TAKEOFF MINIMUMS AND (OBSTACLE)  
DEPARTURE PROCEDURES

AMDT 9 16315 (FAA)

TAKEOFF MINIMUMS: **Rwy 9**, 400-1¼ w/min. climb of 290' per NM to 900. **Rwy 27**, 400-2½ or std. w/min. climb of 353' per NM to 500.DEPARTURE PROCEDURE: **Rwy 9**, climb heading 095° to 900, then climbing left turn direct MZB VORTAC. Thence ...**Rwy 27**, climb heading 275° to 900, then climbing right turn direct MZB VORTAC. Thence ...

...Aircraft departing MZB VORTAC R-180 CW R-360 climb on course. All others climb in MZB VORTAC holding pattern (hold West, right turn, 075° inbound) to cross MZB VORTAC at or above 2300 before proceeding on course.

TAKEOFF OBSTACLE NOTES: **Rwy 9**, fence, terrain, beginning 14' from DER, 67' left of centerline, up to 14' AGL/35' MSL. Pole, building, terrain, fence, beginning 21' from DER, 8' right of centerline, up to 35' AGL/50' MSL. Sign, terrain, beginning 268' from DER, 137' left of centerline, up to 50' AGL/77' MSL. Tree, building, beginning 781' from DER, 265' right of centerline, up to 91' MSL. Building, terrain, beginning 877' from DER, 180' left of centerline, up to 66' AGL/106' MSL. building 1385' from DER, 356' right of centerline, 55' AGL/95' MSL. Electric sys, terrain, beginning 1395' from DER, 319' left of centerline, up to 44' AGL/138' MSL. Tree, terrain, beginning 1822' from DER, 561' left of centerline, up to 196' MSL. Tree 1857' from DER, 45' right of centerline, 45' AGL/144' MSL. Tree, terrain, building, beginning 2140' from DER, 119' left of centerline, up to 198' MSL. Building, terrain, beginning 2596' from DER, 101' right of centerline, up to 89' AGL/158' MSL. Trees, terrain, beginning 2681' from DER, 190' left of centerline, up to 215' MSL. T-I tower, terrain, building, pole, tree, beginning 2948' from DER, 40' left of centerline, up to 67' AGL/272' MSL. Tree, terrain, building, beginning 2965' from DER, 30' right of centerline, up to 211' MSL. Building, terrain, beginning 3857' from DER, 39' right of centerline, up to 44' AGL/216' MSL. Building 4376' from DER, 1295' left of centerline, 117' AGL/364' MSL. Building, terrain, beginning 4410' from DER, 322' left of centerline, up to 128' AGL/389' MSL. Building, beginning 4433' from DER, 1207' right of centerline, up to 165' AGL/296' MSL. Ant on ol building 4460' from DER, 1482' left of centerline, 403' MSL. Terrain, Building, tree, pole, beginning 4510' from DER, 213' left of centerline, up to 132' MSL. Tree, building, beginning 5159' from DER, 325' right of centerline, up to 113' AGL/301' MSL. Building 6023' from DER, 1934' right of centerline, 224' AGL/370' MSL. Building 1 NM from DER, 1543' right of centerline, 234' AGL/372' MSL. Building, tree, beginning 1 NM from DER, 21' right of centerline, up to 287' AGL/401' MSL. Monument 1.3 nm from DER, 1339' left of centerline, 53' AGL/310' MSL. Pole 1.3 NM from DER, 1721' left of centerline, 35' AGL/306' MSL. Stack, tree, beginning 1.4 NM from DER, 501' left of centerline, up to 170' AGL/374' MSL. Tree 1.9 NM from DER, 490' left of centerline, 330' MSL. **Rwy 27**, pole 192' from DER, 347' right of centerline, 17' AGL/29' MSL. NAVIAID 284' from DER, 317' left of centerline, 19' AGL/28' MSL. Tree 754' from DER, 156' right of centerline, 24' AGL/34' MSL. Tree 1021' from DER, 620' right of centerline, 71' MSL. Pole 2515' from DER, 707' left of centerline, 103' AGL/118' MSL. Tree 2594' from DER, 353' right of centerline, 90' AGL/107' MSL. Tree 3179' from DER, 410' right of centerline, 111' MSL. Tree 3494' from DER, 947' right of centerline, 169' MSL. Tower 3675' from DER, 14' right of centerline, 60' AGL/115' MSL. Tree 4248' from DER, 403' left of centerline, 75' AGL/150' MSL. Tree 4441' from DER, 1199' right of centerline, 111' AGL/199' MSL. Trees, beginning 5046' from DER, 7' left of centerline, up to 96' AGL/235' MSL. Tree, building, beginning 5693' from DER, 272' right of centerline, up to 227' MSL. Tree 6050' from DER, 1703' left of centerline, 256' MSL. Trees, beginning 1 NM from DER, 532' left of centerline, up to 65' AGL/261' MSL. Building lt, tree, beginning 1 NM from DER, 257' right of centerline, up to 40' AGL/238' MSL. Tree 1.9 NM from DER, 3367' left of centerline, 65' AGL/328' MSL.

## SAN DIEGO, CA (CON'T)

## SAN DIEGO INTL (SAN) (CON'T)

DIVERSE VECTOR AREA (RADAR  
VECTORS)

AMDT 1 15232 (FAA)

**Rwy 27**, headings as assigned by ATC;  
requires minimum climb of 360' per NM to 800.

## SAN DIEGO/EL CAJON, CA

## GILLESPIE FIELD (SEE)

TAKEOFF MINIMUMS AND (OBSTACLE)  
DEPARTURE PROCEDURES

AMDT 6 17341 (FAA)

DEPARTURE PROCEDURE: Use MISSION BAY  
departure.DIVERSE VECTOR AREA (RADAR  
VECTORS)

ORIG 14289 (FAA)

**Rwy 17L**, heading as assigned by ATC;  
requires minimum climb of 320' per NM to 1200.**Rwy 27R**, heading as assigned by ATC;  
requires minimum climb of 420' per NM to 1200.**Rwy 35**, heading as assigned by ATC;  
requires minimum climb of 400' per NM to 1600.

## SAN LUIS OBISPO, CA

## SAN LUIS COUNTY RGNL(SBP)

TAKEOFF MINIMUMS AND (OBSTACLE)  
DEPARTURE PROCEDURES

AMDT 6 92289 (FAA)

TAKEOFF MINIMUMS: **Rwys 7, 25, NA. Rwy 11**,  
1800-2 or std. with a min. climb of 320' per NM to  
2300. **Rwy 29**, 1200-2 or std. with a min. climb of  
390' per NM to 1700.DEPARTURE PROCEDURE: **Rwy 11**, climb  
runway heading to 900, then climbing right turn  
direct MQO VORTAC. **Rwy 29**, climb via runway  
heading and MQO R-050 to MQO VORTAC. **All**  
**aircraft** departing on MQO R-130 CW R-320  
climb on course. All others continue climbing in  
MQO holding pattern (SE, left turns, 306°  
inbound) to cross MQO VORTAC at or above  
4000.

## SAN NICOLAS ISLAND NOLF (KNSI)

## SAN NICOLAS ISLAND, CA

TAKEOFF MINIMUMS AND (OBSTACLE)  
DEPARTURE PROCEDURES

15288

DEPARTURE PROCEDURE:

**Rwy 12**: Diverse departures authorized 301° to  
121° CW.**Rwy 30**: Diverse departures authorized 301° to  
121° CW.TAKEOFF OBSTACLE NOTES: **Rwy 12**, terrain  
63' from DER, 517' right of centerline, 504' MSL.  
Terrain 50' from DER, 500' right of centerline,  
503' MSL. **Rwy 30**, localizer antenna 51' from  
DER, 3' right of centerline, 8' AGL/491' MSL.

## TAKEOFF MINIMUMS, (OBSTACLE) DEPARTURE PROCEDURES, AND



18032

## DIVERSE VECTOR AREA (RADAR VECTORS)

SW-3



**TAKEOFF MINIMUMS, (OBSTACLE) DEPARTURE PROCEDURES, AND**

18032

**DIVERSE VECTOR AREA (RADAR VECTORS)****SANTA ANA, CA**JOHN WAYNE AIRPORT-ORANGE  
COUNTY (SNA)TAKEOFF MINIMUMS AND (OBSTACLE)  
DEPARTURE PROCEDURES

AMDT 6 14261 (FAA)

DEPARTURE PROCEDURE: **Rwys 2L, 2R**, climbing left turn direct SLI VORTAC. **Rwys 20L, 20R**, climbing right turn direct SLI VORTAC. **All aircraft** climb in SLI holding pattern (hold S, left turns, 351° inbound) to cross SLI VORTAC at or above MEA for direction of flight before proceeding on course.

TAKEOFF OBSTACLE NOTES: **Rwy 2L**, pole and trees beginning 94' from DER, 490' left of centerline, up to 26' AGL/63' MSL. Navaid 497' from DER, 625' right of centerline, 19' AGL/55' MSL. Trees beginning 970' from DER, 608' left of centerline, up to 90' AGL/127' MSL.

**Rwy 2R**, navaid 497' from DER, 125' right of centerline, 19' AGL/55' MSL. Pole 1104' from DER, 307' right of centerline, 33' AGL/68' MSL. Building 1681' from DER, 671' right of centerline, 49' AGL/87' MSL. Tree 1745' from DER, 309' right of centerline, 52' AGL/85' MSL. **Rwy 20R**, pole and trees beginning 204' from DER, 490' right of centerline, up to 38' AGL/91' MSL. Wsk on hangar 536' from DER, 605' left of centerline, 40' AGL/92' MSL. Poles and trees beginning 808' from DER, 489' right of centerline, up to 58' AGL/108' MSL. Tree 1574' from DER, 765' left of centerline, 60' AGL/113' MSL.

**DIVERSE VECTOR AREA (RADAR VECTORS)**

AMDT 1 14289 (FAA)

**Rwys 2L, 2R**, headings as assigned by ATC. **Rwy 20L**, headings as assigned by ATC; requires minimum climb of 260' per NM to 1300. **Rwy 20R**, headings as assigned by ATC; requires minimum climb of 270' per NM to 1300.

**SANTA BARBARA, CA**

SANTA BARBARA MUNI (SBA)

TAKEOFF MINIMUMS AND (OBSTACLE)  
DEPARTURE PROCEDURES

AMDT 8 16343 (FAA)

TAKEOFF MINIMUMS: **Rwy 7**, std. w/min. climb of 260' per NM to 1100, or 2800-3 for climb in visual conditions. **Rwys 33L/R**, NA-ATC.

DEPARTURE PROCEDURE: **Rwy 7**, climbing right turn heading 170°, thence ... **Rwy 25**, climbing left turn heading 155°, thence ... **Rwy 15L/R**, climb heading 152°, thence ...

... On RZS R-185 to GOLET INT, climb in GOLET INT holding pattern (se, right turns, 307 inbound), to cross GOLET INT at or above MEA/MCA for route of flight, before proceeding on course.

VCOA: **Rwy 7**, obtain ATC approval for VCOA when requesting IFR clearance. Climb in visual conditions to cross Santa Barbara Muni airport southbound at or above 2700 thence... On RZS R-185 to GOLET INT, climb in GOLET INT holding pattern (se, right turns, 307 inbound), to cross GOLET INT at or above MEA/MCA for route of flight, before proceeding on course.

**SANTA BARBARA, CA (CON'T)**

SANTA BARBARA MUNI (SBA) (CON'T)

TAKEOFF OBSTACLE NOTES: **Rwy 7**, vehicles on parking lot 88' from DER, 516' right of centerline, 25' MSL. Pole 208' from DER, 243' left of centerline, 25' AGL/36' MSL. Vehicles on parking lot beginning 255' from DER, 518' right of centerline, up to 26' MSL. Poles and a tree beginning 715' from DER, 579' right of centerline, up to 47' MSL. Trees beginning 1099' from DER, 631' left of centerline, up to 45' MSL. Tree, bldg, tank, and a pole beginning 1225' from DER, 566' left of centerline, up to 52' MSL. Poles beginning 1229' from DER, 569' right of centerline, up to 53' MSL. Tree 1474' from DER, 752' right of centerline, 57' MSL. Trees beginning 1606' from DER, 472' left of centerline, up to 57' MSL. Trees beginning 1671' from DER, 365' right of centerline, up to 75' MSL. Trees beginning 1686' from DER, 234' left of centerline, up to 65' MSL. Tree 2628' from DER, 421' right of centerline, 79' MSL. Trees beginning 2829' from DER, 594' left of centerline, up to 103' MSL. Tree 2918' from DER, 152' right of centerline, 78' AGL/91' MSL. Tree 3525' from DER, 838' left of centerline, 111' MSL. Tree 4902' from DER, 1793' left of centerline, 145' MSL. **Rwy 15L**, bushes beginning 19' from DER, 18' right of centerline, up to 6' AGL/17' MSL. Bushes and a sign beginning 26' from DER, 82' left of centerline, up to 17' MSL. Buildings beginning 38' from DER, 446' left of centerline, up to 25' MSL. Trees, vehicles on parking lots, a fence, and vehicle on road beginning 146' from DER, 345' left of centerline, up to 18' AGL/29' MSL. Vehicle on road beginning 905' from DER, 640' left of centerline, up to 44' MSL. Poles and trees beginning 989' from DER, 146' left of centerline, up to 54' MSL. Sign, overpass, pole, trees, and vehicle on road beginning 1280' from DER, 345' right of centerline, up to 94' MSL. **Rwy 15R**, bushes beginning 18' from DER, 33' right of centerline, up to 8' AGL/15' MSL. Bushes and a sign beginning 25' from DER, 240' left of centerline, up to 6' AGL/17' MSL. Bush 993' from DER, 758' right of centerline, 61' MSL. Trees, fence, pole, sign, building, overpass, and vehicle on road beginning 1099' from DER, 26' right of centerline, up to 91' AGL/145' MSL. Trees beginning 1355' from DER, 16' left of centerline, up to 25' AGL/55' MSL. Trees and a bush beginning 1676' from DER, 728' right of centerline, up to 97' AGL/147' MSL. **Rwy 25**, NAVAIID 2' from DER, 253' left of centerline, 13' MSL. Tree 13' from DER, 486' left of centerline, 12' AGL/21' MSL. Vehicle on road, 489' from DER, 593' right of centerline, 27' MSL. Trees beginning 1612' from DER, 799' left of centerline, up to 65' MSL. Trees beginning 2299' from DER, 312' left of centerline, up to 61' AGL/88' MSL. Tree and a pole beginning 2487' from DER, 128' right of centerline, up to 100' MSL. Trees beginning 3141' from DER, 183' right of centerline, up to 110' MSL.

**DIVERSE VECTOR AREA (RADAR VECTORS)**

AMDT 1 16147 (FAA)

**Rwy 7**, heading as assigned by ATC; requires minimum climb of 270' per NM to 1100. **Rwy 15L/R**, heading as assigned by ATC. **Rwy 25**, heading as assigned by ATC; requires minimum climb of 500' per NM to 4600.

01 MAR 2018 to 29 MAR 2018

01 MAR 2018 to 29 MAR 2018

**TAKEOFF MINIMUMS, (OBSTACLE) DEPARTURE PROCEDURES, AND**

18032

**DIVERSE VECTOR AREA (RADAR VECTORS)**

SW-3



## TAKEOFF MINIMUMS, (OBSTACLE) DEPARTURE PROCEDURES, AND



18032

## DIVERSE VECTOR AREA (RADAR VECTORS)

## SANTA MARIA, CA

SANTA MARIA PUB/CAPT G ALLAN  
HANCOCK FLD (SMX)

TAKEOFF MINIMUMS AND (OBSTACLE)  
DEPARTURE PROCEDURES

AMDT 6 12124 (FAA)

TAKEOFF MINIMUMS: **Rwy 20**, NA-obstacles. **Rwy 12**, 400-2¼ w/min. climb of 287' per NM to 1500 or std. w/ min. climb of 388' per NM to 1200.

DEPARTURE PROCEDURE: **Rwy 2**, climbing left turn; **Rwy 12**, climbing left turn (do not exceed 230 KIAS until established northwest bound to GLJ VOR). **Rwy 30**, climb heading 294°.

All aircraft: climb direct GLJ VOR, then continue climb to airway MEA via GLJ R-300 to intercept MQO R-137 to MQO VORTAC. Cross MQO VORTAC at or above MEA/MCA for assigned route of flight.

TAKEOFF OBSTACLE NOTES: **Rwy 2**, trees beginning 541' from DER, 153' right of centerline, up to 108' AGL/332' MSL. Tree 1018' from DER, 246' left of centerline, 34' AGL/254' MSL. **Rwy 12**, trees beginning 988' from DER, 271' right of centerline, up to 83' AGL/402' MSL. Trees beginning 54' from DER, 277' left of centerline, up to 84' AGL/409' MSL.

## SANTA MONICA, CA

SANTA MONICA MUNI (SMO)

TAKEOFF MINIMUMS AND (OBSTACLE)  
DEPARTURE PROCEDURES

AMDT 7 17061 (FAA)

TAKEOFF MINIMUMS: Use TOPANGA DEPARTURE.

DIVERSE VECTOR AREA (RADAR VECTORS)

AMDT 2 18032 (FAA)

**Rwy 3**, heading as assigned by ATC; requires min. climb of 320' per NM to 1100. **Rwy 21**, heading as assigned by ATC; requires min. climb of 350' per NM to 3900.

## SANTA YNEZ, CA

SANTA YNEZ (IZA)

TAKEOFF MINIMUMS AND (OBSTACLE)  
DEPARTURE PROCEDURES

AMDT 2 16035 (FAA)

TAKEOFF MINIMUMS: **Rwy 8**, 500-2¼ w/min. climb of 251' per NM to 1700 or std. w/min. climb of 317' per NM to 1300. **Rwy 26**, 300-2 or std. w/min. climb of 226' per NM to 1100.

DEPARTURE PROCEDURE: **Rwy 8**, climbing left turn heading 260° to 6000, intercept GVO VORTAC R-307 to ORCUT INT/MQO 30.00 DME. Do not exceed 150 KIAS until established on GVO VORTAC R-307. **Rwy 26**, climb heading 264° to 6000, intercept GVO VORTAC R-307 to ORCUT INT/MQO 30.00 DME.

TAKEOFF OBSTACLE NOTES: **Rwy 8**, sign 23' from DER, 81' left of centerline, 28' AGL/675' MSL. Building 384' from DER, 240' left of centerline, 7' AGL/684' MSL. Tree 973' from DER, 592' right of centerline, 57' AGL/704' MSL. **Rwy 26**, buildings and hangars beginning 9' from DER, 330' right of centerline, up to 27' AGL/693' MSL. Tree 299' from DER, 415 right of centerline, 24' AGL/664' MSL. Fence 315' from DER, 407' left of centerline, 2' AGL/666' MSL. Building 353' from DER, 277' right of centerline, 20' AGL/684' MSL. Trees 391' from DER, 233' left of centerline, 56' AGL/696' MSL. Trees 435' from DER, 305' right of centerline, up to 58' AGL/698' MSL. Fence 749' from DER, 273' right of centerline, 7' AGL/678' MSL. Tree 859' from DER, 427' right of centerline, 54' AGL/688' MSL. Tree 1271' from DER, 296' left of centerline, 47' AGL/687' MSL.

## SHAFTER, CA

SHAFTER-MINTER FIELD (MIT)

TAKEOFF MINIMUMS AND (OBSTACLE)  
DEPARTURE PROCEDURES

AMDT 1 13122 (FAA)

DEPARTURE PROCEDURE: **Rwys 12, 17, 26**, climbing right turn heading 300° to 4000. Thence ... **Rwys 8, 30, 35**, climbing left turn heading 240° to 4000. Thence ... Westbound aircraft intercept V248 until reaching 4000, then proceed on course. Eastbound aircraft intercept V248 upon reaching 4000 turn right direct EHF VORTAC, then proceed on course.

TAKEOFF OBSTACLE NOTES: **Rwy 8**, vehicles on road beginning 41' from DER, 7' left of centerline, up to 15' AGL/442' MSL. **Rwy 12**, windsock 504' from DER, 397' left of centerline, 26' AGL/439' MSL. Trees beginning 2476' from DER, 344' left of centerline, up to 75' AGL/488' MSL. Trees beginning 862' from DER, 378' right of centerline, up to 31' AGL/441' MSL. **Rwy 17**, vehicles on road 489' from DER, left and right of centerline, 15' AGL/429' MSL. Tree 1150' from DER, 724' left of centerline, 51' AGL/463' MSL. Windsock 1340' from DER, 43' right of centerline, 46' AGL/455' MSL. **Rwy 30**, vehicles on road 146' from DER, 273' left of centerline, 10' AGL/420' MSL. **Rwy 35**, vehicles on road 461' from DER, 86' right of centerline to 386' right of centerline, 15' AGL/442' MSL.

01 MAR 2018 to 29 MAR 2018

01 MAR 2018 to 29 MAR 2018



## TAKEOFF MINIMUMS, (OBSTACLE) DEPARTURE PROCEDURES, AND



18032

## DIVERSE VECTOR AREA (RADAR VECTORS)

SW-3



## TAKEOFF MINIMUMS, (OBSTACLE) DEPARTURE PROCEDURES, AND



18032

## DIVERSE VECTOR AREA (RADAR VECTORS)

## TORRANCE, CA

## ZAMPERINI FIELD (TOA)

TAKEOFF MINIMUMS AND (OBSTACLE)

DEPARTURE PROCEDURES

AMDT 1A 10210 (FAA)

TAKEOFF MINIMUMS: **Rwy 11L**, 400-2 or std. w/ min. climb of 325' per NM to 600. **Rwy 11R**, 400-2½ or std. with a min. climb of 325' per NM to 600.

DEPARTURE PROCEDURE: **Rwys 29L, 29R**, climb runway heading. **Rwys 11L, 11R**, climbing left turn to heading 290°. Both departures climb to 3000, intercept LAX R-170 to LIMBO Int.

## TUSI AHP (KHGT),

## HUNTER LIGGETT, CA

TAKEOFF MINIMUMS AND (OBSTACLE)

DEPARTURE PROCEDURES

AMDT 3, 08269

Helicopter use only. Climb on a heading between 010° CW to 190° from heliport (or a minimum climb rate of 530' per NM to 7800 for all other courses).

## TWENTYNINE PALMS, CA

## TWENTYNINE PALMS (TNP)

TAKEOFF MINIMUMS AND (OBSTACLE)

DEPARTURE PROCEDURES

AMDT 1 00279 (FAA)

TAKEOFF MINIMUMS: **Rwy 17, NA. Rwys 8, 26, 35**, std. with a min. climb of 280' per NM to 5500.

DEPARTURE PROCEDURE: **Rwys 8, 26, 35**, turn right direct TNP VORTAC. Eastbound on V264 continue climb on course. All others climb in TNP holding pattern (E, left turns, 255° inbound) to cross TNP VORTAC at or above 6000 before proceeding on course. Northeast bound on V514-538 cross TNP VORTAC at or above 7900.

## UPLAND, CA

## CABLE (CCB)

TAKEOFF MINIMUMS AND (OBSTACLE)

DEPARTURE PROCEDURES

AMDT 3 10210 (FAA)

TAKEOFF MINIMUMS: **Rwy 6**, 300-1¼ or std. with a min. climb of 240' per NM to 1900.

DEPARTURE PROCEDURE: **Rwy 6**, climbing right turn.

**Rwy 24**, climbing left turn. All aircraft climb direct PDZ VORTAC and hold (East, right turns, 258°, inbound), continue climb-in-hold to MEA for route of flight.

TAKEOFF OBSTACLE NOTES: **Rwy 24**, sign, 45' from DER, 96' left of centerline, 8' AGL/1396' MSL. Trees beginning 250' from DER, 417' right of centerline, up to 30' AGL/1429' MSL. **Rwy 6**, trees beginning 14' from DER, 78' left of centerline, up to 30' AGL/1669' MSL. Sign 27' from DER, 98' right of centerline, 8' AGL/1448' MSL. Sign 29' from DER, 102' left of centerline, 8' AGL/1451' MSL. Pole 109' from DER, 221' right of centerline, 40' AGL/1470' MSL. Poles beginning 123' from DER, 178' left of centerline, up to 47' AGL/1491' MSL. Trees beginning 160' from DER, 15' right of centerline, up to 30' AGL/1506' MSL. Obstruction light on heading 768' from DER, 246' left of centerline, 39' AGL/1489' MSL. Tree 2785' from DER, on centerline, 30' AGL/1524' MSL.

## VAN NUYS, CA

## VAN NUYS (VNY)

TAKEOFF MINIMUMS AND (OBSTACLE)

DEPARTURE PROCEDURES

AMDT 6 16203 (FAA)

TAKEOFF MINIMUMS: **Rwys 16L/R**, std. w/ min. climb of 370' per NM to 7100. **Rwys 34L/R**, std. w/ min. climb of 370' per NM to 7100.

DEPARTURE PROCEDURE: **Rwys 16L/R**, climbing left turn on heading 053° and VNY R-095 to DARTS INT, thence ... **Rwys 34L/R** - climbing right turn on heading 143° and VNY R-095 to DARTS INT, thence ... Aircraft eastbound on V186 and southeast bound on V459 climb on course, all others climb in DARTS holding pattern (hold W, right turns, 095° inbound) to depart DARTS INT at or above 7100.

TAKEOFF OBSTACLE NOTES: **Rwy 16L**, light on hangar 713' from DER, 361' left of centerline, 27' AGL/798' MSL. **Rwy 16R**, hangar 209' from DER, 516' right of centerline, 15' AGL/755' MSL. Flagpole 570' from DER, 549' right of centerline, 21' AGL/761' MSL. Building 941' from DER, 599' left of centerline, 28' AGL/774' MSL. Trees beginning 1129' from DER, left and right of centerline, up to 81' AGL/812' MSL. **Rwy 34L**, blast fence 169' from DER, 405' left of centerline, 10' AGL/812' MSL. Obstruction light on blast fence, 241' from DER, 195' left of centerline, 17' AGL/819' MSL. Multiple trees beginning 325' from DER, 549' right of centerline, up to 91' AGL/921' MSL. Train 305' from DER, 369' right of centerline, 23' AGL/832' MSL. Building 424' from DER, 589' right of centerline, 29' AGL/831' MSL. Antenna on building 449' from DER 462' left of centerline, 15' AGL/817' MSL. Pole 1376' from DER, 779' left of centerline, 68' AGL/870' MSL. Trees beginning 828' from DER, 15' left of centerline, 78' AGL/907' MSL. **Rwy 34R**, train 305' from DER, 5' left of centerline, 23' AGL/832' MSL. Building 424' from DER, 214' right of centerline, 32' AGL/831' MSL. Trees beginning 324' from DER, left and right of centerline, up to 91' AGL/921' MSL.

DIVERSE VECTOR AREA (RADAR VECTORS)

ORIG 16203 (FAA)

**Rwy 16L**, heading as assigned by ATC; requires minimum climb of 380' per NM to 2600. **Rwy 16R**, heading as assigned by ATC; requires minimum climb of 450' per NM to 2600.

01 MAR 2018 to 29 MAR 2018

01 MAR 2018 to 29 MAR 2018



## TAKEOFF MINIMUMS, (OBSTACLE) DEPARTURE PROCEDURES, AND



18032

## DIVERSE VECTOR AREA (RADAR VECTORS)

SW-3

**TAKEOFF MINIMUMS, (OBSTACLE) DEPARTURE PROCEDURES, AND  
DIVERSE VECTOR AREA (RADAR VECTORS)**

18032

**VANDENBERG AFB (KVBG)**

LOMPOC, CA  
TAKEOFF MINIMUMS AND (OBSTACLE)  
DEPARTURE PROCEDURES  
10042

**Rwy 12:** 6500-3 or standard with a minimum climb rate of 300'/NM to 8800, cross DER at or above 35' AGL/404' MSL.

**Rwy 30:** 6400-3 or standard with a minimum climb rate of 270'/NM to 8800, cross DER at or above 35' AGL/274' MSL.

TAKEOFF OBSTACLE NOTES: **Rwy 12:** trees 40' AGL/479' MSL, 3814' from DER, 1126' right of centerline. Road with possible vehicles 10' AGL/443' MSL, 2961' from DER, 360' right of centerline. Trees 200' AGL/594' MSL, 1.3 NM from DER, 795' right of centerline. Trees 200' AGL/600' MSL, 1.1 NM from DER, 2250' right of centerline. Trees 200' AGL/604' MSL, 1.0 NM from DER, 90' right of centerline. Trees 200' AGL/600' MSL, 1.4 NM from DER, 2665' left of centerline. Trees 200' AGL/620' MSL, 6051' from DER, 2044' left of centerline. Trees 50' AGL/1375' MSL, 3.2 NM from DER, 5.0 NM left of centerline. Trees 107' AGL/546' MSL, 4548' from DER, 1479' right of centerline.

**Rwy 12/30 VCOA:** For climb in visual conditions 2000-3, remain within 6.5 NM from airport, cross Vandenberg airport at or above 2400, then proceed as filed. Maximum airspeed 250 kts.

Note: Aircrews must notify ATC prior to executing this VCOA procedure.

**VICTORVILLE, CA**

SOUTHERN CALIFORNIA LOGISTICS  
(VCV)

TAKEOFF MINIMUMS AND (OBSTACLE)  
DEPARTURE PROCEDURES  
AMDT 2 07074 (FAA)

TAKEOFF MINIMUMS: **Rwy 3**, std. w/ min. climb of 266' per NM to 3500 or 5300-3 for climb in visual conditions.

DEPARTURE PROCEDURE: **Rwy 3**, climbing left turn heading 220°, thence. . .

or for climb in visual conditions cross Southern California Logistics Airport at or above 8000 MSL before proceeding on course. **Rwys 17, 21**, climbing right turn heading 325°, thence. . .

**Rwy 35**, climbing left turn heading 220°, thence. . .

. . . All aircraft climb via VCV VOR/DME R-269 to ETHER INT. Continue climb in ETHER holding pattern (NE PMD VORTAC, left turn, 247° inbound) to MEA for direction of flight.

TAKEOFF OBSTACLE NOTES: **Rwy 3**, pole 408' from DER, 511' right of centerline, 29' AGL/2873' MSL. Terrain beginning 153' from DER, 41' right of centerline, up to 3196' MSL. Terrain beginning 17' from DER, 104' left of centerline, up to 2855' MSL. Tree 2.1 NM from DER, 3735' right of centerline, 50' AGL/3269' MSL. **Rwy 17**, sign 248' from DER, 277' left of centerline, 14' AGL/2896' MSL. Antenna on building 701' from DER, 203' left of centerline, 20' AGL/2902' MSL.

01 MAR 2018 to 29 MAR 2018

01 MAR 2018 to 29 MAR 2018

**TAKEOFF MINIMUMS, (OBSTACLE) DEPARTURE PROCEDURES, AND  
DIVERSE VECTOR AREA (RADAR VECTORS)**

18032

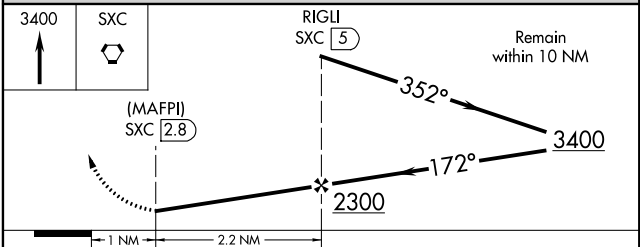
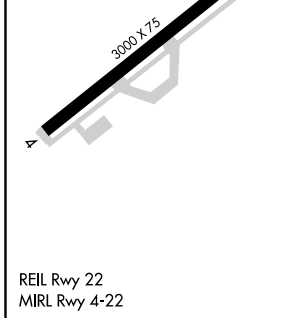
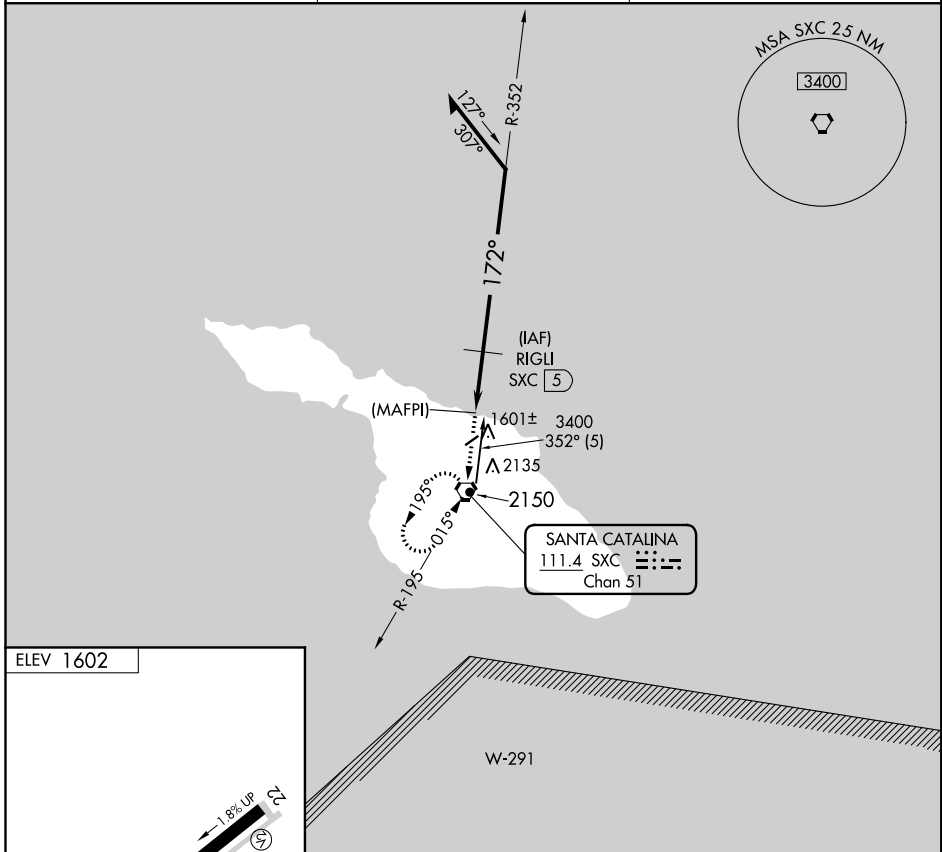
SW-3

VORTAC SXC <b>111.4</b> Chan <b>51</b>	APP CRS <b>172°</b>	Rwy Idg TDZE Apt Elev <b>N/A</b> <b>N/A</b> <b>1602</b>
--	------------------------	--

VOR/DME or GPS-B  
CATALINA (AVX)

<p><b>NA</b> Circling southeast runway 4-22 not authorized.</p>	<p>MISSED APPROACH: Climb to 3400 direct SXC VORTAC and hold.</p>
---	---

<p>ASOS <b>120.675</b></p>	<p>SOCAL APP CON <b>127.4 323.275</b></p>	<p>UNICOM <b>122.7</b> (CTAF)</p>
--------------------------------	---	---------------------------------------



CATEGORY	A	B	C	D
CIRCLING	2220-1	618 (700-1)	NA	

SW-3: 01 MAR 2018 to 29 MAR 2018

SW-3: 01 MAR 2018 to 29 MAR 2018

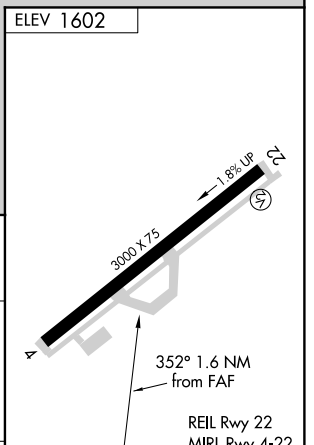
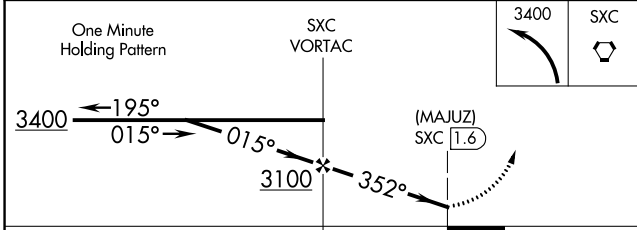
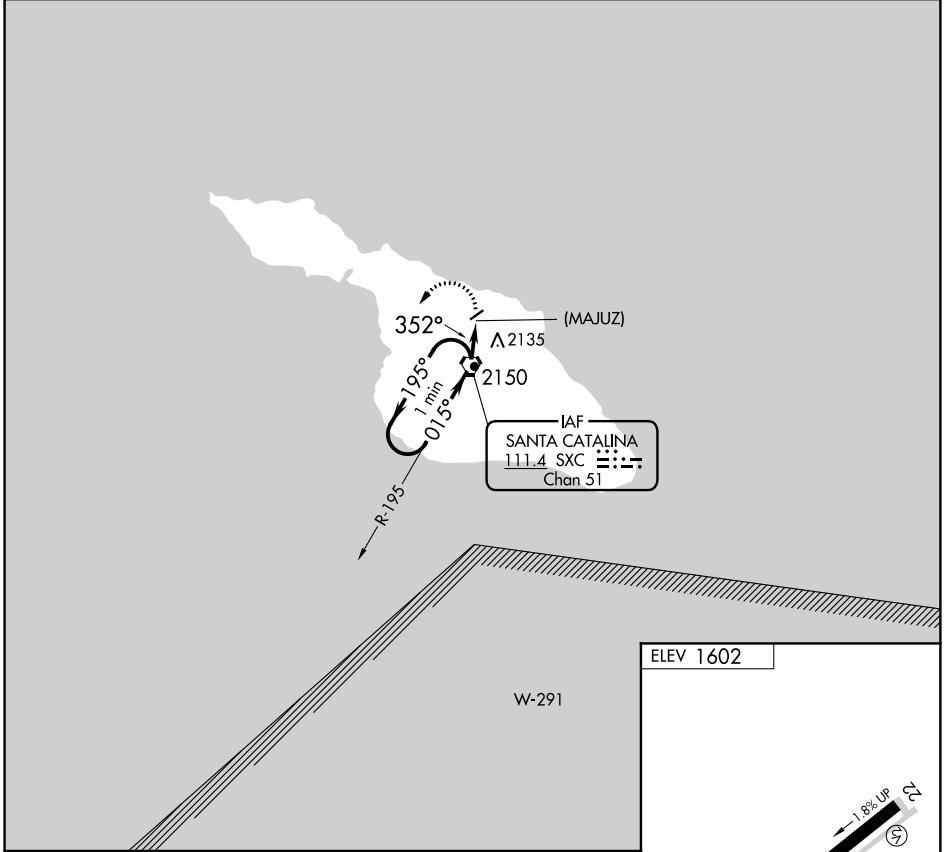
VORTAC SXC <b>111.4</b> Chan <b>51</b>	APP CRS <b>352°</b>	Rwy Idg TDZE Apt Elev	<b>N/A</b> <b>N/A</b> <b>1602</b>
--	------------------------	-----------------------------	---

# VOR or GPS-A

CATALINA (AVX)

<p><b>▽</b> NA</p>	<p>MISSED APPROACH: Climbing left turn to 3400 in SXC VORTAC holding pattern.</p>
--------------------	---

<p>ASOS <b>120.675</b></p>	<p>SOCAL APP CON <b>127.4 323.275</b></p>	<p>UNICOM <b>122.7</b> (CTAF)</p>
--------------------------------	---	---------------------------------------



CATEGORY	A	B	C	D	FAF to MAP 1.6 NM					
CIRCLING	2560-1¼ 958 (1000-1¼)	2560-1½ 958 (1000-1½)	NA		Knots	60	90	120	150	180
					Min:Sec	1:36	1:04	0:48	0:38	0:32

SW-3: 01 MAR 2018 to 29 MAR 2018

SW-3: 01 MAR 2018 to 29 MAR 2018